

Product datasheet

Recombinant Human GCLM protein ab130054

1 Image

Description

Product name	Recombinant Human GCLM protein
Purity	> 90 % SDS-PAGE. ab130054 was purified using conventional chromatography techniques.
Expression system	Escherichia coli
Accession	P48507
Protein length	Full length protein
Animal free	No
Nature	Recombinant
Species	Human
Sequence	<pre> MGSSHHHHHH SSGLVPRGSH MGSHTMGDTSR AAKALLARAR TLHLQTGNLL NWGRLRKKCP STHSEELHDC IQKTLNEWSS QINPDLVREF PDVLECTVSH AVEKINPDER EEMKVSALF MESNSSSST RSAVDMACSV LGVAQLDSVI IASPIEDGV NLSLEHLQPY WEELENLVQS KKIVAIGTSD LDKTQLEQLY QWAQVKPNSN QVNLASCCVM PPDLTAFKQ FDIQLLTHND PKELLSEASF QEALQESIPD IQAHEWVPLW LLRYSVIVKS RGIKSKGYI LQAKRRGS </pre>
Predicted molecular weight	33 kDa including tags
Amino acids	1 to 274
Tags	His tag N-Terminus

Specifications

Our [Abpromise guarantee](#) covers the use of **ab130054** in the following tested applications.

The application notes include recommended starting dilutions; optimal dilutions/concentrations should be determined by the end user.

Applications	Mass Spectrometry SDS-PAGE
Mass spectrometry	MALDI-TOF
Form	Liquid

Preparation and Storage

Stability and Storage

Shipped at 4°C. Store at +4°C short term (1-2 weeks). Upon delivery aliquot. Store at -20°C or -80°C. Avoid freeze / thaw cycle.

pH: 8.00

Constituents: 0.32% Tris HCl, 10% Glycerol, 0.88% Sodium chloride

General Info

Tissue specificity

In all tissues examined. Highest levels in skeletal muscle.

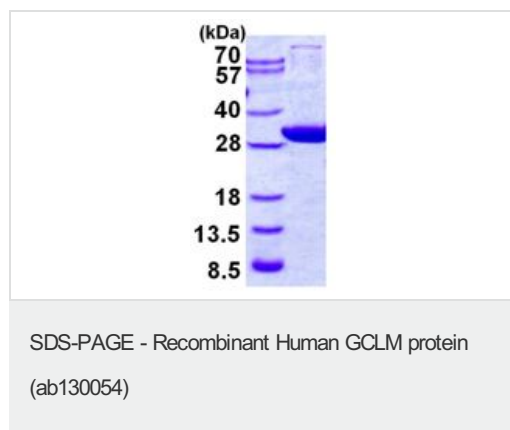
Pathway

Sulfur metabolism; glutathione biosynthesis; glutathione from L-cysteine and L-glutamate: step 1/2.

Sequence similarities

Belongs to the aldo/keto reductase family. Glutamate--cysteine ligase light chain subfamily.

Images



15% SDS-PAGE analysis of 3 µg of Human GCLM protein
(ab130054)

Please note: All products are "FOR RESEARCH USE ONLY. NOT FOR USE IN DIAGNOSTIC PROCEDURES"

Our Abpromise to you: Quality guaranteed and expert technical support

- Replacement or refund for products not performing as stated on the datasheet
- Valid for 12 months from date of delivery
- Response to your inquiry within 24 hours
- We provide support in Chinese, English, French, German, Japanese and Spanish
- Extensive multi-media technical resources to help you
- We investigate all quality concerns to ensure our products perform to the highest standards

If the product does not perform as described on this datasheet, we will offer a refund or replacement. For full details of the Abpromise, please visit <https://www.abcam.com/abpromise> or contact our technical team.

Terms and conditions

- Guarantee only valid for products bought direct from Abcam or one of our authorized distributors