

Product datasheet

Recombinant Human GCP III protein ab160758

1 Image

Description

Product name	Recombinant Human GCP III protein
Expression system	Wheat germ
Protein length	Full length protein
Animal free	No
Nature	Recombinant
Species	Human
Sequence	<p>MAESRGRLYLWMCLAAALASFLMGFMVGWFIKPLKETTT SVRYHQSIRWK LVSEMKAENIKSFLRSFTKPLPHLAGTEQNFLLAKKIQTQWK KFGLD SAKL VH YD VLLSYPNETNANYISIVDEHETEIFKTSYLEPPPDGYE NVTNIVPP YNAFSAQGMPEGDLVYVNYARTEDFFKLEREMGINCTGKI VIARYGKIFR GNKVKNAMLAGAIGIILYSDPADYFAPEVQPYPKGWNLPG TAAQRGNVLN LNGAGDPLTPGYPAKEYTFRLDVEEGVGIPRIPVHPIGYND AEILLRYSF LVGYEIKIFCTSCLFSH</p>
Amino acids	1 to 317
Tags	GST tag N-Terminus

Specifications

Our [Abpromise guarantee](#) covers the use of **ab160758** in the following tested applications.

The application notes include recommended starting dilutions; optimal dilutions/concentrations should be determined by the end user.

Applications	Western blot ELISA
Form	Liquid
Additional notes	This product was previously labelled as NAALAD2.

Preparation and Storage

Stability and Storage

Shipped on dry ice. Upon delivery aliquot and store at -80°C. Avoid freeze / thaw cycles.

pH: 8.00

Constituents: 0.31% Glutathione, 0.79% Tris HCl

General Info

Function

Has N-acetylated-alpha-linked-acidic dipeptidase (NAALADase) activity. Also exhibits a dipeptidyl-peptidase IV type activity. Inactivate the peptide neurotransmitter N-acetylaspartylglutamate.

Tissue specificity

Highest expression in the testis. Also found in ovary and spleen. Weak expression in prostate, heart and placenta. In brain, expressed in striatum, parietal cortex and ventral striatum with lower levels in hippocampus, brain stem, putamen and superior colliculus.

Sequence similarities

Belongs to the peptidase M28 family. M28B subfamily.

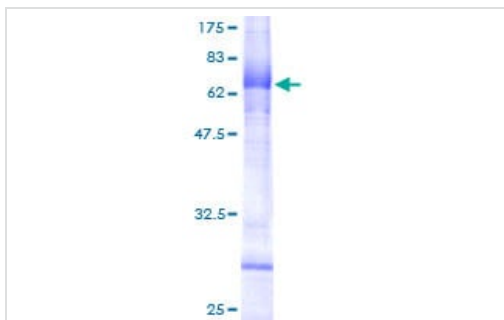
Domain

The NAALADase activity is found in the central region, the dipeptidyl peptidase IV type activity in the C-terminal.

Cellular localization

Membrane.

Images



SDS-PAGE - Recombinant Human GCP111 protein
(ab160758)

ab160758 on a 12.5% SDS-PAGE stained with Coomassie Blue.

Please note: All products are "FOR RESEARCH USE ONLY. NOT FOR USE IN DIAGNOSTIC PROCEDURES"

Our Promise to you: Quality guaranteed and expert technical support

- Replacement or refund for products not performing as stated on the datasheet
- Valid for 12 months from date of delivery
- Response to your inquiry within 24 hours
- We provide support in Chinese, English, French, German, Japanese and Spanish
- Extensive multi-media technical resources to help you
- We investigate all quality concerns to ensure our products perform to the highest standards

If the product does not perform as described on this datasheet, we will offer a refund or replacement. For full details of the Abpromise, please visit <https://www.abcam.com/abpromise> or contact our technical team.

Terms and conditions

- Guarantee only valid for products bought direct from Abcam or one of our authorized distributors