

Product datasheet

Recombinant human GDNF Receptor alpha 1/GFRA1 protein ab167761

1 Image

Description

Product name	Recombinant human GDNF Receptor alpha 1/GFRA1 protein	
Biological activity	Measured by its binding ability in a functional ELISA. Immobilized Recombinant Human GDNF at 1 µg/mL binds ab167761 with an apparent KD <10 nM.	
Purity	> 95 % SDS-PAGE. ab167761 is lyophilized from 0.22 µm filtered solution.	
Endotoxin level	< 1.000 Eu/µg	
Expression system	HEK 293 cells	
Accession	P56159-2	
Protein length	Full length protein	
Animal free	No	
Nature	Recombinant	
Species	Human	
Sequence	<p>DRLDCVKASDQCLKEQSCSTKYRTLRLRQC VAGKETNFSLA SGLEAKDECRS AMEALKQKSLYNCRCKRGMKKEKNCLRIYWSMYQSLQGN DLLEDSPYEPV NSRLSDIFRVVPFISVEHIPKGNCLDAAKACNLDDICKKY RSAYITPCT TSVSNDVCNRRKCHKALRQFFDKVPAKHSYGMLFCSCR DIACTERRRQTI VPVCSYEEREKPNCLNLQDSCKTNYICRSRLADFFTNCQP ESRSVSSCLK ENYADCLLAYSLIGTVMTPNYIDSSSLSVAPWCDCSNSG NDLEECLKFL NFFKDNTCLKNAIQAFGNGSDVTVWQPAFPVQTTTATTTT ALRVKNKPLG PAGSENIPTHVLPCCANLQAQKLKSNVSGNTHLCISNGN YEKEGLGASS HITTK</p>	
Predicted molecular weight	46 kDa including tags	
Amino acids	25 to 429	
Tags	His tag C-Terminus	

Specifications

Our [Abpromise guarantee](#) covers the use of **ab167761** in the following tested applications.

The application notes include recommended starting dilutions; optimal dilutions/concentrations should be determined by the end user.

Applications	Functional Studies SDS-PAGE ELISA
Form	Lyophilized
Additional notes	Measured by its binding ability in a functional ELISA. Immobilized Recombinant Human GDNF at 1 µg/mL binds ab167761 with an apparent KD <10 nM. This product was previously labelled as GDNF Receptor alpha 1

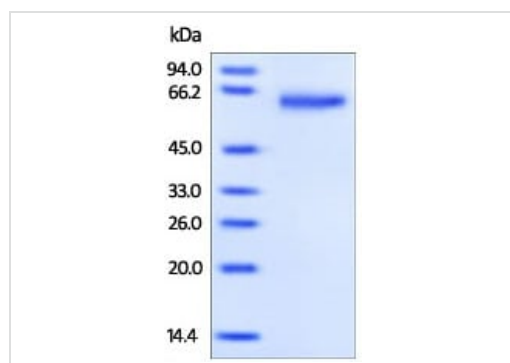
Preparation and Storage

Stability and Storage	Shipped at 4°C. Store at +4°C short term (1-2 weeks). Upon delivery aliquot. Store at -20°C or -80°C. Avoid freeze / thaw cycle. pH: 7.40 Constituents: 94% PBS, 5% Trehalose This product is an active protein and may elicit a biological response in vivo, handle with caution.
Reconstitution	Reconstitute with sterile deionized water to a concentration of 400 µg/ml.

General Info

Function	Receptor for GDNF. Mediates the GDNF-induced autophosphorylation and activation of the RET receptor.
Sequence similarities	Belongs to the GDNFR family.
Cellular localization	Cell membrane.

Images



SDS-PAGE - Recombinant human GDNF Receptor alpha 1/GFRA1 protein (ab167761)

SDS-PAGE analysis of ab167761 stained overnight with Coomassie Blue.

Please note: All products are "FOR RESEARCH USE ONLY. NOT FOR USE IN DIAGNOSTIC PROCEDURES"

Our Abpromise to you: Quality guaranteed and expert technical support

- Replacement or refund for products not performing as stated on the datasheet
- Valid for 12 months from date of delivery
- Response to your inquiry within 24 hours

- We provide support in Chinese, English, French, German, Japanese and Spanish
- Extensive multi-media technical resources to help you
- We investigate all quality concerns to ensure our products perform to the highest standards

If the product does not perform as described on this datasheet, we will offer a refund or replacement. For full details of the Abpromise, please visit <https://www.abcam.com/abpromise> or contact our technical team.

Terms and conditions

- Guarantee only valid for products bought direct from Abcam or one of our authorized distributors