

Product datasheet

Recombinant Human GDX protein ab123144

1 Image

Description

| | | |
|-----------------------------------|--|--|
| Product name | Recombinant Human GDX protein | |
| Purity | > 95 % SDS-PAGE. ab123144 was purified using conventional chromatography. | |
| Expression system | Escherichia coli | |
| Accession | P11441 | |
| Protein length | Full length protein | |
| Animal free | No | |
| Nature | Recombinant | |
| Species | Human | |
| Sequence | MQLTVKALQGRECSLQVPEDELVSTLKQLVSEKLNVP VRQQRLLFKGKAL ADGKRLSDYSIGPNSKLNLVVKPLEKVLLEEGEAQRLA DSPPPQVWQLIS KVLARHFSAADASRVLEQLQRDYERSLSRLTLDDIERL ASRFLHPEVTET MEKGFSKLEHHHHHH | |
| Predicted molecular weight | 19 kDa including tags | |
| Amino acids | 1 to 157 | |
| Tags | His tag C-Terminus | |

Specifications

Our [Abpromise guarantee](#) covers the use of **ab123144** in the following tested applications.

The application notes include recommended starting dilutions; optimal dilutions/concentrations should be determined by the end user.

| | |
|--------------------------|-------------------------------|
| Applications | SDS-PAGE Mass Spectrometry |
| Mass spectrometry | MALDI-TOF |
| Form | Liquid |
| Additional notes | Previously labelled as UBL4A. |

Preparation and Storage

Stability and Storage

Shipped at 4°C. Store at +4°C short term (1-2 weeks). Upon delivery aliquot. Store at -20°C or -80°C. Avoid freeze / thaw cycle.

pH: 8.00

Constituents: 0.02% DTT, 0.32% Tris HCl, 10% Glycerol, 0.58% Sodium chloride

General Info

Function

Component of the BAT3 complex, a multiprotein complex involved in the post-translational delivery of tail-anchored (TA) membrane proteins to the endoplasmic reticulum membrane. TA membrane proteins, also named type II transmembrane proteins, contain a single C-terminal transmembrane region. The complex acts by facilitating TA proteins capture by ASNA1/TRC40: it is recruited to ribosomes synthesizing membrane proteins, interacts with the transmembrane region of newly released TA proteins, and transfers them to ASNA1/TRC40 for targeting.

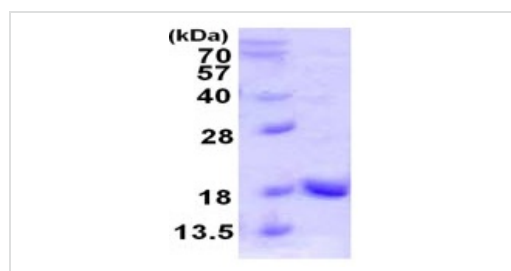
Sequence similarities

Contains 1 ubiquitin-like domain.

Cellular localization

Cytoplasm > cytosol.

Images



SDS-PAGE - Recombinant Human GDX protein
(ab123144)

12% SDS PAGE, 3 µg of ab123144 loaded.

Please note: All products are "FOR RESEARCH USE ONLY. NOT FOR USE IN DIAGNOSTIC PROCEDURES"

Our Abpromise to you: Quality guaranteed and expert technical support

- Replacement or refund for products not performing as stated on the datasheet
- Valid for 12 months from date of delivery
- Response to your inquiry within 24 hours
- We provide support in Chinese, English, French, German, Japanese and Spanish
- Extensive multi-media technical resources to help you
- We investigate all quality concerns to ensure our products perform to the highest standards

If the product does not perform as described on this datasheet, we will offer a refund or replacement. For full details of the Abpromise, please visit <https://www.abcam.com/abpromise> or contact our technical team.

Terms and conditions

- Guarantee only valid for products bought direct from Abcam or one of our authorized distributors