

Product datasheet

Recombinant Human Gemin 2 protein ab152878

1 Image

Overview

Product name	Recombinant Human Gemin 2 protein
Protein length	Full length protein

Description

Nature	Recombinant
Source	Wheat germ
Amino Acid Sequence	
Accession	O14893
Species	Human
Sequence	<p>MRRaelAGLkTMAWVPAESAVEELMPRLLPVEPCDL TEGFDPSPVPRTPQ EYLRRVQIEAAQCPDVVVAQIDPKKLKRKQSVNISLSG CQPAPEGYSPTL QWQQQQVAQFSTVRQNVNKHRSHWKSQQLDsNVTM PKSEDEEGWKKFCLG EKLCADGAVGPATNESPGIDYVQIGFPPLLSIVSRMNQ ATVTSVLEYSN WFGERDFTPELGRWLYALLACLEKPLLPEAHSLIRQLA RRCSEVRLLVDS KDDERVPALNLLICLVsRYFDQRDLADEPS</p>
Molecular weight	58 kDa including tags
Amino acids	1 to 280

Specifications

Our [Abpromise guarantee](#) covers the use of **ab152878** in the following tested applications.

The application notes include recommended starting dilutions; optimal dilutions/concentrations should be determined by the end user.

Applications	ELISA SDS-PAGE Western blot
Form	Liquid

Additional notes

Protein concentration is above or equal to 0.05 µg/µl.

Preparation and Storage

Stability and Storage

Shipped on dry ice. Upon delivery aliquot and store at -80°C. Avoid freeze / thaw cycles.

pH: 8.00

Constituents: 0.31% Glutathione, 0.79% Tris HCl

General Info

Function

The SMN complex plays an essential role in spliceosomal snRNP assembly in the cytoplasm and is required for pre-mRNA splicing in the nucleus.

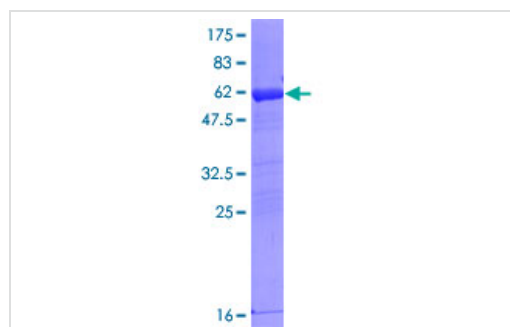
Sequence similarities

Belongs to the gemin-2 family.

Cellular localization

Nucleus > gem. Cytoplasm. Localized in subnuclear structures next to coiled bodies, called gems, which are highly enriched in spliceosomal snRNPs. Also found in the cytoplasm.

Images



12.5% SDS-PAGE analysis of ab152878 stained with Coomassie Blue.

SDS-PAGE - Recombinant Human Gemin 2 protein (ab152878)

Please note: All products are "FOR RESEARCH USE ONLY. NOT FOR USE IN DIAGNOSTIC PROCEDURES"

Our Abpromise to you: Quality guaranteed and expert technical support

- Replacement or refund for products not performing as stated on the datasheet
- Valid for 12 months from date of delivery
- Response to your inquiry within 24 hours
- We provide support in Chinese, English, French, German, Japanese and Spanish
- Extensive multi-media technical resources to help you
- We investigate all quality concerns to ensure our products perform to the highest standards

If the product does not perform as described on this datasheet, we will offer a refund or replacement. For full details of the Abpromise, please visit <https://www.abcam.com/abpromise> or contact our technical team.

Terms and conditions

- Guarantee only valid for products bought direct from Abcam or one of our authorized distributors