

Product datasheet

Recombinant Human GIPC2 protein ab123200

1 Image

Description

<b>Product name</b>	Recombinant Human GIPC2 protein
<b>Purity</b>	> 95 % SDS-PAGE. ab123200 is purified using conventional chromatography techniques.
<b>Expression system</b>	Escherichia coli
<b>Accession</b>	<a href="#">Q8TF65</a>
<b>Protein length</b>	Full length protein
<b>Animal free</b>	No
<b>Nature</b>	Recombinant
<b>Species</b>	Human
<b>Sequence</b>	<p>MGSSHHHHHH SSGLVPRGSH MGSHMPLKLR            GKKKAKSKET AGLVEGEPTG AGGGSLSASR            APARRLVFHA QLAHGSATGR VEGFSSIQEL YAQIAGAFEI            SPSEILYCTL NTPKIDMERL LGGQLGLEDF IFAHVKGIEK            EVNVYKSEDS LGLTITDNGV GYAFIKRIKD GGVIDSVKTI            CVGDHIESIN GENIVGWRHY DVAKKLKEK KEELFTMKLI            EPKKAFFIEP RSKAGKSSGE KIGCGRATLR            LRSKGPATVE EMPSETKAKA IEKIDVLEL YMGIRDIDLA            TTMFEAGKDK VNPDEFAVAL DETLGDFAFP            DEFVFDVWGV IGDARRRGL</p>
<b>Predicted molecular weight</b>	37 kDa including tags
<b>Amino acids</b>	1 to 315
<b>Tags</b>	His tag N-Terminus

Specifications

Our [Abpromise guarantee](#) covers the use of **ab123200** in the following tested applications.  
 The application notes include recommended starting dilutions; optimal dilutions/concentrations should be determined by the end user.

<b>Applications</b>	SDS-PAGE Mass Spectrometry
<b>Mass spectrometry</b>	MALDI-TOF
<b>Form</b>	Liquid

## Preparation and Storage

---

<b>Stability and Storage</b>	Shipped at 4°C. Upon delivery aliquot and store at -20°C or -80°C. Avoid repeated freeze / thaw cycles. pH: 8.00 Constituents: 0.02% DTT, 0.32% Tris HCl, 30% Glycerol (glycerin, glycerine), 0.58% Sodium chloride
------------------------------	---------------------------------------------------------------------------------------------------------------------------------------------------------------------------------------------------------------------------

## General Info

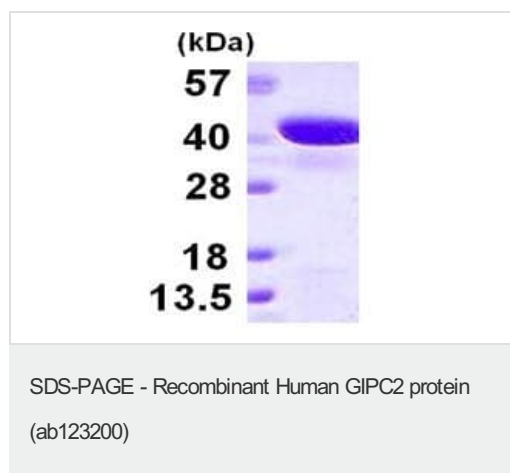
---

<b>Tissue specificity</b>	Expressed at highest levels in ascending colon and at moderate levels in adult kidney. Expressed at low levels in adult pancreas and at very low levels in adult liver. Expression is down-regulated in several primary tumors, such as kidney, colon and rectal tumors.
<b>Sequence similarities</b>	Belongs to the GIPC family. Contains 1 PDZ (DHR) domain.
<b>Cellular localization</b>	Cytoplasm.

---

## Images

---



15% SDS-PAGE showing ab123200 (3µg).

**Please note:** All products are "FOR RESEARCH USE ONLY. NOT FOR USE IN DIAGNOSTIC PROCEDURES"

## Our Abpromise to you: Quality guaranteed and expert technical support

---

- Replacement or refund for products not performing as stated on the datasheet
- Valid for 12 months from date of delivery
- Response to your inquiry within 24 hours
- We provide support in Chinese, English, French, German, Japanese and Spanish
- Extensive multi-media technical resources to help you
- We investigate all quality concerns to ensure our products perform to the highest standards

If the product does not perform as described on this datasheet, we will offer a refund or replacement. For full details of the Abpromise, please visit <https://www.abcam.com/abpromise> or contact our technical team.

## Terms and conditions

---

- Guarantee only valid for products bought direct from Abcam or one of our authorized distributors