

Product datasheet

Recombinant Human GLB1L2 protein ab164802

1 Image

Description

Product name	Recombinant Human GLB1L2 protein
Expression system	Wheat germ
Protein length	Full length protein
Animal free	No
Nature	Recombinant
Species	Human
Sequence	<p>MTTWSLRRRRPARTLGLLLLVLGFLVLRRLDWSTLVPL RLRHRQLGLQAK GWNFMLEDSTFWIFGGSIHYFRVPREYWRDRLLKMKA CGLNLTITYVPWN LHEPERGKFDGSGNLDLEAFVLMAAEIGLWVILRPGPY CSEMDLGGPLS WLLQDPGMRLRTTYKGFTEAVDLYFDHLSRVVPLQY KRGGPPIAVQVEN EYGSYNKDPAYMPYVKKALEDRGIVELLLTSDNKDGLS KGIVQGVLATIN LQSTHELQLLTTFLFNVQGTQPKMVMMEYWTGWFDWSW GGPHNILDSSSEVLK TVSAVDAGSSINLYMFHGGTNFGFMNGAMHFHDYKS DVTSYDYDAVLTE AGDYTAKYMKLDRDFGSGISGIPLPPPDLLPKMPYEPL TPVLYLSLWDAL KYLGEPIKSEKPINMENLPVNGGNGQSFYLYETSITSS GILSGHVHDR GQVFVNTVSIGFLDYKTTKIAVPLIQGYTVLRILVENRGR VNYGENIDDQ RKGLIGNLYLNDSPKLNFRYSLDMKKSFFQRFGLDKW SSLPETPTLPAF FLGSLSSSTPCDTFLKLEGWEKGVVFINGQNLGRYWN IGPQKTLYLPGP WLSGGINQVIVFEETMAGPALQFTETPHLGRNQYIK</p>
Amino acids	1 to 636
Tags	GST tag N-Terminus

Specifications

Our [Abpromise guarantee](#) covers the use of **ab164802** in the following tested applications.

The application notes include recommended starting dilutions; optimal dilutions/concentrations should be determined by the end user.

Applications	Western blot ELISA
Form	Liquid
Additional notes	Protein concentration is above or equal to 0.05 mg/ml. This product was previously labelled as GLBL2

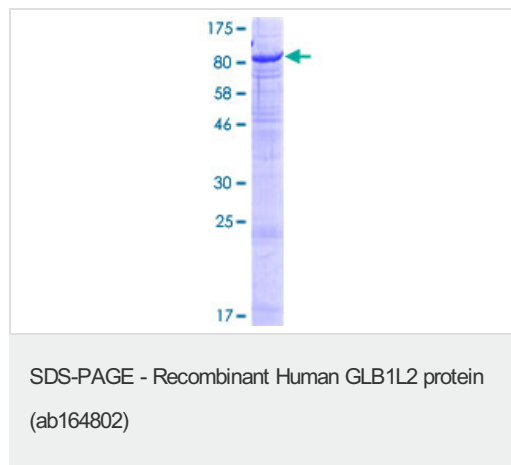
Preparation and Storage

Stability and Storage	Shipped on dry ice. Upon delivery aliquot and store at -80°C. Avoid freeze / thaw cycles. pH: 8.00 Constituents: 0.31% Glutathione, 0.79% Tris HCl
------------------------------	--

General Info

Sequence similarities	Belongs to the glycosyl hydrolase 35 family.
Cellular localization	Secreted.

Images



ab164802 on a 12.5% SDS-PAGE stained with Coomassie Blue.

Please note: All products are "FOR RESEARCH USE ONLY. NOT FOR USE IN DIAGNOSTIC PROCEDURES"

Our Abpromise to you: Quality guaranteed and expert technical support

- Replacement or refund for products not performing as stated on the datasheet
- Valid for 12 months from date of delivery
- Response to your inquiry within 24 hours

- We provide support in Chinese, English, French, German, Japanese and Spanish
- Extensive multi-media technical resources to help you
- We investigate all quality concerns to ensure our products perform to the highest standards

If the product does not perform as described on this datasheet, we will offer a refund or replacement. For full details of the Abpromise, please visit <https://www.abcam.com/abpromise> or contact our technical team.

Terms and conditions

- Guarantee only valid for products bought direct from Abcam or one of our authorized distributors