

## Product datasheet

# Recombinant Human GLTP protein ab139249

1 Image

### Description

<b>Product name</b>	Recombinant Human GLTP protein	
<b>Purity</b>	> 85 % SDS-PAGE. ab139249 is purified using conventional chromatography techniques.	
<b>Expression system</b>	Escherichia coli	
<b>Accession</b>	<a href="#">Q9NZD2</a>	
<b>Protein length</b>	Full length protein	
<b>Animal free</b>	No	
<b>Nature</b>	Recombinant	
<b>Species</b>	Human	
<b>Sequence</b>	MGSSHHHHHSSGLVPRGSHMGSMALLAEHLLKPLPAD KQIETGPFLEAV SHLPPFFDCLGSPVFTPIKADISGNITKIKAVYDTNPAKFRT LQNILEVE KEMYGAEWPKVGATLALMWLKRGLRFIQVFLQSICDGER DENHPNLIRVN ATKAYEMALKKYHGWVQKIFQAALYAAPYKSDFLKALSK GQNVTEEECL EKIRLFLVNYTATIDVIYEMYTQMNAELNYKV	
<b>Predicted molecular weight</b>	26 kDa including tags	
<b>Amino acids</b>	1 to 209	
<b>Tags</b>	His tag N-Terminus	

### Specifications

Our [Abpromise guarantee](#) covers the use of **ab139249** in the following tested applications.

The application notes include recommended starting dilutions; optimal dilutions/concentrations should be determined by the end user.

<b>Applications</b>	Mass Spectrometry SDS-PAGE
<b>Mass spectrometry</b>	MALDI-TOF
<b>Form</b>	Liquid

## Preparation and Storage

### Stability and Storage

Shipped at 4°C. Store at +4°C short term (1-2 weeks). Upon delivery aliquot. Store at -20°C or -80°C. Avoid freeze / thaw cycle.

pH: 8.00

Constituents: 0.02% DTT, 0.32% Tris HCl, 20% Glycerol (glycerin, glycerine), 1.17% Sodium chloride

## General Info

### Function

Accelerates the intermembrane transfer of various glycolipids. Catalyzes the transfer of various glycosphingolipids between membranes but does not catalyze the transfer of phospholipids. May be involved in the intracellular translocation of glucosylceramides.

### Tissue specificity

Detected in fibroblasts (at protein level). Detected in fibroblasts and in various cancer cell lines.

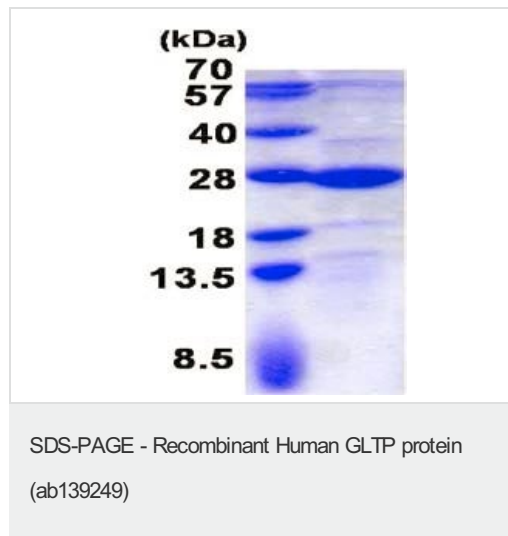
### Sequence similarities

Belongs to the GLTP family.

### Cellular localization

Cytoplasm.

## Images



15% SDS-PAGE analysis of 3 µg ab139249.

**Please note:** All products are "FOR RESEARCH USE ONLY. NOT FOR USE IN DIAGNOSTIC PROCEDURES"

## Our Abpromise to you: Quality guaranteed and expert technical support

- Replacement or refund for products not performing as stated on the datasheet
- Valid for 12 months from date of delivery
- Response to your inquiry within 24 hours
- We provide support in Chinese, English, French, German, Japanese and Spanish
- Extensive multi-media technical resources to help you
- We investigate all quality concerns to ensure our products perform to the highest standards

If the product does not perform as described on this datasheet, we will offer a refund or replacement. For full details of the Abpromise, please visit <https://www.abcam.com/abpromise> or contact our technical team.

## Terms and conditions

---

- Guarantee only valid for products bought direct from Abcam or one of our authorized distributors