

Product datasheet

Recombinant Human Glucose Transporter GLUT3 protein ab152681

[1 References](#) [1 Image](#)

Description

Product name	Recombinant Human Glucose Transporter GLUT3 protein
Expression system	Wheat germ
Accession	<u>P11169</u>
Protein length	Full length protein
Animal free	No
Nature	Recombinant
Species	Human
Sequence	MGTQKVTPALIFAITVATIGSFQFGYNTGVINAPEKIIKEFINK TLTDKG NAPPSEVLLTSLWLSVAIFSVGGMIGSFSVGLFVNRFGR RNSMLVNULL AVTGGCFMGLCKVAKSVEMLILGRLVIGLFCGLCTGFVPM YGEISPTAL RGAFGTLNQLGIVVILVAQIFGLEFILGSEELWPLLLGFIL PAILQSA ALPFCPESPRFLLINRKEEENAKQILQRLWGTQDVSQDIQ EMKDESARMS QEKQVTVLELFRVSSYRQPIIIISIVLQLSQQLSGINAVFYST GIFKDAG VQEPIYATIGAGVVNTIFTVVSFLVERAGRRTLHMIGLGGM AFCSTLMT VLLLLKDNNGMSFVCIGAILVFVAFFEIGPGPIPWFVAEL FSQGPRPA AMAVAGCSNWTSNFLVGLLFPSSAAHYLGAYVFIIFTGFLITF LAFTFFKV PETRGRTFEDITRAFEGQAHGADRSGKDGVMEMNSIEPA KETTTNV
Predicted molecular weight	80 kDa
Amino acids	1 to 496

Specifications

Our **Abpromise guarantee** covers the use of **ab152681** in the following tested applications.

The application notes include recommended starting dilutions; optimal dilutions/concentrations should be determined by the end user.

Applications	SDS-PAGE
	Western blot
	ELISA
Form	Liquid

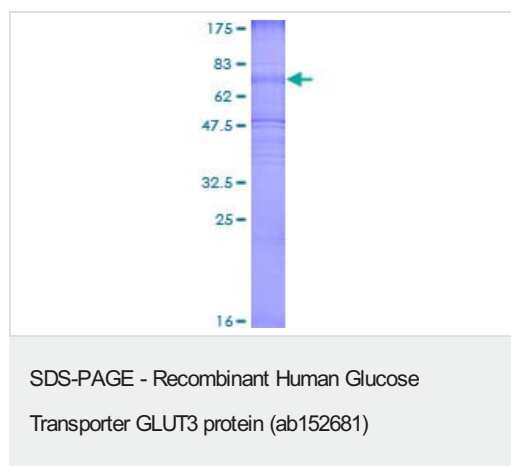
Preparation and Storage

Stability and Storage	Shipped on dry ice. Upon delivery aliquot and store at -80°C. Avoid freeze / thaw cycles. pH: 8.00 Constituents: 0.31% Glutathione, 0.79% Tris HCl
------------------------------	--

General Info

Function	Facilitative glucose transporter. Probably a neuronal glucose transporter.
Tissue specificity	Highly expressed in brain. Expressed in many tissues.
Sequence similarities	Belongs to the major facilitator superfamily. Sugar transporter (TC 2.A.1.1) family. Glucose transporter subfamily.
Cellular localization	Membrane.

Images



12.5% SDS-PAGE analysis of **ab152861** stained with Coomassie Blue.

Please note: All products are "FOR RESEARCH USE ONLY. NOT FOR USE IN DIAGNOSTIC PROCEDURES"

Our Abpromise to you: Quality guaranteed and expert technical support

- Replacement or refund for products not performing as stated on the datasheet
- Valid for 12 months from date of delivery
- Response to your inquiry within 24 hours

- We provide support in Chinese, English, French, German, Japanese and Spanish
- Extensive multi-media technical resources to help you
- We investigate all quality concerns to ensure our products perform to the highest standards

If the product does not perform as described on this datasheet, we will offer a refund or replacement. For full details of the Abpromise, please visit <https://www.abcam.com/abpromise> or contact our technical team.

Terms and conditions

- Guarantee only valid for products bought direct from Abcam or one of our authorized distributors