

Product datasheet

Recombinant Human GOLPH3/MIDAS protein ab112422

[1 Image](#)

Description

Product name	Recombinant Human GOLPH3/MIDAS protein
Expression system	Wheat germ
Accession	Q9H4A6
Protein length	Full length protein
Animal free	No
Nature	Recombinant
Species	Human
Sequence	<pre> MTSLTQRSSGLVQRRTEASRNAADKERAAGGGAGSS EDDAQSRRDEQDDD DKGDSKETRLTLMEEVLLLGLKDREGYTSFWNDCISS GLRGCMLIELALR GRLQLEACGMRRKSLLTRKVICKSDAPTGDVLLDEAL KHKETQPPETVQ NWIELLSGETWNPLKLHYQLRNVRERLAKNLVEKGVLT TEKQNFLLFDMT THPLTNNNIKQRLIKVKVQEAVLDKVVNDPHRMDRLLA LYLAHASDVLE NAFAPLLDEQYDLATKRVRQLLDLDPEVECLKANTNE VLWAVVAFTK </pre>
Predicted molecular weight	59 kDa including tags
Amino acids	1 to 298

Specifications

Our [Abpromise guarantee](#) covers the use of **ab112422** in the following tested applications.

The application notes include recommended starting dilutions; optimal dilutions/concentrations should be determined by the end user.

Applications	SDS-PAGE ELISA Western blot
Form	Liquid

Additional notes

Best use within three months from the date of receipt of this protein.
This product was previously labelled as GOLPH3

Preparation and Storage

Stability and Storage

Shipped on dry ice. Upon delivery aliquot and store at -80°C. Avoid freeze / thaw cycles.
pH: 8.00
Constituents: 0.79% Tris HCl, 0.31% Glutathione

General Info

Function

Involved in modulation of mTOR signaling. Involved in the regulation of mitochondrial lipids, leading to increase of mitochondrial mass. Potential oncogene.

Tissue specificity

Detected in muscle fibers of patients with mitochondrial diseases; not detected in normal muscle fibers.

Sequence similarities

Belongs to the GOLPH3/VPS74 family.

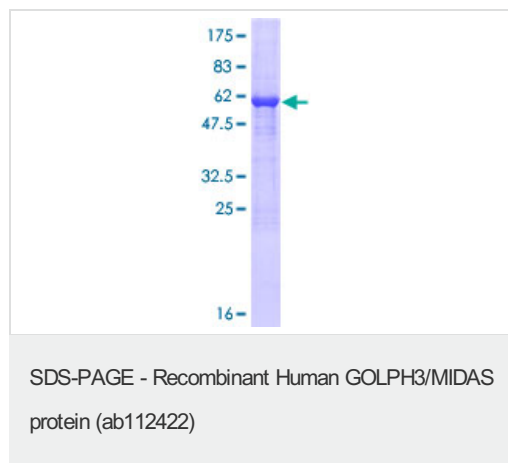
Post-translational modifications

Phosphorylated.

Cellular localization

Cell membrane. Endosome. Cytoplasm. Golgi apparatus > Golgi stack membrane. Mitochondrion intermembrane space.

Images



ab112422 analysed on a 12.5% SDS-PAGE gel stained with Coomassie Blue.

Please note: All products are "FOR RESEARCH USE ONLY. NOT FOR USE IN DIAGNOSTIC PROCEDURES"

Our Abpromise to you: Quality guaranteed and expert technical support

- Replacement or refund for products not performing as stated on the datasheet
- Valid for 12 months from date of delivery
- Response to your inquiry within 24 hours

- We provide support in Chinese, English, French, German, Japanese and Spanish
- Extensive multi-media technical resources to help you
- We investigate all quality concerns to ensure our products perform to the highest standards

If the product does not perform as described on this datasheet, we will offer a refund or replacement. For full details of the Abpromise, please visit <https://www.abcam.com/abpromise> or contact our technical team.

Terms and conditions

- Guarantee only valid for products bought direct from Abcam or one of our authorized distributors