

Product datasheet

Recombinant Human GPM6B protein ab132899

1 Image

Description

Product name	Recombinant Human GPM6B protein
Expression system	Wheat germ
Accession	Q13491-3
Protein length	Full length protein
Animal free	No
Nature	Recombinant
Species	Human
Sequence	<p>MKPAMETAAEENTEQSQERKVNNSRAEMEIGRYHWMYPG SKNHQYHPVPTL GDRASPLSSPGCFECCIKCLGGVPYASLVATILCFSGVAL FCGCGHVALA GTVAILEQHFSTNASDHALLSEVIQLMQYVIYGIASFFFLYGI LLAEGF YTTSAVKELHGEFKTTACGRCISGMFVFLTYVLGVAWLGV FGFSAVPVFM FYNWSTCEVIKSPQTNGTTGVEQICVDIRQYGIIPWNAFPG KICGSALE NICNTNEFYMSYHLFIVACAGAGATVIALLYMMATTYNYAVL KFKSRED CCTKF</p>
Predicted molecular weight	60 kDa including tags
Amino acids	1 to 305

Specifications

Our [Abpromise guarantee](#) covers the use of **ab132899** in the following tested applications.

The application notes include recommended starting dilutions; optimal dilutions/concentrations should be determined by the end user.

Applications	SDS-PAGE
	ELISA
	Western blot
Form	Liquid

Additional notes

Preparation and Storage

Stability and Storage Shipped on dry ice. Upon delivery aliquot and store at -80°C. Avoid freeze / thaw cycles.
pH: 8.00
Constituents: 0.31% Glutathione, 0.79% Tris HCl

General Info

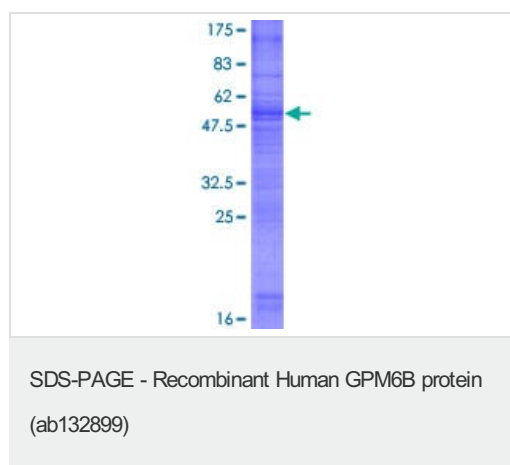
Function May be involved in neural development. Involved in regulation of osteoblast function and bone formation. Involved in matrix vesicle release by osteoblasts; this function seems to involve maintenance of the actin cytoskeleton. May be involved in cellular trafficking of SERT and thereby in regulation of serotonin uptake.

Tissue specificity Neurons and glia; cerebellar Bergmann glia, in glia within white matter tracts of the cerebellum and cerebrum, and in embryonic dorsal root ganglia.

Sequence similarities Belongs to the myelin proteolipid protein family.

Cellular localization Cell membrane. Colocalizes with SERT at the plasma membrane.

Images



12.5% SDS-PAGE analysis of ab132899 stained with Coomassie Blue.

Please note: All products are "FOR RESEARCH USE ONLY. NOT FOR USE IN DIAGNOSTIC PROCEDURES"

Our Promise to you: Quality guaranteed and expert technical support

- Replacement or refund for products not performing as stated on the datasheet
- Valid for 12 months from date of delivery
- Response to your inquiry within 24 hours
- We provide support in Chinese, English, French, German, Japanese and Spanish
- Extensive multi-media technical resources to help you

- We investigate all quality concerns to ensure our products perform to the highest standards

If the product does not perform as described on this datasheet, we will offer a refund or replacement. For full details of the Abpromise, please visit <https://www.abcam.com/abpromise> or contact our technical team.

Terms and conditions

- Guarantee only valid for products bought direct from Abcam or one of our authorized distributors