

Product datasheet

Recombinant Human GPR161 protein ab161641

1 Image

Description

Product name	Recombinant Human GPR161 protein	
Expression system	Wheat germ	
Accession	Q8N6U8	
Protein length	Protein fragment	
Animal free	No	
Nature	Recombinant	
Species	Human	
Sequence	SNRITDLGLSPHLTALMAGGQPLGHSSSTGDTGFSCSQD SGTDMMLEDY TSDDNPPSHCTCPPKRRSSVTFEDEVQIKEAAKNSILHV KAEVHKSLD	
Amino acids	362 to 460	
Tags	GST tag N-Terminus	

Specifications

Our [Abpromise guarantee](#) covers the use of **ab161641** in the following tested applications.

The application notes include recommended starting dilutions; optimal dilutions/concentrations should be determined by the end user.

Applications	ELISA
	Western blot
Form	Liquid

Additional notes

Preparation and Storage

Stability and Storage	Shipped on dry ice. Upon delivery aliquot and store at -80°C. Avoid freeze / thaw cycles. pH: 8.00 Constituents: 0.31% Glutathione, 0.79% Tris HCl
------------------------------	--

General Info

Function

Key negative regulator of Shh signaling, which promotes the processing of GLI3 into GLI3R during neural tube development. Recruited by TULP3 and the IFT-A complex to primary cilia and acts as a regulator of the PKA-dependent basal repression machinery in Shh signaling by increasing cAMP levels, leading to promote the PKA-dependent processing of GLI3 into GLI3R and repress the Shh signaling. In presence of SHH, it is removed from primary cilia and is internalized into recycling endosomes, preventing its activity and allowing activation of the Shh signaling. Its ligand is unknown.

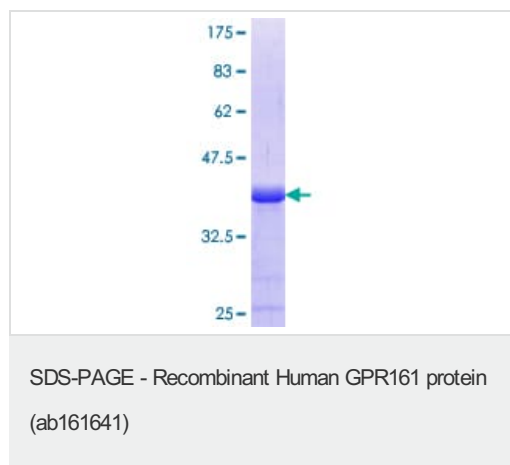
Sequence similarities

Belongs to the G-protein coupled receptor 1 family.

Cellular localization

Cell projection, cilium membrane. Cell membrane. Mainly localizes to primary cilium in a TULP3 and IFT-A complex-dependent manner. In presence of SHH, it is removed from primary cilia and is internalized into recycling endosomes and is apparently not degraded (By similarity).

Images



ab161641 on a 12.5% SDS-PAGE stained with Coomassie Blue.

Please note: All products are "FOR RESEARCH USE ONLY. NOT FOR USE IN DIAGNOSTIC PROCEDURES"

Our Abpromise to you: Quality guaranteed and expert technical support

- Replacement or refund for products not performing as stated on the datasheet
- Valid for 12 months from date of delivery
- Response to your inquiry within 24 hours
- We provide support in Chinese, English, French, German, Japanese and Spanish
- Extensive multi-media technical resources to help you
- We investigate all quality concerns to ensure our products perform to the highest standards

If the product does not perform as described on this datasheet, we will offer a refund or replacement. For full details of the Abpromise, please visit <https://www.abcam.com/abpromise> or contact our technical team.

Terms and conditions

- Guarantee only valid for products bought direct from Abcam or one of our authorized distributors