

## Product datasheet

# Recombinant Human GPR2/CCR10 protein ab131829

1 Image

### Description

<b>Product name</b>	Recombinant Human GPR2/CCR10 protein	
<b>Expression system</b>	Wheat germ	
<b>Accession</b>	<a href="#">P46092</a>	
<b>Protein length</b>	Full length protein	
<b>Animal free</b>	No	
<b>Nature</b>	Recombinant	
<b>Species</b>	Human	
<b>Sequence</b>	MGTEATEQVSWGHHYSGDEEDAYSAEPLPELCYKADVQA FSRAFQPSVSLT VAALGLAGNGLVLATHLAARRAARSPTSAHLLQLALADLL LALTLPFAAA GALQGWSLGSATCRTISGLYSASFHAGFLFLACISADRYW AIARALPAGP RPSTPGRAHLVSVIWWLLSLLLALPALLFSQDQGQREGQRR CRLIFPEGLT QTVKGASAVAQVALGFALPLGVMVACYALLGRTLLAARG PERRRALRVVV ALVAAFVVLQLPYSLALLLDTADLLAARERSCPASKRKDV ALLVTSGLAL ARCGLNPVLYAFLGLRFRQDLRRLLRGGSCPSGPQPRRG CPRRPRLSSCS APTETHSLSWDN	
<b>Predicted molecular weight</b>	65 kDa including tags	
<b>Amino acids</b>	1 to 362	

### Specifications

Our [Abpromise guarantee](#) covers the use of **ab131829** in the following tested applications.

The application notes include recommended starting dilutions; optimal dilutions/concentrations should be determined by the end user.

<b>Applications</b>	ELISA
	Western blot
	SDS-PAGE
<b>Form</b>	Liquid

## Preparation and Storage

---

### Stability and Storage

Shipped on dry ice. Upon delivery aliquot and store at -80°C. Avoid freeze / thaw cycles.

pH: 8.00

Constituents: 0.31% Glutathione, 0.79% Tris HCl

## General Info

---

### Function

Receptor for chemokines SCYA27 and SCYA28. Subsequently transduces a signal by increasing the intracellular calcium ions level and stimulates chemotaxis in a pre-B cell line.

### Tissue specificity

Expressed at high levels in adult testis, small intestine, fetal lung, fetal kidney. Weaker expression was observed in many other adult tissues including spleen, thymus, lymph node, Peyer patches, colon, heart, ovary, peripheral blood lymphocytes, thyroid and spinal cord. Also expressed by melanocytes, dermal fibroblasts, dermal microvascular endothelial cells. Also detected in T-cells and in skin-derived Langerhans cells.

### Sequence similarities

Belongs to the G-protein coupled receptor 1 family.

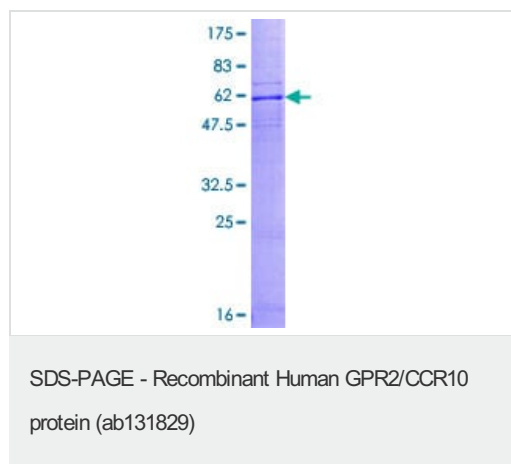
### Cellular localization

Cell membrane.

---

## Images

---



12.5% SDS-PAGE analysis of ab131829 stained with Coomassie Blue.

**Please note:** All products are "FOR RESEARCH USE ONLY. NOT FOR USE IN DIAGNOSTIC PROCEDURES"

## Our Abpromise to you: Quality guaranteed and expert technical support

---

- Replacement or refund for products not performing as stated on the datasheet
- Valid for 12 months from date of delivery
- Response to your inquiry within 24 hours
- We provide support in Chinese, English, French, German, Japanese and Spanish
- Extensive multi-media technical resources to help you
- We investigate all quality concerns to ensure our products perform to the highest standards

If the product does not perform as described on this datasheet, we will offer a refund or replacement. For full details of the Abpromise,

please visit <https://www.abcam.com/abpromise> or contact our technical team.

## **Terms and conditions**

---

- Guarantee only valid for products bought direct from Abcam or one of our authorized distributors