

Product datasheet

Recombinant Human Grainyhead-like protein 1 homolog ab162241

[1 Image](#)

Overview

Product name	Recombinant Human Grainyhead-like protein 1 homolog
Protein length	Full length protein

Description

Nature	Recombinant
Source	Wheat germ
Amino Acid Sequence	
Species	Human

Sequence	<p>MTQEYDNKRPVLLVQNEALYPQRRSYTSEDEAWKSFL ENPLTAATKAMMS INGDEDSAAALGLLYDYKVPRERRSSTAKPEVEHPE PDHSKRNSIPVT EQPLISAGENRVQVLKNVPFNMLPHGNQLGIDKRGHLT APDTTVTVSIA TMPHTSIKTETQPHGFAVGIPPAVYHPEPTERVVVFDR NLNTDQFSSGAQ APNAQRRTPDSTFSETFKEGVQEVFFPSDLSLRMPG MNSDYVFDVSGN NFEYTLASKSLRQKPGDSTMTYLNKGQFYPTLKEVS SSEGIHHPISKV RSVIMVFAEDKSREDQLRHWKYWHSRQHTAKQRCI DIADYKESFNTISN VEEIAYNISFTWDINDEAKVFISVNCLSTDFSSQKGVK GLPLNIQIDTY SYNNRSNKPVHRAYCQIKVFCDKGAERKIRDEERKQS KRKVSDVKVPLLP SHKRMDITVFKPFIDLDTQPVLVFPDVHFANLQRGTHVL PIASEELEGE SVLKRGPYGTEDDFAVPPSTKLARIEEPKRVLLYVRKE SEEVFDALMLKT PSLKGLMEAISDKYDVPHDKIGKIFKKCKKGILVNMD NIVKHYSNEDTF QLQIEEAGGSYKLTLEI</p>
-----------------	--

Amino acids	1 to 618
Tags	GST tag N-Terminus

Specifications

Our [Abpromise guarantee](#) covers the use of **ab162241** in the following tested applications.

The application notes include recommended starting dilutions; optimal dilutions/concentrations should be determined by the end user.

Applications	ELISA Western blot
Form	Liquid
Additional notes	Protein concentration is above or equal to 0.05 mg/ml.

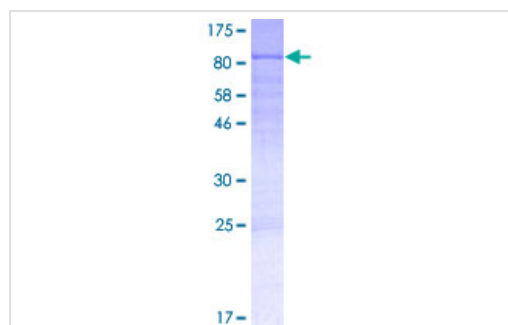
Preparation and Storage

Stability and Storage	Shipped on dry ice. Upon delivery aliquot and store at -80°C. Avoid freeze / thaw cycles. pH: 8.00 Constituents: 0.31% Glutathione, 0.79% Tris HCl
------------------------------	--

General Info

Function	Transcription factor. Isoform 1 may function as an activator and isoform 2 as a repressor in tissues where both forms are expressed. May play a role in development. May be involved in epidermal differentiation (By similarity). Binds and transactivates the EN1 promoter.
Tissue specificity	Isoform 1 is highly expressed in brain, pancreas, tonsil, placenta and kidney. Isoform 2 is highly expressed in brain and liver. Highly expressed in placental JEG-3 cells and at very low levels in non-steroidogenic cells. No expression detected in adrenal NCI-H295A cells.
Sequence similarities	Belongs to the grh/CP2 family. Grainyhead subfamily.
Developmental stage	Expressed in fetal liver and brain.
Cellular localization	Nucleus.

Images



ab162241 on a 12.5% SDS-PAGE stained with Coomassie Blue.

SDS-PAGE - Recombinant Human Grainyhead-like protein 1 homolog (ab162241)

Please note: All products are "FOR RESEARCH USE ONLY. NOT FOR USE IN DIAGNOSTIC PROCEDURES"

Our Abpromise to you: Quality guaranteed and expert technical support

- Replacement or refund for products not performing as stated on the datasheet
- Valid for 12 months from date of delivery
- Response to your inquiry within 24 hours

- We provide support in Chinese, English, French, German, Japanese and Spanish
- Extensive multi-media technical resources to help you
- We investigate all quality concerns to ensure our products perform to the highest standards

If the product does not perform as described on this datasheet, we will offer a refund or replacement. For full details of the Abpromise, please visit <https://www.abcam.com/abpromise> or contact our technical team.

Terms and conditions

- Guarantee only valid for products bought direct from Abcam or one of our authorized distributors