

Product datasheet

Recombinant Human GRB2 protein ab172149

1 Image

Overview

Product name	Recombinant Human GRB2 protein
Protein length	Full length protein

Description

Nature	Recombinant
Source	Escherichia coli
Amino Acid Sequence	
Accession	P62993-1
Species	Human
Sequence	<pre> MEIAIKYDFKATADDELSFKRGDILKVLNEECDQNWY KAELNGKDGFIK NYIEMKPHPWFFGKIPRAKAEEMLSKQRHDGAFLIRES ESAPGDFSLSVK FGNDVQHFKVLRDGAGKYFLWVVKFNSLNELVDYHR STSVSRNQQIFLRD IEQVPQQPTYVQALFDFDPQEDGELGFRRGDFIHVMD NSDPNWWKGACHG QTGMFPRNYVTPVNRNVLEHHHHHH </pre>
Molecular weight	26 kDa including tags
Amino acids	1 to 217
Tags	His tag C-Terminus

Specifications

Our [Abpromise guarantee](#) covers the use of **ab172149** in the following tested applications.

The application notes include recommended starting dilutions; optimal dilutions/concentrations should be determined by the end user.

Applications	SDS-PAGE
Endotoxin level	< 1.000 Eu/µg
Purity	>95% by SDS-PAGE .
Form	Lyophilised

Preparation and Storage

Stability and Storage

Shipped at 4°C. Upon delivery aliquot. Store at -20°C or -80°C. Avoid freeze / thaw cycle.

pH: 8.00

Constituents: 0.88% Sodium chloride, 0.32% Tris HCl

Reconstitution

Always centrifuge tubes before opening. Do not mix by vortex or pipetting. It is not recommended to reconstitute to a concentration less than 100 µg/ml. Dissolve the lyophilized protein in 1X PBS. Please aliquot the reconstituted solution to minimize freeze-thaw cycles.

General Info

Function

Adapter protein that provides a critical link between cell surface growth factor receptors and the Ras signaling pathway.

Isoform GRB3-3 does not bind to phosphorylated epidermal growth factor receptor (EGFR) but inhibits EGF-induced transactivation of a RAS-responsive element. Isoform GRB3-3 acts as a dominant negative protein over GRB2 and by suppressing proliferative signals, may trigger active programmed cell death.

Sequence similarities

Belongs to the GRB2/sem-5/DRK family.

Contains 1 SH2 domain.

Contains 2 SH3 domains.

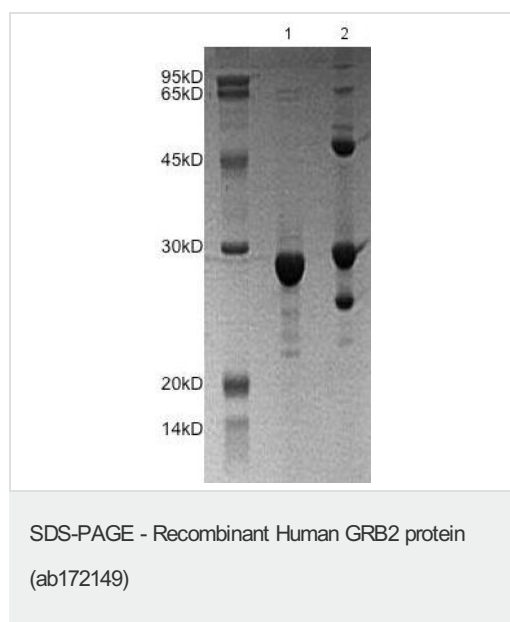
Domain

The SH3 domains mediate interaction with RALGPS1 and SHB.

Cellular localization

Golgi apparatus.

Images



SDS-PAGE analysis of ab172149 in 1) Non reducing or 2) Reducing conditions.

Please note: All products are "FOR RESEARCH USE ONLY AND ARE NOT INTENDED FOR DIAGNOSTIC OR THERAPEUTIC USE"

Our Abpromise to you: Quality guaranteed and expert technical support

- Replacement or refund for products not performing as stated on the datasheet
- Valid for 12 months from date of delivery
- Response to your inquiry within 24 hours

- We provide support in Chinese, English, French, German, Japanese and Spanish
- Extensive multi-media technical resources to help you
- We investigate all quality concerns to ensure our products perform to the highest standards

If the product does not perform as described on this datasheet, we will offer a refund or replacement. For full details of the Abpromise, please visit <https://www.abcam.com/abpromise> or contact our technical team.

Terms and conditions

- Guarantee only valid for products bought direct from Abcam or one of our authorized distributors