

Product datasheet

Recombinant human GRK1 protein ab105126

2 Images

Description

<b>Product name</b>	Recombinant human GRK1 protein
<b>Biological activity</b>	Specific activity: 4.3 nmol/min/mg
<b>Purity</b>	> 95 % SDS-PAGE.
<b>Expression system</b>	Baculovirus infected Sf9 cells
<b>Accession</b>	<a href="#">Q15835</a>
<b>Protein length</b>	Full length protein
<b>Animal free</b>	No
<b>Nature</b>	Recombinant
<b>Species</b>	Human
<b>Predicted molecular weight</b>	95 kDa
<b>Amino acids</b>	1 to 563

Specifications

Our [Abpromise guarantee](#) covers the use of **ab105126** in the following tested applications.

The application notes include recommended starting dilutions; optimal dilutions/concentrations should be determined by the end user.

<b>Applications</b>	Western blot Functional Studies
<b>Form</b>	Liquid
<b>Additional notes</b>	It is recommended to store this protein at -80°C in glycerol to preserve its activity.

[ab204870](#) (Cdc25C peptide) can be utilized as a substrate for assessing kinase activity

Preparation and Storage

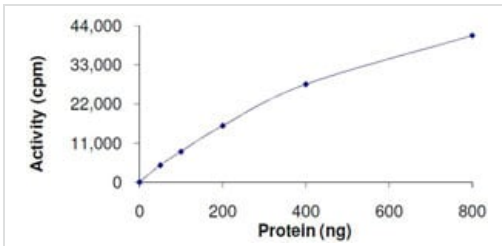
<b>Stability and Storage</b>	Shipped on dry ice. Upon delivery aliquot and store at -80°C. Avoid freeze / thaw cycles. pH: 7.50 Constituents: 0.307% Glutathione, 0.00174% PMSF, 0.00385% DTT, 0.79% Tris HCl, 0.00292% EDTA, 25% Glycerol (glycerin, glycerine), 0.87% Sodium chloride
------------------------------	--

This product is an active protein and may elicit a biological response in vivo, handle with caution.

## General Info

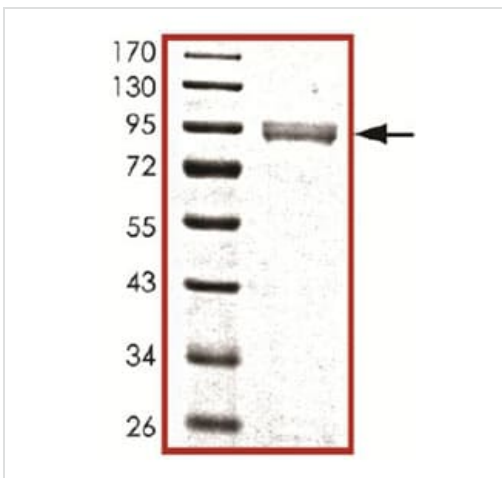
<b>Function</b>	Retina-specific kinase involved in the signal turnoff via phosphorylation of rhodopsin (RHO), the G protein-coupled receptor that initiates the phototransduction cascade. This rapid desensitization is essential for scotopic vision and permits rapid adaptation to changes in illumination.
<b>Tissue specificity</b>	Retinal-specific. Expressed in rods and cones cells.
<b>Involvement in disease</b>	Night blindness, congenital stationary, Oguchi type 2
<b>Sequence similarities</b>	Belongs to the protein kinase superfamily. AGC Ser/Thr protein kinase family. GPRK subfamily. Contains 1 AGC-kinase C-terminal domain. Contains 1 protein kinase domain. Contains 1 RGS domain.
<b>Post-translational modifications</b>	Autophosphorylated, Ser-21 is a minor site of autophosphorylation compared to Ser-491 and Thr-492 (By similarity). Phosphorylation at Ser-21 is regulated by light and activated by cAMP. Farnesylation is required for full activity.
<b>Cellular localization</b>	Membrane.

## Images



Kinase Activity Plot. Specific activity is 4.3 nmol/min/mg

Functional Studies - Recombinant human GRK1 protein (ab105126)



Recombinant human GRK1 protein (ab105126) + plus proprietary tag

Western blot - Recombinant human GRK1 protein (ab105126)

**Please note:** All products are "FOR RESEARCH USE ONLY. NOT FOR USE IN DIAGNOSTIC PROCEDURES"

### **Our Abpromise to you: Quality guaranteed and expert technical support**

---

- Replacement or refund for products not performing as stated on the datasheet
- Valid for 12 months from date of delivery
- Response to your inquiry within 24 hours
- We provide support in Chinese, English, French, German, Japanese and Spanish
- Extensive multi-media technical resources to help you
- We investigate all quality concerns to ensure our products perform to the highest standards

If the product does not perform as described on this datasheet, we will offer a refund or replacement. For full details of the Abpromise, please visit <https://www.abcam.com/abpromise> or contact our technical team.

### **Terms and conditions**

---

- Guarantee only valid for products bought direct from Abcam or one of our authorized distributors