

Product datasheet

Recombinant human GRX2 protein ab82665

1 References 1 Image

Description

Product name	Recombinant human GRX2 protein
Biological activity	Specific activity : 45 U/mg One unit will cause the oxidation of 1µmole of NADPH per min.
Purity	> 95 % SDS-PAGE.
Expression system	Escherichia coli
Protein length	Protein fragment
Animal free	No
Nature	Recombinant
Species	Human
Amino acids	41 to 164

Specifications

Our [Abpromise guarantee](#) covers the use of **ab82665** in the following tested applications.

The application notes include recommended starting dilutions; optimal dilutions/concentrations should be determined by the end user.

Applications	Functional Studies SDS-PAGE
Form	Liquid
Additional notes	This product was previously labelled as Glutaredoxin 2

Preparation and Storage

Stability and Storage	Shipped at 4°C. Upon delivery aliquot. Store at -80°C. Avoid freeze / thaw cycle. pH: 7.00 Constituents: 0.476% HEPES, 10% Glycerol This product is an active protein and may elicit a biological response in vivo, handle with caution.
------------------------------	---

General Info

Function

Glutathione-dependent oxidoreductase that facilitates the maintenance of mitochondrial redox homeostasis upon induction of apoptosis by oxidative stress. Involved in response to hydrogen peroxide and regulation of apoptosis caused by oxidative stress. Acts as a very efficient catalyst of monothiol reactions because of its high affinity for protein glutathione-mixed disulfides. Can receive electrons not only from glutathione (GSH), but also from thioredoxin reductase supporting both monothiol and dithiol reactions. Efficiently catalyzes both glutathionylation and deglutathionylation of mitochondrial complex I, which in turn regulates the superoxide production by the complex. Overexpression decreases the susceptibility to apoptosis and prevents loss of cardiolipin and cytochrome c release.

Tissue specificity

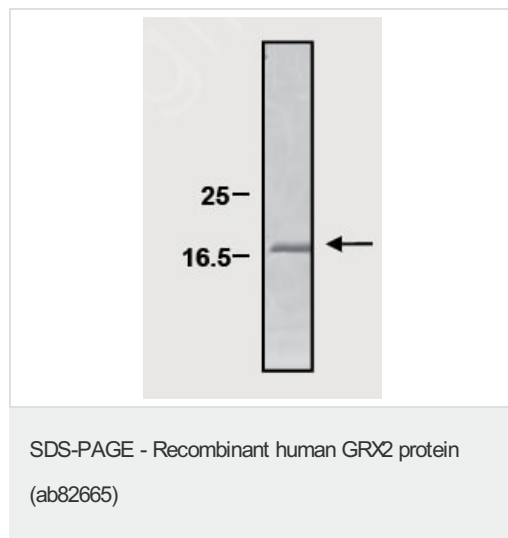
Widely expressed. Expressed in brain, heart, skeletal muscle, colon, thymus, spleen, kidney, liver, small intestine, placenta and lung. Not expressed in peripheral blood leukocytes.

Sequence similarities

Belongs to the glutaredoxin family.
Contains 1 glutaredoxin domain.

Cellular localization

Mitochondrion and Nucleus.

Images

ab82665 at 1 µg on SDS-PAGE.

Please note: All products are "FOR RESEARCH USE ONLY. NOT FOR USE IN DIAGNOSTIC PROCEDURES"

Our Abpromise to you: Quality guaranteed and expert technical support

- Replacement or refund for products not performing as stated on the datasheet
- Valid for 12 months from date of delivery
- Response to your inquiry within 24 hours
- We provide support in Chinese, English, French, German, Japanese and Spanish
- Extensive multi-media technical resources to help you
- We investigate all quality concerns to ensure our products perform to the highest standards

If the product does not perform as described on this datasheet, we will offer a refund or replacement. For full details of the Abpromise, please visit <https://www.abcam.com/abpromise> or contact our technical team.

Terms and conditions

- Guarantee only valid for products bought direct from Abcam or one of our authorized distributors