

Product datasheet

Recombinant human GST-KIF5B-Ret fusion protein (Active) ab268707

2 Images

Description

<b>Product name</b>	Recombinant human GST-KIF5B-Ret fusion protein (Active)	
<b>Biological activity</b>	The specific activity was determined to be 49.5 nmol/min/mg in a kinase assay using Poly (4:1 Glu, Tyr) peptide substrate.	
<b>Purity</b>	> 75 % SDS-PAGE.	
<b>Expression system</b>	Baculovirus infected Sf9 cells	
<b>Accession</b>	<a href="#">P33176</a> <a href="#">P07949</a>	
<b>Protein length</b>	Protein fragment	
<b>Animal free</b>	No	
<b>Nature</b>	Recombinant	
<b>Amino Acid Sequence 1</b>		
<b>Species</b>	Human	
<b>Sequence</b>	MADLAECNIKVMCRFRPLNESEVNRGDKYIAKFQGEDTV VIASKPYAFDR VFQSSTSQQEVYNDCAKKVKDVLEGYNGTIFAYGQTSSG KTHTMEGKLH DPEGMGIIPRIVQDIFNYYSMDENLEFHIKVSYFEIMDKIRD LLDVSK TNLSVHEDKNRVPYVKGCTERFVCSPDEVMDTIDEGKSN RHHAVTNMNEH SSRSHSIFLINVKQENTQTEQKLSGKLYLVDLAGSEKVSKT GAEGAVLDE AKNINKSLSALGNVISALAEGSTVVPYRDSKMTRILQDSL GNCRTTMI CCSPSSYNESETKSTLLFGQRAKTIKNTVCVNVELTAEQW KKKYEKEKEK NKILRNTIQWLENELNRWRNGETVPIDEQFDKEKANLEAFT VDKDITLTN DKPATAIGVIGNFTDAERRKCEEEIAKLYQLDDKDEEINQ QSQLVEKLLK TQMLDQEELLASTRRDQDNMQAELNRLQAENDASKEEV	

KEVLQALEELAV  
NYDQKSQEVEDKTKEYELLSDELNQKSATLASIDAELQKL  
KEMTNHQKKR AAEMMASLLKDLAEIGIavgNNDVK

**Molecular weight information** Approx 132 kDaby SDS-PAGE (GST-KIF5B-Ret fusion protein).

**Amino acids** 1 to 575

**Tags** GST tag N-Terminus

**Additional sequence information** GenBank: NM\_004521

#### Amino Acid Sequence 2

**Species** Human

**Sequence** 713-end

**Molecular weight information** Approx 132 kDa by SDS-PAGE (GST-KIF5B-Ret fusion protein)

**Additional sequence information** GenBank: NM\_020630

**Description** Recombinant human Ret + KIF5B protein (Active)

#### Specifications

---

Our [Abpromise guarantee](#) covers the use of **ab268707** in the following tested applications.

The application notes include recommended starting dilutions; optimal dilutions/concentrations should be determined by the end user.

**Applications** Functional Studies

SDS-PAGE

**Form** Liquid

#### Preparation and Storage

---

**Stability and Storage** Shipped on Dry Ice. Upon delivery aliquot. Store at -80°C. Avoid freeze / thaw cycle.

pH: 7.50

Constituents: 0.79% Tris HCl, 0.87% Sodium chloride, 0.31% Glutathione, 0.003% EDTA, 0.004% DTT, 0.002% PMSF, 25% Glycerol (glycerin, glycerine)

This product is an active protein and may elicit a biological response in vivo, handle with caution.

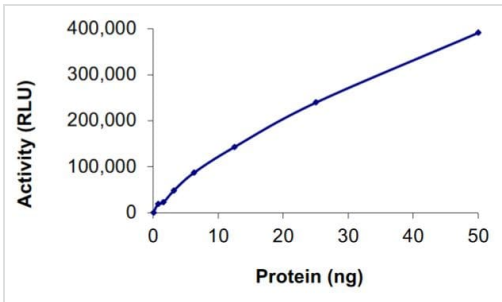
#### General Info

---

**Cellular localization** Ret: Membrane. KIF5B: Cytoplasm, cytoskeleton. Uniformly distributed between soma and neurites in hippocampal neurons.

#### Images

---



The specific activity was determined to be 49.5 nmol/min/mg in a kinase assay using Poly (4:1 Glu, Tyr) peptide substrate.

Functional Studies - Recombinant human Ret + KIF5B protein (Active) (ab268707)



SDS-PAGE analysis of ab268707.

SDS-PAGE - Recombinant human Ret + KIF5B protein (Active) (ab268707)

**Please note:** All products are "FOR RESEARCH USE ONLY. NOT FOR USE IN DIAGNOSTIC PROCEDURES"

### Our Abpromise to you: Quality guaranteed and expert technical support

- Replacement or refund for products not performing as stated on the datasheet
- Valid for 12 months from date of delivery
- Response to your inquiry within 24 hours
- We provide support in Chinese, English, French, German, Japanese and Spanish
- Extensive multi-media technical resources to help you
- We investigate all quality concerns to ensure our products perform to the highest standards

If the product does not perform as described on this datasheet, we will offer a refund or replacement. For full details of the Abpromise, please visit <https://www.abcam.com/abpromise> or contact our technical team.

## Terms and conditions

---

- Guarantee only valid for products bought direct from Abcam or one of our authorized distributors