

Product datasheet

Recombinant Human GTF3C5 protein ab160429

1 Image

Overview

<b>Product name</b>	Recombinant Human GTF3C5 protein
<b>Protein length</b>	Full length protein

Description

<b>Nature</b>	Recombinant
<b>Source</b>	Wheat germ
<b>Amino Acid Sequence</b>	
<b>Species</b>	Human

<b>Sequence</b>	<p>MAAEAADLGLGAAVPVELRRERRMVCVEYPGVVRDV          AKMLPTLGGEEGVS          RIYADPTKRELYFRPKDPYCHPVCANRFSTSSLLLRIR          KRTRRQKGVLG          TEAHSEVTFDMEILGIISTYKFQGMDFQYLAVHTEAG          GKHTSMYDKVL          MLRPEKEAFFHQELPLYPPPIFSRLDAPVDYFYPETQ          HREGYNNPPIS          GENLIGLSRARRPHNAIFVNFEEVVKQPLEAAAQT          WRRVCTNPVDRKV          EEELRKLFDIRPIWSRNAVKANISVHPDKLKVLLPFIAYY          MITGPWRSLW          IRFGYDPRKNPDAKIYQVLDFRIRCGMKHGYAPSDLPV          KAKRSTYNYSLP          ITVKKTSSQLVTMHDLKQGLGPSGTSGARKPASSKYK          LKDSVYIFREGAL          PPYRQMFYQLCDLNVEELQKIIHRNDGAENSCTERDG          WCLPKTSDELRTD          MSLMIRQTIRSKRPALFSSSAKADGGKEQLTYESGEDE          EDEEEEEEEEEED FKPSDGSSENEEMETEILDYV</p>
-----------------	---

<b>Amino acids</b>	1 to 519
<b>Tags</b>	GST tag N-Terminus

Specifications

Our [Abpromise guarantee](#) covers the use of **ab160429** in the following tested applications.

The application notes include recommended starting dilutions; optimal dilutions/concentrations should be determined by the end user.

<b>Applications</b>	Western blot ELISA
<b>Form</b>	Liquid
<b>Additional notes</b>	Protein concentration is above or equal to 0.05 mg/ml.

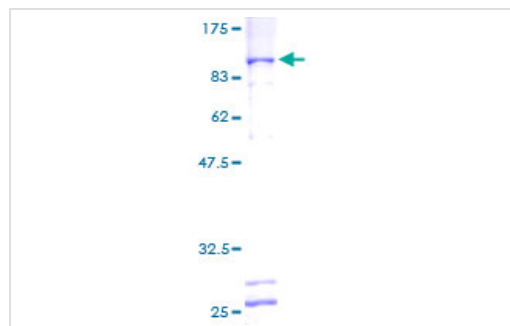
## Preparation and Storage

<b>Stability and Storage</b>	Shipped on dry ice. Upon delivery aliquot and store at -80°C. Avoid freeze / thaw cycles. pH: 8.00 Constituents: 0.31% Glutathione, 0.79% Tris HCl
------------------------------	--

## General Info

<b>Function</b>	Involved in RNA polymerase III-mediated transcription. Integral, tightly associated component of the DNA-binding TFIIIC2 subcomplex that directly binds tRNA and virus-associated RNA promoters.
<b>Sequence similarities</b>	Belongs to the TFIIIC subunit 5 family.
<b>Cellular localization</b>	Nucleus.

## Images



ab160429 on a 12.5% SDS-PAGE stained with Coomassie Blue.

SDS-PAGE - Recombinant Human GTF3C5 protein  
(ab160429)

**Please note:** All products are "FOR RESEARCH USE ONLY. NOT FOR USE IN DIAGNOSTIC PROCEDURES"

## Our Abpromise to you: Quality guaranteed and expert technical support

- Replacement or refund for products not performing as stated on the datasheet
- Valid for 12 months from date of delivery
- Response to your inquiry within 24 hours

- We provide support in Chinese, English, French, German, Japanese and Spanish
- Extensive multi-media technical resources to help you
- We investigate all quality concerns to ensure our products perform to the highest standards

If the product does not perform as described on this datasheet, we will offer a refund or replacement. For full details of the Abpromise, please visit <https://www.abcam.com/abpromise> or contact our technical team.

### **Terms and conditions**

---

- Guarantee only valid for products bought direct from Abcam or one of our authorized distributors