

Product datasheet

Recombinant Human HCE protein ab160166

1 Image

Overview

<b>Product name</b>	Recombinant Human HCE protein
<b>Protein length</b>	Full length protein

Description

<b>Nature</b>	Recombinant
<b>Source</b>	Wheat germ
<b>Amino Acid Sequence</b>	
<b>Species</b>	Human

<b>Sequence</b>	<p>MAHNKIPPRWLNCPRRGQPVAGRFLPLKTM LGPRYDS          QVAEENRFHPSML          SNYLKSLKVKMGLLVDLTNTSRFYDRNDIEKEGIKYKL          QCKGHGECPTT          ENTETFIRLCERFNERNPPELIGVHCTHGFNRTGFLICA          FLVEKMDWSIE          AAVATFAQARPPGYKGDYKELFRRYGDIEEAPPPPL          LPDWCFEDDEDE          DEDEDGKKESETGSSASFGKRRKERLKLGAIFLEGVT          VKGVTQVTTQPKL          GEVQQKCHQFCGWEGSGFPGAQPVSMDKQNIKLLDL          KPYKVSWKADGTRY          MMLIDGTNEVF MIDRDN SVFHVS NLEFPFRKDLRMHL          SNTLLDGEMIIDR          VNGQAVPRYLIDIIKFNSQPVGDCDFNVR LQCIEREIIS          PRHEKMKTGL          IDKTQEPFSVRNKPF DICTSRK LLEGNFAKEV SHEMD          GLIFQPTGKYKP          GRCDDILKWKPPSLNSVDFRLKITRMGGEGLLPQNVG          LLYVGGYERPFAQ          IKVTKELKQYDNKIIECKFENNSWVFM RQRTDKSFPNA          YNTAMAVCNSIS          NPVTKEMLFEFIDRCTAASQGQKRKHHLDPDTELMPP          PPPKRPHPLT</p>
-----------------	--

<b>Amino acids</b>	1 to 597
--------------------	----------

**Tags** proprietary tag N-Terminus

## Specifications

---

Our [Abpromise guarantee](#) covers the use of **ab160166** in the following tested applications.

The application notes include recommended starting dilutions; optimal dilutions/concentrations should be determined by the end user.

<b>Applications</b>	ELISA Western blot
<b>Form</b>	Liquid
<b>Additional notes</b>	Protein concentration is above or equal to 0.05 mg/ml.

## Preparation and Storage

---

<b>Stability and Storage</b>	Shipped on dry ice. Upon delivery aliquot and store at -80°C. Avoid freeze / thaw cycles. pH: 8.00 Constituents: 0.31% Glutathione, 0.79% Tris HCl
------------------------------	--

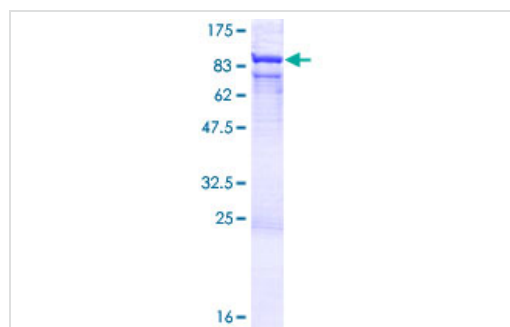
## General Info

---

<b>Function</b>	Bifunctional mRNA-capping enzyme exhibiting RNA 5'-triphosphatase activity in the N-terminal part and mRNA guanylyltransferase activity in the C-terminal part. Catalyzes the first two steps of cap formation: by removing the gamma-phosphate from the 5'-triphosphate end of nascent mRNA to yield a diphosphate end, and by transferring the gmp moiety of GTP to the 5'-diphosphate terminus.
<b>Tissue specificity</b>	Isoform 1 and isoform 4 (at a lesser extent) are expressed in cerebrum, cerebellum, thyroid, lung, heart, liver, kidney, spleen, large intestine, testis, skin and muscle.
<b>Sequence similarities</b>	In the N-terminal section; belongs to the non-receptor class of the protein-tyrosine phosphatase family. In the C-terminal section; belongs to the eukaryotic GTase family.
<b>Cellular localization</b>	Nucleus.

## Images

---



ab160166 on a 12.5% SDS-PAGE stained with Coomassie Blue.

SDS-PAGE - Recombinant Human HCE protein  
(ab160166)

**Please note:** All products are "FOR RESEARCH USE ONLY AND ARE NOT INTENDED FOR DIAGNOSTIC OR THERAPEUTIC USE"

### **Our Abpromise to you: Quality guaranteed and expert technical support**

---

- Replacement or refund for products not performing as stated on the datasheet
- Valid for 12 months from date of delivery
- Response to your inquiry within 24 hours
  
- We provide support in Chinese, English, French, German, Japanese and Spanish
- Extensive multi-media technical resources to help you
- We investigate all quality concerns to ensure our products perform to the highest standards

If the product does not perform as described on this datasheet, we will offer a refund or replacement. For full details of the Abpromise, please visit <https://www.abcam.com/abpromise> or contact our technical team.

### **Terms and conditions**

---

- Guarantee only valid for products bought direct from Abcam or one of our authorized distributors