

Product datasheet

Recombinant human HDAC11/HD11 protein ab80281

2 Images

Description

<b>Product name</b>	Recombinant human HDAC11/HD11 protein
<b>Biological activity</b>	Specific Activity: 1.2 pmol/min/ug. Assay condition : 25 mM Tris/Cl, pH8.0, 137 mM NaCl, 2.7 mM KCl, 1 mM MgCl <sub>2</sub> , and 0.1 mg/ml BSA, 20 uM BPS HDAC substrate, and 40 ng/ul HDAC11 / HD11. Incubation condition: 60 min at 37°C.
<b>Expression system</b>	Baculovirus
<b>Protein length</b>	Full length protein
<b>Animal free</b>	No
<b>Nature</b>	Recombinant
<b>Species</b>	Human

Specifications

Our [Abpromise guarantee](#) covers the use of **ab80281** in the following tested applications.

The application notes include recommended starting dilutions; optimal dilutions/concentrations should be determined by the end user.

<b>Applications</b>	Functional Studies SDS-PAGE
<b>Form</b>	Liquid
<b>Additional notes</b>	Previously labelled as HDAC11.

Preparation and Storage

<b>Stability and Storage</b>	Shipped on Dry Ice. Upon delivery aliquot. Store at -80°C. Avoid freeze / thaw cycle. pH: 8.00 Constituents: 0.395% Tris HCl, 0.05% Tween, 50% Glycerol (glycerin, glycerine), 0.58% Sodium chloride This product is an active protein and may elicit a biological response in vivo, handle with caution.
------------------------------	--------------------------------------------------------------------------------------------------------------------------------------------------------------------------------------------------------------------------------------------------------------------------------------------------------------------

General Info

<b>Function</b>	Responsible for the deacetylation of lysine residues on the N-terminal part of the core histones
-----------------	--------------------------------------------------------------------------------------------------

(H2A, H2B, H3 and H4). Histone deacetylation gives a tag for epigenetic repression and plays an important role in transcriptional regulation, cell cycle progression and developmental events. Histone deacetylases act via the formation of large multiprotein complexes.

**Tissue specificity**

Weakly expressed in most tissues. Strongly expressed in brain, heart, skeletal muscle, kidney and testis.

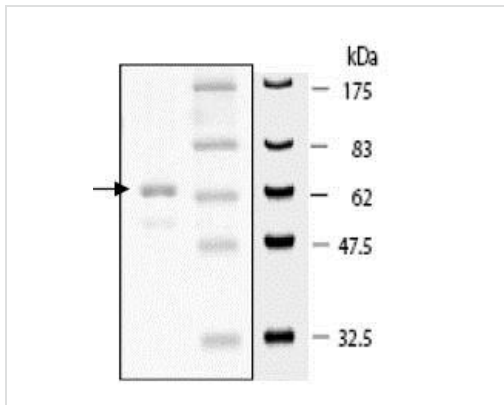
**Sequence similarities**

Belongs to the histone deacetylase family.

**Cellular localization**

Nucleus. Predominantly nuclear.

**Images**



SDS-PAGE showing ab80281 at approximately 66kDa (2µg).

SDS-PAGE - Recombinant human HDAC11/HD11 protein (ab80281)

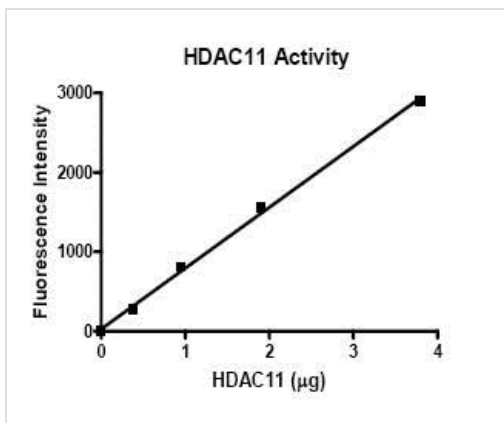


Image showing specific activity of ab80281.

Functional Studies - Recombinant human HDAC11/HD11 protein (ab80281)

**Please note:** All products are "FOR RESEARCH USE ONLY. NOT FOR USE IN DIAGNOSTIC PROCEDURES"

**Our Abpromise to you: Quality guaranteed and expert technical support**

- Replacement or refund for products not performing as stated on the datasheet
- Valid for 12 months from date of delivery

- Response to your inquiry within 24 hours
- We provide support in Chinese, English, French, German, Japanese and Spanish
- Extensive multi-media technical resources to help you
- We investigate all quality concerns to ensure our products perform to the highest standards

If the product does not perform as described on this datasheet, we will offer a refund or replacement. For full details of the Abpromise, please visit <https://www.abcam.com/abpromise> or contact our technical team.

### **Terms and conditions**

---

- Guarantee only valid for products bought direct from Abcam or one of our authorized distributors