

Product datasheet

Recombinant Human HIP1R protein ab131891

1 Image

Description

Product name	Recombinant Human HIP1R protein
Expression system	Wheat germ
Accession	O75146
Protein length	Full length protein
Animal free	No
Nature	Recombinant
Species	Human

Sequence

```

MNSIKNVPARVLSRRPGHSLEAEREQFDKTQAISISKAIN
TQEAPVKEKH
ARRIILGTHHEKGAFTFWSYAIGLPLPSSSILSWKFCHVLHK
VLRDGHPN
VLHDCQRYRSNIREIGDLWGHLHDRYGQLVNVYTKLLLT
KISFHLKHPQF
PAGLEVTDEVLEKAAGTDVNNIFQLTVEMFDYMDCELKLS
ESVFRQLNTA
IAVSQMSSGGCRLAPLIQVIQDCSHLYHYTVKLLFKLH
SCLPADTLQGHR
DRFHEQFHSLRNFFRRASDMLYFKRLIQIPRLPEGPPN
FLRASALAEHIK
PVVVIPEEAPEDEEPENLIEISTGPPAGEPVVVADLFD
QTFGPPNGSVKD
DRDLQIESLKREVEMLRSELEKIKLEAQRYAQLKSQV
NALEGELEEQRK
QKQKALVDNEQLRHELAQLRAAQLEGERSQGLREEA
ERKASATEARYNKL
KEKHSELVHVHAELLRKNADTAKQLTVTQQSQEEV
ARVKEQLAFQVEQVK
RESELKLEEKSDQLEKLRKRELEAKAGELARAQEAL
SHTEQSKSELSSRLD
TLSAEKDALSGAVRQREADLLAAQSLVRETEAALS
REQQRSSQEQGELQG
RLAERESQEQGLRQRLLEQFAVLRGAAAEEAAGIL
QDAVSKLDDPLHLRC
TSSPDYLVSRAQEALDAVSTLEEGHAQYLTSLAD
ASALVALTRFSHLAA

```

DTIINGGATSHLAPTPADRLIDTCRECGARALELMGQLQD
 QQALRHMQA
 SLVRTPLQGILQLGQELKPKSLDVRQEELGAVVDKEMAAT
 SAAIEDAVRR
 IEDMMNQARHASSGVKLEVNERILNSCTDLMKAIRLLVTT
 TSLQKEVE
 SGRGAATQQEFYAKNSRWTEGLISASKAVGWGATQLVEA
 ADKVVLTGKY
 EELVCSHEIAASTAQLVAASKVKANKHSPHLSRLQECSR
 TVNERAANVV
 ASTKSGQEQIEDRD TMDFSGLSLIKLKKQEMETQVRVLEL
 EKTLEAERM
 LGELRKQHYVLAGASGSPGEEVAIRPSTAPRSVTTKKPPL
 AQKPSVAPRQ DHQLDKKDGYPALVNY

Predicted molecular weight 146 kDa including tags
Amino acids 1 to 1068

Specifications

Our [Abpromise guarantee](#) covers the use of **ab131891** in the following tested applications.

The application notes include recommended starting dilutions; optimal dilutions/concentrations should be determined by the end user.

Applications Western blot
 SDS-PAGE
 ELISA

Form Liquid

Additional notes Protein concentration is above or equal to 0.05 ug/ul.

Preparation and Storage

Stability and Storage Shipped on dry ice. Upon delivery aliquot and store at -80°C. Avoid freeze / thaw cycles.
 pH: 8.00
 Constituents: 0.31% Glutathione, 0.79% Tris HCl

General Info

Function Component of clathrin-coated pits and vesicles, that may link the endocytic machinery to the actin cytoskeleton. Binds 3-phosphoinositides (via ENTH domain). May act through the ENTH domain to promote cell survival by stabilizing receptor tyrosine kinases following ligand-induced endocytosis.

Tissue specificity Brain, heart, kidney, pancreas, and liver, but not in lung or placenta.

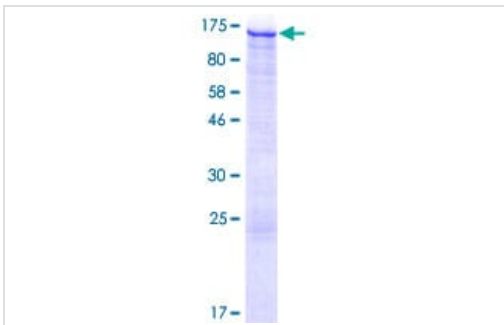
Sequence similarities Belongs to the SLA2 family.
 Contains 1 ENTH (epsin N-terminal homology) domain.
 Contains 1 I/LWEQ domain.

Domain Binds F-actin via the talin-like I/LWEQ domain.

Cellular localization Cytoplasm > perinuclear region. Endomembrane system. Cytoplasmic vesicle > clathrin-coated

vesicle membrane. Membrane-associated protein, mainly localized at the endocytic compartments and in the perinuclear region.

Images



12.5% SDS-PAGE stained with Coomassie Blue showing ab131891 at approximately 145.8 kDa.

SDS-PAGE - Recombinant Human HIP1R protein
(ab131891)

Please note: All products are "FOR RESEARCH USE ONLY. NOT FOR USE IN DIAGNOSTIC PROCEDURES"

Our Abpromise to you: Quality guaranteed and expert technical support

- Replacement or refund for products not performing as stated on the datasheet
- Valid for 12 months from date of delivery
- Response to your inquiry within 24 hours
- We provide support in Chinese, English, French, German, Japanese and Spanish
- Extensive multi-media technical resources to help you
- We investigate all quality concerns to ensure our products perform to the highest standards

If the product does not perform as described on this datasheet, we will offer a refund or replacement. For full details of the Abpromise, please visit <https://www.abcam.com/abpromise> or contact our technical team.

Terms and conditions

- Guarantee only valid for products bought direct from Abcam or one of our authorized distributors