

Product datasheet

Recombinant Human HLA E protein (Tagged)
 ab235846

1 Image

Description

Product name	Recombinant Human HLA E protein (Tagged)	
Purity	> 90 % SDS-PAGE.	
Expression system	Escherichia coli	
Accession	P13747	
Protein length	Protein fragment	
Animal free	No	
Nature	Recombinant	
Species	Human	
Sequence	GSHSLKYFHTSVSRPGRGEPFRFISVGWDDTQFVRFDND AASPRMVPRAP WMEQEGSEYWDRETRSARDTAQIFRVNLRRLRGYYNQSE AGSHTLQWMHG CELGPDRRFLRGYEQFAYDGKDYLTNEDLRSWTAVDTA AQISEQKSND SEAEHQRAYLEDTCVEWLHKYLEKGKETLLHLEPPKTHVT HHPISDHEAT LRCWALGFYPAEITLTWQQDGEHTQDTELVETRPAGDG TFQKWAAVVVP SGEEQRYTCHVQHEGLPEPVTLRWKPPASQPTIPI	
Predicted molecular weight	49 kDa including tags	
Amino acids	22 to 305	
Tags	His tag N-Terminus	
Additional sequence information	N-terminal 6xHis-SUMO-tagged.	

Specifications

Our [Abpromise guarantee](#) covers the use of **ab235846** in the following tested applications.

The application notes include recommended starting dilutions; optimal dilutions/concentrations should be determined by the end user.

Applications SDS-PAGE

Form Liquid

Preparation and Storage

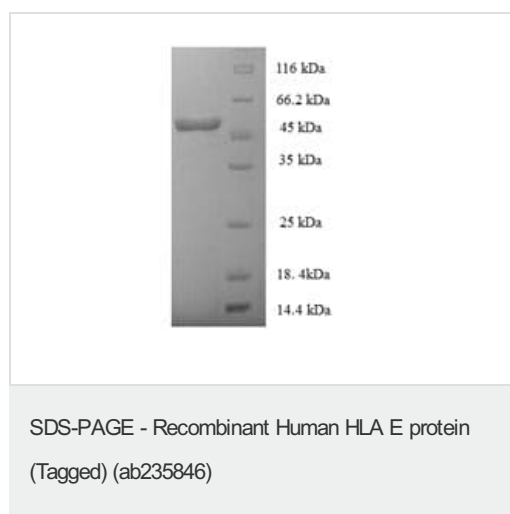
Stability and Storage Shipped at 4°C. Store at -20°C or -80°C. Avoid freeze / thaw cycle.
Constituents: Tris buffer, 50% Glycerol

General Info

Relevance HLA E belongs to the HLA class I heavy chain paralogues. This class I molecule is a heterodimer consisting of a heavy chain and a light chain (beta-2 microglobulin). The heavy chain is anchored in the membrane. HLA E binds a restricted subset of peptides derived from the leader peptides of other class I molecules.

Cellular localization Membrane; Single-pass type I membrane protein

Images



ab235846 analyzed by (Tris-Glycine gel) discontinuous SDS-PAGE (reduced) with 5% enrichment gel and 15% separation gel.

Please note: All products are "FOR RESEARCH USE ONLY. NOT FOR USE IN DIAGNOSTIC PROCEDURES"

Our Abpromise to you: Quality guaranteed and expert technical support

- Replacement or refund for products not performing as stated on the datasheet
- Valid for 12 months from date of delivery
- Response to your inquiry within 24 hours
- We provide support in Chinese, English, French, German, Japanese and Spanish
- Extensive multi-media technical resources to help you
- We investigate all quality concerns to ensure our products perform to the highest standards

If the product does not perform as described on this datasheet, we will offer a refund or replacement. For full details of the Abpromise, please visit <https://www.abcam.com/abpromise> or contact our technical team.

Terms and conditions

- Guarantee only valid for products bought direct from Abcam or one of our authorized distributors