

Product datasheet

Recombinant Human HMGCR protein ab132810

1 Image

Description

Product name	Recombinant Human HMGCR protein
Expression system	Wheat germ
Accession	P04035-2
Protein length	Full length protein
Animal free	No
Nature	Recombinant
Species	Human

Sequence

MLSRLFRMHGLFVASHPWEVIVGTVTLTICMMSMNMFTGN
 NKICGWNYES
 PKFEEDVLSSDIILITTRCIAILYYFQFNLRQLGSKYILGIAG
 LFTI
 FSSFVVFSTVVIHFLDKELTGLNEALPFFLLLIDLSRASTLAK
 FALSSNSQ
 DEVRENIARGMAILGPTFTLDALVECLVIGVGTMSGVRQLE
 IMCCFGCMS
 VLANYFVFMFTFFPACVSLVLELSRESREGRPWQLSHFAR
 VLEEEENKPN
 PVTQRVKMIMSLGLVLVHAHSRWIADPSPQNSTADTSKVS
 LGLDENVSKR
 IEPVSLWQFYLSKMISMIDIEQVITLSLALLLAVKYIFFEQTE
 TESTLSL
 KNPITSPVVTQKKVPDNCCRREPMLVRNNQKCDSEVEET
 GINRERKVEVI
 KPLVAETDTPNRATFVVGNSLLDTSSVLVTQEPEIELPR
 EPRPNEECLQ
 ILGNAEKGAKFLSDAEIIQLVNAKHIPAYKLETLMETHERGV
 SIRRQLLS
 KKLSEPSQLQYLPYRDYNYSLLGGGASSRVLADGMTRGP
 VVRLPRACDSA
 EVKAWLETSEGFVIKEAFDSTSRFARLQKLHTSIAGRNL
 IRFQSRSGD
 AMGMNMISKGTEKALSKLHEYFPEMQILAVSGNYCTDKKP
 AAINWIEGRG
 KSVVCEAVIPAKVVREVLKTTTEAMIEVNINKNLVGSAMAG
 SIGGYNAHA

ANVTAMACGQDAAQNVGSSNCITLMEASGPTNEDLYISC
TMPSIEIG
TVGGGTNLLPQQACLQMLGVQGACKDNPGENARQLARIV
CGTVMAGELSL
MAALAAGHLVKSHMIHNRSKINLQDLQGACTKKTA

Predicted molecular weight 118 kDa including tags
Amino acids 1 to 835

Specifications

Our [Abpromise guarantee](#) covers the use of **ab132810** in the following tested applications.

The application notes include recommended starting dilutions; optimal dilutions/concentrations should be determined by the end user.

Applications ELISA
SDS-PAGE
Western blot

Form Liquid

Additional notes

Preparation and Storage

Stability and Storage Shipped on dry ice. Upon delivery aliquot and store at -80°C. Avoid freeze / thaw cycles.
pH: 8.00
Constituents: 0.31% Glutathione, 0.79% Tris HCl

General Info

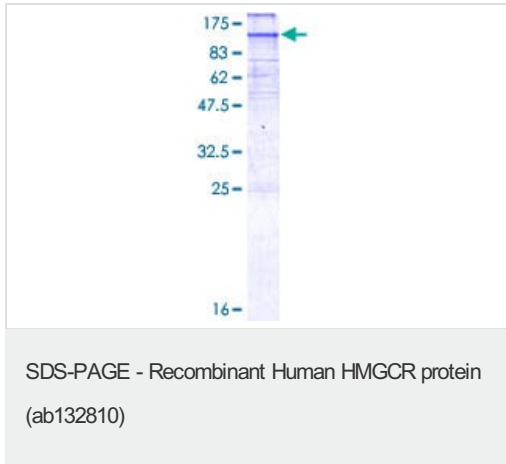
Function This transmembrane glycoprotein is involved in the control of cholesterol biosynthesis. It is the rate-limiting enzyme of sterol biosynthesis.

Pathway Metabolic intermediate biosynthesis; (R)-mevalonate biosynthesis; (R)-mevalonate from acetyl-CoA: step 3/3.

Sequence similarities Belongs to the HMG-CoA reductase family.

Cellular localization Endoplasmic reticulum membrane. Peroxisome membrane.

Images



12.5% SDS-PAGE analysis of ab132810 stained with Coomassie Blue.

Please note: All products are "FOR RESEARCH USE ONLY. NOT FOR USE IN DIAGNOSTIC PROCEDURES"

Our Abpromise to you: Quality guaranteed and expert technical support

- Replacement or refund for products not performing as stated on the datasheet
- Valid for 12 months from date of delivery
- Response to your inquiry within 24 hours

- We provide support in Chinese, English, French, German, Japanese and Spanish
- Extensive multi-media technical resources to help you
- We investigate all quality concerns to ensure our products perform to the highest standards

If the product does not perform as described on this datasheet, we will offer a refund or replacement. For full details of the Abpromise, please visit <https://www.abcam.com/abpromise> or contact our technical team.

Terms and conditions

- Guarantee only valid for products bought direct from Abcam or one of our authorized distributors