

Product datasheet

Recombinant Human HuR / ELAVL1 protein ab152360

1 Image

Description

Product name	Recombinant Human HuR / ELAVL1 protein
Purity	> 80 % SDS-PAGE.
Expression system	Wheat germ
Accession	Q15717
Protein length	Full length protein
Animal free	No
Nature	Recombinant
Species	Human
Sequence	<p>MSNGYEDHMAEDCRGDIGRTNLIVNYLPQNMTQDELRSLF SSIGEVESAK LIRDKVAGHSLGYGFVNYVTAKDAERAINTLNGLRLQSKTIK VSYARPSS EVIKDANLYISGLPRTMTQKDVEDMFSRFGRIINSRVLVDQ TTGLSRGVA FIRFDKRSEAEAAITSFNGHKPPGSSEPITVKFAANPNQNK NVALLSPLY HSPARRFGGPVHHQAQRFRFSPMGVDHMSGLSGVNVP GNASSGWCIFMY LGQDADEGILWQMFGPFGAVTNVKVIRDFNTNKCKGFGF VTMTNYEEAAM AIASLNGYRLGDKILQVSFKTNKSHK</p>
Predicted molecular weight	63 kDa including tags
Amino acids	1 to 362
Tags	GST tag N-Terminus

Specifications

Our [Abpromise guarantee](#) covers the use of **ab152360** in the following tested applications.

The application notes include recommended starting dilutions; optimal dilutions/concentrations should be determined by the end user.

Applications	ELISA
	Western blot
	SDS-PAGE

Form Liquid

Additional notes

Preparation and Storage

Stability and Storage Shipped on dry ice. Upon delivery aliquot and store at -80°C. Avoid freeze / thaw cycles.
pH: 8.00
Constituents: 0.31% Glutathione, 0.79% Tris HCl

General Info

Function Involved in 3'-UTR ARE-mediated MYC stabilization. Binds avidly to the AU-rich element in FOS and IL3/interleukin-3 mRNAs. In the case of the FOS AU-rich element, HUR binds to a core element of 27 nucleotides that contain AUUUA, AUUUUA and AUUUUUA motifs.

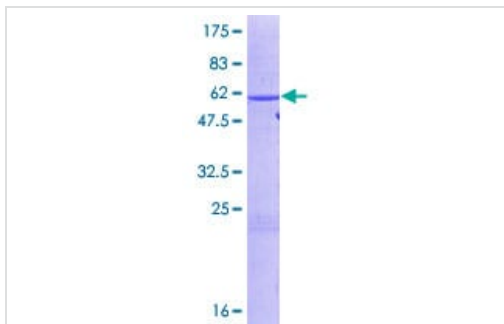
Tissue specificity Ubiquitous.

Sequence similarities Belongs to the RRM elav family.
Contains 3 RRM (RNA recognition motif) domains.

Post-translational modifications Methylated at Arg-217 by CARM1 in macrophages in response to LPS challenge.

Cellular localization Cytoplasm.

Images



12.5% SDS-PAGE analysis of ab152360 stained with Coomassie Blue.

SDS-PAGE - Recombinant Human HuR / ELAVL1 protein (ab152360)

Please note: All products are "FOR RESEARCH USE ONLY. NOT FOR USE IN DIAGNOSTIC PROCEDURES"

Our Promise to you: Quality guaranteed and expert technical support

- Replacement or refund for products not performing as stated on the datasheet
- Valid for 12 months from date of delivery

- Response to your inquiry within 24 hours
- We provide support in Chinese, English, French, German, Japanese and Spanish
- Extensive multi-media technical resources to help you
- We investigate all quality concerns to ensure our products perform to the highest standards

If the product does not perform as described on this datasheet, we will offer a refund or replacement. For full details of the Abpromise, please visit <https://www.abcam.com/abpromise> or contact our technical team.

Terms and conditions

- Guarantee only valid for products bought direct from Abcam or one of our authorized distributors