

Product datasheet

Recombinant Human ICAP-1 protein ab160408

1 Image

Overview

<b>Product name</b>	Recombinant Human ICAP-1 protein
<b>Protein length</b>	Full length protein

Description

<b>Nature</b>	Recombinant
<b>Source</b>	Wheat germ
<b>Amino Acid Sequence</b>	
<b>Species</b>	Human
<b>Sequence</b>	MFRKGKKRHSSSSSSQSSEISTKSKSV DSSLGGLSRSS TVASLDTDSTKSS GQSNNSDTCAEFRIKYVGAIEKLLSEGKGLEGLDLI NYDVAQQDGK LPFVPEEEEFIMGVSKYGIKVSTSDQYDLHRHALYLIIR MVCYDDGLGA GKSL LALKTTDASNEEYSLWVYQCNSLEQAQAICKVL STAFDSVLTSEKP
<b>Amino acids</b>	1 to 200
<b>Tags</b>	GST tag N-Terminus

Specifications

Our [Abpromise guarantee](#) covers the use of **ab160408** in the following tested applications.

The application notes include recommended starting dilutions; optimal dilutions/concentrations should be determined by the end user.

<b>Applications</b>	ELISA Western blot
<b>Form</b>	Liquid
<b>Additional notes</b>	Protein concentration is above or equal to 0.05 mg/ml. Previously labelled as ITGB1BP1.

Preparation and Storage

## Stability and Storage

Shipped on dry ice. Upon delivery aliquot and store at -80°C. Avoid freeze / thaw cycles.

pH: 8.00

Constituents: 0.31% Glutathione, 0.79% Tris HCl

## General Info

---

### Function

May play a role in the recruitment of beta-1 integrins to the focal contacts during integrin-dependent cell adhesion. Isoform 2 does not bind the integrin cytoplasmic domain-associated protein-1.

### Tissue specificity

Expressed in intestine, colon, testis, ovary, thymus, spleen and prostate.

### Sequence similarities

Contains 1 PID domain.

### Post-translational modifications

Isoform 1 appears to be phosphorylated. The degree of phosphorylation is regulated by integrin-dependent cell-matrix interaction.

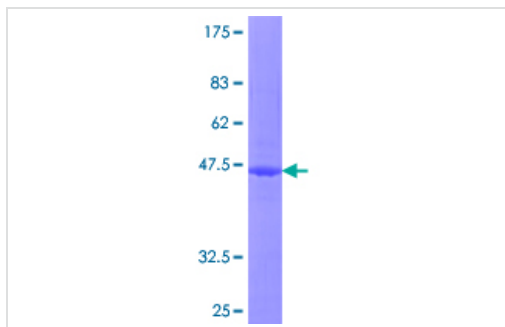
### Cellular localization

Cytoplasm.

---

## Images

---



ab160408 on a 12.5% SDS-PAGE stained with Coomassie Blue.

SDS-PAGE - Recombinant Human ICAP-1 protein  
(ab160408)

**Please note:** All products are "FOR RESEARCH USE ONLY. NOT FOR USE IN DIAGNOSTIC PROCEDURES"

## Our Abpromise to you: Quality guaranteed and expert technical support

---

- Replacement or refund for products not performing as stated on the datasheet
- Valid for 12 months from date of delivery
- Response to your inquiry within 24 hours
- We provide support in Chinese, English, French, German, Japanese and Spanish
- Extensive multi-media technical resources to help you
- We investigate all quality concerns to ensure our products perform to the highest standards

If the product does not perform as described on this datasheet, we will offer a refund or replacement. For full details of the Abpromise, please visit <https://www.abcam.com/abpromise> or contact our technical team.

## Terms and conditions

---

- Guarantee only valid for products bought direct from Abcam or one of our authorized distributors