

Product datasheet

Recombinant Human ICOS protein (Fc Chimera)  
 ab206441

1 Image

Description

<b>Product name</b>	Recombinant Human ICOS protein (Fc Chimera)	
<b>Purity</b>	> 90 % SDS-PAGE.	
<b>Endotoxin level</b>	< 1.000 Eu/μg	
<b>Expression system</b>	HEK 293 cells	
<b>Accession</b>	<a href="#">Q9Y6W8</a>	
<b>Protein length</b>	Protein fragment	
<b>Animal free</b>	No	
<b>Nature</b>	Recombinant	
<b>Species</b>	Human	
<b>Sequence</b>	EINGSANYEMFIFHNGGVQILCKYPDIVQQFKMQLLKGGQIL CDLTKTKG SGNTVSIKS LKFCHSQLSNNSVSFFLYNLDHSHANYFCNLSIFDPPP FKVTLTGGYLHIYESQLCCQ LKIEGRMDPKSCDKTHTCPPCPAPPELLG GPSVFLFPPKPKDTLMISRTPEVTCVVDVVS HEDPEVKFNWYVDGVEV HNAKTKPREEQYNSTYRVVSVLTVLHQDWLNGKEYKCKV S NKALPAPI EKTISKAKGQPREPQVYTLPPSRDELTKNQVSLTCLVKGF YPSDIAVEWE S NGQPENNYKTTPPVLDSDGSFFLYSKLTVDKSRWQQGNV FSCSVME ALHNHYTQKS LSLSPGK	
<b>Predicted molecular weight</b>	40 kDa including tags	
<b>Amino acids</b>	21 to 140	
<b>Additional sequence information</b>	The protein fragment is fused to Fc region of Human IgG1 at the C terminus.	

Specifications

Our [Abpromise guarantee](#) covers the use of **ab206441** in the following tested applications.

The application notes include recommended starting dilutions; optimal dilutions/concentrations should be determined by the end user.

<b>Applications</b>	SDS-PAGE
<b>Form</b>	Liquid
<b>Additional notes</b>	Protein may be diluted to $\geq 100 \mu\text{g/ml}$ in PBS + glycerol.

## Preparation and Storage

---

<b>Stability and Storage</b>	Shipped at 4°C. Store at -80°C. Avoid freeze / thaw cycle. pH: 8.00 Constituents: 0.63% Tris HCl, 0.64% Sodium chloride, 0.02% Potassium chloride, 20% Glycerol (glycerin, glycerine)
------------------------------	---

## General Info

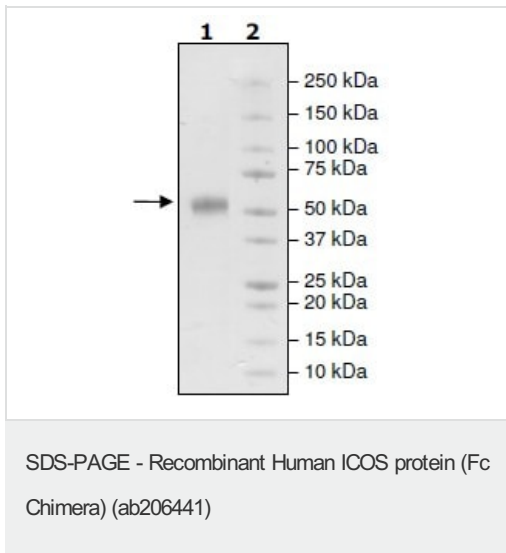
---

<b>Function</b>	Enhances all basic T-cell responses to a foreign antigen, namely proliferation, secretion of lymphokines, up-regulation of molecules that mediate cell-cell interaction, and effective help for antibody secretion by B-cells. Essential both for efficient interaction between T and B-cells and for normal antibody responses to T-cell dependent antigens. Does not up-regulate the production of interleukin-2, but superinduces the synthesis of interleukin-10. Prevents the apoptosis of pre-activated T-cells. Plays a critical role in CD40-mediated class switching of immunoglobulin isotypes.
<b>Tissue specificity</b>	Activated T-cells. Highly expressed on tonsillar T-cells, which are closely associated with B-cells in the apical light zone of germinal centers, the site of terminal B-cell maturation. Expressed at lower levels in thymus, lung, lymph node and peripheral blood leukocytes. Expressed in the medulla of fetal and newborn thymus.
<b>Involvement in disease</b>	Immunodeficiency, common variable, 1
<b>Sequence similarities</b>	Contains 1 Ig-like V-type (immunoglobulin-like) domain.
<b>Post-translational modifications</b>	N-glycosylated.
<b>Cellular localization</b>	Secreted and Cell membrane.

---

## Images

---



4-20% SDS-PAGE stained with Coomassie Blue.

Lane 1: ab206441 (3 µg)

Lane 2: Protein Marker

Note: This protein runs at a higher MW by SDS-PAGE due to glycosylation.

**Please note:** All products are "FOR RESEARCH USE ONLY. NOT FOR USE IN DIAGNOSTIC PROCEDURES"

### Our Abpromise to you: Quality guaranteed and expert technical support

- Replacement or refund for products not performing as stated on the datasheet
- Valid for 12 months from date of delivery
- Response to your inquiry within 24 hours
- We provide support in Chinese, English, French, German, Japanese and Spanish
- Extensive multi-media technical resources to help you
- We investigate all quality concerns to ensure our products perform to the highest standards

If the product does not perform as described on this datasheet, we will offer a refund or replacement. For full details of the Abpromise, please visit <https://www.abcam.com/abpromise> or contact our technical team.

### Terms and conditions

- Guarantee only valid for products bought direct from Abcam or one of our authorized distributors