

Product datasheet

Recombinant Human IL-10RB/IL-10R2 protein (Fc Chimera His Tag) ab227419

1 Image

Description

Product name	Recombinant Human IL-10RB/IL-10R2 protein (Fc Chimera His Tag)	
Purity	> 95 % SDS-PAGE. ab227419 was purified using conventional chromatography techniques.	
Endotoxin level	< 1.000 Eu/µg	
Expression system	Baculovirus infected insect cells	
Accession	Q08334	
Protein length	Protein fragment	
Animal free	No	
Nature	Recombinant	
Species	Human	
Sequence	MVPPPENVRMNSVNFKNILQWESPAFAKGNLTFTAQYLS YRIFQDKCMNT TLTECDFSSLSKYGDHTLRVRAEFADEHSDWVNITFCPVD DTIIGPPGMQ VEVLADSLHMRFLAPKIENEYETWTMKNVYNSWTVNVQY WKNGTDEKFQI TPQYDFEVLRLNLEPWTTYCVQVRGFLPDRNKAGEWSEP VCEQTTHDETVP SLEPKSCDKTHTCPPCPAPELLGGPSVFLFPPKPKDTLMI SRTPEVTCVV VDVSHEDPEVKFNWYVDGVEVHNAKTKPREEQYNSTYR VVSVLTVLHQDW LNGKEYKCKVSNKALPAPIEKTISKAKGQPREPQVYTLPP SRDELTKNQV SLTCLVKGFYPSDIAVEWESNGQPENNYKTTTPVLDSGDG SFFLYSKLTVD KSRWQQGNVFCFSVMHEALHNHYTQKSLSLSPGKHHHHH HH	
Predicted molecular weight	51 kDa including tags	
Amino acids	20 to 220	
Tags	His tag C-Terminus	

Additional sequence information Extracellular domain fused to hlgG-His-tag at C-terminal (NP_000619).

Specifications

Our [Abpromise guarantee](#) covers the use of **ab227419** in the following tested applications.

The application notes include recommended starting dilutions; optimal dilutions/concentrations should be determined by the end user.

Applications	SDS-PAGE
Form	Liquid
Additional notes	Previously labelled as IL10RB.

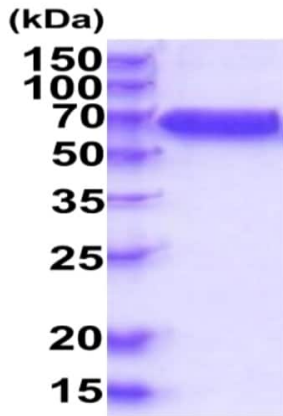
Preparation and Storage

Stability and Storage	Shipped at 4°C. Store at +4°C short term (1-2 weeks). Upon delivery aliquot. Store at -20°C or -80°C. Avoid freeze / thaw cycle. pH: 7.40 Constituents: PBS, 10% Glycerol (glycerin, glycerine)
------------------------------	-----------------------------------------------------------------------------------------------------------------------------------------------------------------------------------------------------------

General Info

Function	Shared cell surface receptor required for the activation of five class 2 cytokines: IL10, IL22, IL26, IL28, and IL29.
Involvement in disease	Defects in IL10RB are the cause of inflammatory bowel disease type 25 (IBD25) [MIM:612567]. It is a chronic, relapsing inflammation of the gastrointestinal tract with a complex etiology. It is subdivided into Crohn disease and ulcerative colitis phenotypes. Crohn disease may affect any part of the gastrointestinal tract from the mouth to the anus, but most frequently it involves the terminal ileum and colon. Bowel inflammation is transmural and discontinuous; it may contain granulomas or be associated with intestinal or perianal fistulas. In contrast, in ulcerative colitis, the inflammation is continuous and limited to rectal and colonic mucosal layers; fistulas and granulomas are not observed. Both diseases include extraintestinal inflammation of the skin, eyes, or joints.
Sequence similarities	Belongs to the type II cytokine receptor family. Contains 2 fibronectin type-III domains.
Cellular localization	Membrane.

Images



15% SDS-PAGE analysis of 3 µg ab227419.

MW 50-70 kDa (SDS-PAGE under reducing conditions).

SDS-PAGE - Recombinant Human IL-10RB/IL-10R2
protein (Fc Chimera His Tag) (ab227419)

Please note: All products are "FOR RESEARCH USE ONLY. NOT FOR USE IN DIAGNOSTIC PROCEDURES"

Our Abpromise to you: Quality guaranteed and expert technical support

- Replacement or refund for products not performing as stated on the datasheet
- Valid for 12 months from date of delivery
- Response to your inquiry within 24 hours
- We provide support in Chinese, English, French, German, Japanese and Spanish
- Extensive multi-media technical resources to help you
- We investigate all quality concerns to ensure our products perform to the highest standards

If the product does not perform as described on this datasheet, we will offer a refund or replacement. For full details of the Abpromise, please visit <https://www.abcam.com/abpromise> or contact our technical team.

Terms and conditions

- Guarantee only valid for products bought direct from Abcam or one of our authorized distributors