

Product datasheet

Recombinant human IL-15 protein ab174074

1 Image

Description

<b>Product name</b>	Recombinant human IL-15 protein	
<b>Biological activity</b>	The bio-activity was determined by dose-dependent stimulation of the proliferation of mouse CTLL-2 cells. The ED <sub>50</sub> <0.5ng/ml, corresponding to a specific activity of >2X10 <sup>6</sup> Unit/mg.	
<b>Purity</b>	> 95 % SDS-PAGE.	
<b>Endotoxin level</b>	< 1.000 Eu/μg	
<b>Expression system</b>	HEK 293 cells	
<b>Accession</b>	<a href="#">P40933</a>	
<b>Protein length</b>	Full length protein	
<b>Animal free</b>	No	
<b>Nature</b>	Recombinant	
<b>Species</b>	Human	
<b>Sequence</b>	NWNVISDLKKIEDLIQSMHIDATLYTESDVHPSCKVTAMK CFLLELQVI SLESGDASIHDTVENLILANNSLSSNGNVTESGCKECEEL EEKNIKEFL QSFVHIVQMFINTS	
<b>Predicted molecular weight</b>	13 kDa	
<b>Amino acids</b>	49 to 162	
<b>Additional sequence information</b>	Accession# AAH18149	

Specifications

Our [Abpromise guarantee](#) covers the use of **ab174074** in the following tested applications.

The application notes include recommended starting dilutions; optimal dilutions/concentrations should be determined by the end user.

<b>Applications</b>	Functional Studies SDS-PAGE
<b>Form</b>	Lyophilized

Preparation and Storage

## Stability and Storage

Shipped at 4°C. Store at 4°C prior to reconstitution. Store at -20°C or -80°C. Avoid freeze / thaw cycle.

Information available upon request.

This product is an active protein and may elicit a biological response in vivo, handle with caution.

## Reconstitution

It is recommended to reconstitute the lyophilized product in 10 µl sterile deionized water to a final concentration of 1 mg/ml. Solubilize for 30 to 60 minutes at room temperature with occasional gentle mixing. Carrier protein (0.1% HSA or BSA) is strongly recommended for further dilution and long term storage.

## General Info

### Function

Cytokine that stimulates the proliferation of T-lymphocytes. Stimulation by IL-15 requires interaction of IL-15 with components of IL-2R, including IL-2R beta and probably IL-2R gamma but not IL-2R alpha.

### Tissue specificity

Most abundant in placenta and skeletal muscle. It is also detected in the heart, lung, liver and kidney. IL15-S21AA is preferentially expressed in tissues such as testis and thymus.

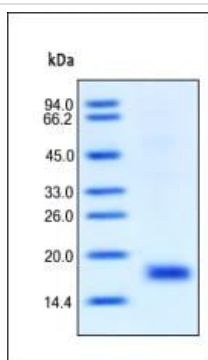
### Sequence similarities

Belongs to the IL-15/IL-21 family.

### Cellular localization

Secreted and Cytoplasm. Nucleus. IL15-S21AA is not secreted, but rather is stored intracellularly, appearing in the nucleus and cytoplasmic components.

## Images



SDS-PAGE - Recombinant human IL-15 protein  
(ab174074)

The purity of ab174074 (predicted MW of 13kDa) was determined by SDS-PAGE and staining overnight with Coomassie Blue.

DTT reduced ab174074 migrates as 16 kDa protein due to glycosylation.

**Please note:** All products are "FOR RESEARCH USE ONLY. NOT FOR USE IN DIAGNOSTIC PROCEDURES"

## Our Abpromise to you: Quality guaranteed and expert technical support

- Replacement or refund for products not performing as stated on the datasheet
- Valid for 12 months from date of delivery
- Response to your inquiry within 24 hours

- We provide support in Chinese, English, French, German, Japanese and Spanish
- Extensive multi-media technical resources to help you
- We investigate all quality concerns to ensure our products perform to the highest standards

If the product does not perform as described on this datasheet, we will offer a refund or replacement. For full details of the Abpromise, please visit <https://www.abcam.com/abpromise> or contact our technical team.

### **Terms and conditions**

---

- Guarantee only valid for products bought direct from Abcam or one of our authorized distributors