

Product datasheet

Recombinant Human IPPK/IPK1 protein ab163874

1 Image

Overview

Product name	Recombinant Human IPPK/IPK1 protein
Protein length	Full length protein

Description

Nature	Recombinant
Source	Wheat germ
Amino Acid Sequence	
Species	Human
Sequence	<p>MEEGKMDENEWGYHGEGNKSLVVAHAQRCVVLRFLLKFPNRRKKTSEEIFQHLQNIWDFGKNVMKEFLGENYVHYGEVVQLPLEFVKQLCLKIQSERPESRLCDKDLDTLSGYAMCLPNLTRLQTYRFAEHRPILCVEIKPKCGFIPFSSDVTHEMKHKVCRYCMHQHLKVATGKWKQISKYCPDLYSGNKQRMHFALKSLLQEAQNNLKIFKNGELYGCKDARSPVADWSELAHHLK PFFFPSNGLASGPHCTRAVIRELVHVITRVLLSGSDKGRAGTLSPGLGPQGPRVCEASPFSLSLRCQGKNTPERSGLPKGCLLYKTLQVQMLDLLDIEGLYPLYNRVERYLEEFPEERKTLQIDGPYDEAFYQKLLDLSTEDDGTVAFALTKVQQYRVAMTAKDCSIMIALSPCLQDASSDQRPVVPSSRSRFAFSVSVLDLCLKPYESIPHQYKLDGKIMNYYSKTVRAKDNAVMSTRFKESDCTLVLLHKV</p>
Amino acids	1 to 491
Tags	GST tag N-Terminus

Specifications

Our [Abpromise guarantee](#) covers the use of **ab163874** in the following tested applications.

The application notes include recommended starting dilutions; optimal dilutions/concentrations should be determined by the end user.

Applications	ELISA Western blot
Form	Liquid
Additional notes	Protein concentration is above or equal to 0.05 mg/ml. This product was previously labelled as IPPK

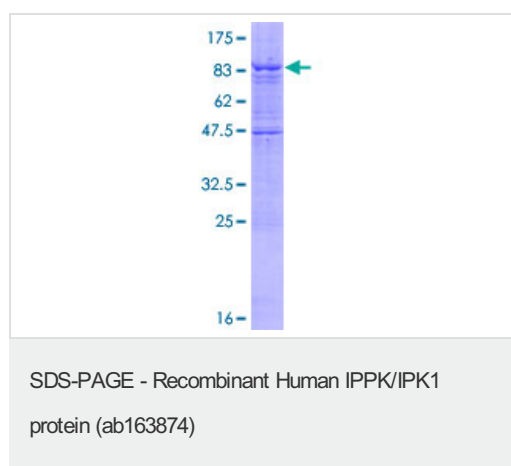
Preparation and Storage

Stability and Storage	Shipped on dry ice. Upon delivery aliquot and store at -80°C. Avoid freeze / thaw cycles. pH: 8.00 Constituents: 0.31% Glutathione, 0.79% Tris HCl
------------------------------	--

General Info

Function	Phosphorylates Ins(1,3,4,5,6)P5 at position 2 to form Ins(1,2,3,4,5,6)P6 (InsP6 or phytate). InsP6 is involved in many processes such as mRNA export, non-homologous end-joining, endocytosis, ion channel regulation. It also protects cells from TNF-alpha-induced apoptosis.
Tissue specificity	Ubiquitously expressed, with high expression in heart, brain, testis and placenta.
Sequence similarities	Belongs to the IPK1 type 2 family.
Domain	The EXKPK motif is conserved in inositol-pentakisphosphate 2-kinases of both family 1 and 2.
Cellular localization	Cytoplasm. Nucleus.

Images



ab163874 on a 12.5% SDS-PAGE stained with Coomassie Blue.

Please note: All products are "FOR RESEARCH USE ONLY AND ARE NOT INTENDED FOR DIAGNOSTIC OR THERAPEUTIC USE"

Our Abpromise to you: Quality guaranteed and expert technical support

- Replacement or refund for products not performing as stated on the datasheet
- Valid for 12 months from date of delivery
- Response to your inquiry within 24 hours

- We provide support in Chinese, English, French, German, Japanese and Spanish
- Extensive multi-media technical resources to help you
- We investigate all quality concerns to ensure our products perform to the highest standards

If the product does not perform as described on this datasheet, we will offer a refund or replacement. For full details of the Abpromise, please visit <https://www.abcam.com/abpromise> or contact our technical team.

Terms and conditions

- Guarantee only valid for products bought direct from Abcam or one of our authorized distributors