

Product datasheet

Recombinant Human IQCH protein ab163884

1 Image

Overview

<b>Product name</b>	Recombinant Human IQCH protein
<b>Protein length</b>	Full length protein

Description

<b>Nature</b>	Recombinant
<b>Source</b>	Wheat germ
<b>Amino Acid Sequence</b>	
<b>Species</b>	Human

<b>Sequence</b>	<p>MAQNTENHDPVGSILIQIHEDLYQLKEKLTKFSPEEKGE          TLDIQSLETAI          KRTEVGLRIHIEKYLNVVNQNVLTTSVNDESLYTPQASK          WLLPTVIDQKS          FIFPQESEGTFWQPQRQHSSSLPVFPRAKIKVSKLIKG          SNISLTVLPSS          HCTDPYFTPIPVLQADAHKGILSMIERGLIPPTARITFQN          PPITPRAAPL          HSFDEARKIPTVATFTIPREPPPSPAEVKFFPKKQRSK          GKSRRSRGHHDR          KAMKVKTPLRALKSLWDYDFLYDGVINDTAPDFLAFK          EHFSLAWGGIFS          LLEHVEKFLRNyaiPEVKIKGNNLVALLPEFELTNKLTRY          DLLSVLEDPA          HVQMLINLPGQRYKGQDGNSEAAMKIQATWKCYKARK          FFLFYRQQKWASG          VIAIAWLLYCHKTRLKKILKESRQRHLENFRIRAKHLAAN          WNRIRTSRRT          IIHIPSLGYSQPVREHIADFNTQQNMQLGRLCDILDANVN          VMYCSHHMN          DELVLYYKKILSLHAAVKSGNLEDRSDLQDRFKIITPEA          VNIFPKHHMCL          ATHLMYSPKAIKRIKNLIRGTEAYVSGLLHRDDLAVADM          LDIPILGSEP          ELAHLYSTKSGGKRVFDSANVAVPPGYDIYSQQQMIE          QLSQLITDHLQI</p>
-----------------	--

QRWLFKMDSEFRGNGTAFCDIPSYLKCYKWVLKESS  
RYGLEDWRKKWAQE  
PALVKISEELAGILAQHAQPVNEKRFPPTWRKFLQTFLS  
QGGVIEAFPPAD  
NVTNLTVDMLEPNKGISVLSTGDQLHAESPFISSTTV  
PQTSVDPQVLT  
YLCQIGKACRMRDVVGYFSIDLVTFIDPSTLEQQVWA  
TGLNLAYSQDLA  
LTQLTLYLTNGHLDCSLSTLEVPRFVPKERKTKCMSA  
LSMPMLATSRYA  
VMTTQLRHSNLSLVFHYVFLQICRAHGIGYDLEERQGT  
VFILYEHLKRHK  
LGMLTIGEDLQGVLMTFARHLFIIHQEISAPNMQGETNF  
KTTIADIETIL RVTKENKMRFEQQSKDDKNLSKPKK

**Amino acids** 1 to 1027  
**Tags** GST tag N-Terminus

### Specifications

---

Our [Abpromise guarantee](#) covers the use of **ab163884** in the following tested applications.

The application notes include recommended starting dilutions; optimal dilutions/concentrations should be determined by the end user.

**Applications** ELISA  
Western blot

**Form** Liquid

**Additional notes** Protein concentration is above or equal to 0.05 mg/ml.

### Preparation and Storage

---

**Stability and Storage** Shipped on dry ice. Upon delivery aliquot and store at -80°C. Avoid freeze / thaw cycles.  
pH: 8.00  
Constituents: 0.31% Glutathione, 0.79% Tris HCl

### General Info

---

**Function** May play a regulatory role in spermatogenesis.

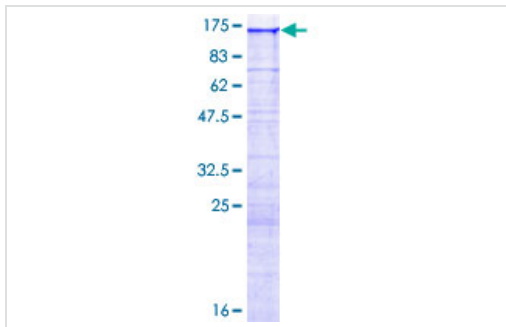
**Tissue specificity** Expressed in fetal and adult testis, in germ cells but not somatic cells.

**Sequence similarities** Contains 1 IQ domain.

---

### Images

---



ab163884 on a 12.5% SDS-PAGE stained with Coomassie Blue.

SDS-PAGE - Recombinant Human IQCH protein  
(ab163884)

**Please note:** All products are "FOR RESEARCH USE ONLY AND ARE NOT INTENDED FOR DIAGNOSTIC OR THERAPEUTIC USE"

### Our Abpromise to you: Quality guaranteed and expert technical support

---

- Replacement or refund for products not performing as stated on the datasheet
- Valid for 12 months from date of delivery
- Response to your inquiry within 24 hours
- We provide support in Chinese, English, French, German, Japanese and Spanish
- Extensive multi-media technical resources to help you
- We investigate all quality concerns to ensure our products perform to the highest standards

If the product does not perform as described on this datasheet, we will offer a refund or replacement. For full details of the Abpromise, please visit <https://www.abcam.com/abpromise> or contact our technical team.

### Terms and conditions

---

- Guarantee only valid for products bought direct from Abcam or one of our authorized distributors