

Product datasheet

# Recombinant Human Iroquois homeobox protein 3 ab164005

1 Image

Overview

<b>Product name</b>	Recombinant Human Iroquois homeobox protein 3
<b>Protein length</b>	Full length protein

Description

<b>Nature</b>	Recombinant
<b>Source</b>	Wheat germ
<b>Amino Acid Sequence</b>	
<b>Species</b>	Human
<b>Sequence</b>	<p>MSFPQLGYQYIRPLYPSERPGAAGGSGGSAGARGGLG  AGASELNASGSLS  NVLSSVYGAPYAAAAAAAAAAQGYGAFLPYAAELPIFPQ  LGAQYELKDSPG  VQHPAAAAFAFHPHPAFYPYGQYQFGDPSRPKNATR  ESTSTLKAWLNEHR  KNPYPTKGEKIMLAIITKMTLTQVSTWTFANARRRLKKN  KMTWAPRSRTD  EEGNAYGSEREEEEDDEEDGKRELELEEEELGGE  EEDTGGEGLADDDE  DEEIDLENLDGAATEPELSLAGAARRDGLGLGPISDS  KNSDSEDSSEGL  EDRPLPVLSLAPAPPVAVASPSLSPPPVSLDPCAPA  PAPASALQKPKIW  SLAETATSPDNPRRSPPGAGGSPPGAAVAPSALQLS  PAAAAAAHRLVSA  PLGKFPAWTNRPFPGPPPGRPHPLSLLGSAPPHLLG  LPGAAGHPAAAAA  FARPAEPEGGTDRCSALEVEKLLKTAFAQPVPRRPQ  NHLDAALVLSALSS S</p>
<b>Amino acids</b>	1 to 501
<b>Tags</b>	proprietary tag N-Terminus

## Specifications

---

Our [Abpromise guarantee](#) covers the use of **ab164005** in the following tested applications.

The application notes include recommended starting dilutions; optimal dilutions/concentrations should be determined by the end user.

<b>Applications</b>	Western blot ELISA
<b>Form</b>	Liquid
<b>Additional notes</b>	Protein concentration is above or equal to 0.05 mg/ml.

## Preparation and Storage

---

<b>Stability and Storage</b>	Shipped on dry ice. Upon delivery aliquot and store at -80°C. Avoid freeze / thaw cycles. pH: 8.00 Constituents: 0.31% Glutathione, 0.79% Tris HCl
------------------------------	--

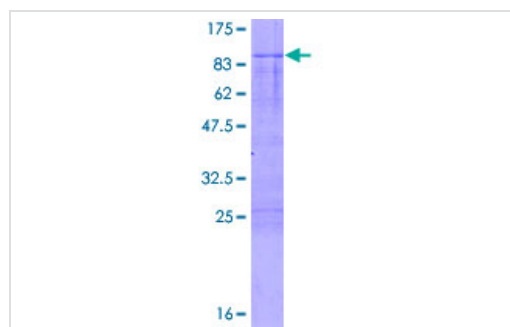
## General Info

---

<b>Function</b>	Transcription factor. Involved in SHH-dependent neural patterning. Together with NKX2-2 and NKX6-1 acts to restrict the generation of motor neurons to the appropriate region of the neural tube. Belongs to the class I proteins of neuronal progenitor factors, which are repressed by SHH signals. Involved in the transcriptional repression of MNX1 in non-motor neuron cells.
<b>Sequence similarities</b>	Belongs to the TALE/IRO homeobox family. Contains 1 homeobox DNA-binding domain.
<b>Cellular localization</b>	Nucleus.

## Images

---



ab164005 on a 12.5% SDS-PAGE stained with Coomassie Blue.

SDS-PAGE - Recombinant Human Iroquois  
homeobox protein 3 (ab164005)

**Please note:** All products are "FOR RESEARCH USE ONLY AND ARE NOT INTENDED FOR DIAGNOSTIC OR THERAPEUTIC USE"

## Our Abpromise to you: Quality guaranteed and expert technical support

---

- Replacement or refund for products not performing as stated on the datasheet

- Valid for 12 months from date of delivery
- Response to your inquiry within 24 hours
  
- We provide support in Chinese, English, French, German, Japanese and Spanish
- Extensive multi-media technical resources to help you
- We investigate all quality concerns to ensure our products perform to the highest standards

If the product does not perform as described on this datasheet, we will offer a refund or replacement. For full details of the Abpromise, please visit <https://www.abcam.com/abpromise> or contact our technical team.

### **Terms and conditions**

---

- Guarantee only valid for products bought direct from Abcam or one of our authorized distributors