

Product datasheet

Recombinant human ITK/EMT protein (Active)  
ab204156

5 Images

Description

|                            |   |
|----------------------------|---|
| <b>Product name</b>        | Recombinant human ITK/EMT protein (Active)  |
| <b>Biological activity</b> | The specific activity of ab204156 was determined to be 50 nmol/min/mg.  |
| <b>Purity</b>              | > 80 % Densitometry.  |
| <b>Expression system</b>   | Baculovirus infected Sf9 cells  |
| <b>Accession</b>           | <a href="#">Q08881</a>  |
| <b>Protein length</b>      | Full length protein   |
| <b>Animal free</b>         | No  |
| <b>Nature</b>              | Recombinant   |
| <b>Species</b>             | Human   |
| <b>Sequence</b>            | <p>MNNFILLEELIKKSQQKRRTSPSNFKVRRFFVLTKASLA<br/>         YFEDRHGKKRT<br/>         LKGSIELSRIKCVEIVKSDISIPCHYKYPFQVVHDNYLLYV<br/>         FAPDRESRQ<br/>         RWVLALKEETRNNNSLVPKYHPNFWMDGKWRCSSQ<br/>         LEKLATGCAQYDPTK<br/>         NASKKPLPPTPEDNRRPLWEPEETVVIALYDYQTNDP<br/>         QELALRRNEEYCL<br/>         LDSSEIHWWRVQDRNGHEGYVPSSYLVEKSPNNLETY<br/>         EWYNKSISRDKAE<br/>         KLLLDTGKEGAFMVRDSRTAGTYTVSVFTKAVVSENN<br/>         PCIKHYHIKETND<br/>         NPKRYVAEKYVFDSIPLLINYHQHNGGGLVTRLRYPVC<br/>         FGRQKAPVT<br/>         AGLRYGKWVIDPSELTFVQEIGSGQFGLVHLGYWLNK<br/>         DKVAIKTIREGAM<br/>         SEEDFIEEAEVMMKLSHPKLVQLYGVLCLEQAPICLVFE<br/>         FMEHGCLSDYLR<br/>         TQRGLFAAETLLGMCLDVCEGMAYLEEACVIHRDLAA<br/>         RNCLVGENQVIKV<br/>         SDFGMTRFVLDQYTSSTGTGKFPVKWASPEVFSFSRY<br/>         SSKSDVWSFGVLM</p> |

WEVFSEGKIPYENRSNSEVVEDISTGFRLYKPRLASTH  
VYQIMNHCWKER PEDRPAFSRLLRQLAEIAESGL

|  |                        |
|--|------------------------|
| <b>Predicted molecular weight</b>      | 108 kDa including tags |
| <b>Amino acids</b>                     | 1 to 620               |
| <b>Tags</b>                            | GST tag N-Terminus     |
| <b>Additional sequence information</b> | NM_005546              |

## Specifications

---

Our [Abpromise guarantee](#) covers the use of **ab204156** in the following tested applications.

The application notes include recommended starting dilutions; optimal dilutions/concentrations should be determined by the end user.

|                         |                                |
|-------------------------|--------------------------------|
| <b>Applications</b>     | SDS-PAGE<br>Functional Studies |
| <b>Form</b>             | Liquid                         |
| <b>Additional notes</b> | Previously labelled as ITK.    |

## Preparation and Storage

---

|                              |  |
|------------------------------|--|
| <b>Stability and Storage</b> | Shipped on Dry Ice. Upon delivery aliquot. Store at -80°C. Avoid freeze / thaw cycle.<br>pH: 7.5<br>Constituents: 0.79% Tris HCl, 0.88% Sodium chloride, 0.31% Glutathione, 0.003% EDTA, 0.004% DTT, 0.002% PMSF, 25% Glycerol<br>This product is an active protein and may elicit a biological response in vivo, handle with caution. |
|------------------------------|--|

## General Info

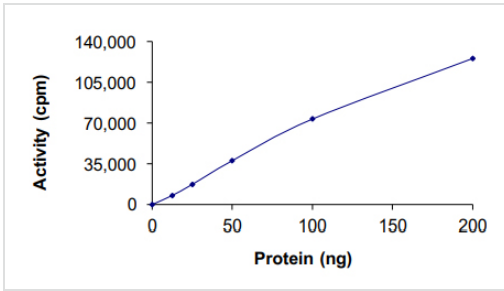
---

|                               |   |
|-------------------------------|---|
| <b>Function</b>               | Plays a role in T-cell proliferation and differentiation.   |
| <b>Tissue specificity</b>     | T-cell lines and natural killer cell lines.   |
| <b>Involvement in disease</b> | Defects in ITK are the cause of lymphoproliferative syndrome EBV-associated autosomal type 1 (LPSA1) [MIM:613011]. LPSA1 is a rare immunodeficiency characterized by extreme susceptibility to infection with Epstein-Barr virus (EBV). Inadequate immune response to EBV can have a fatal outcome. Clinical features include splenomegaly, lymphadenopathy, anemia, thrombocytopenia, pancytopenia, recurrent infections. There is an increased risk for lymphoma. |
| <b>Sequence similarities</b>  | Belongs to the protein kinase superfamily. Tyr protein kinase family. TEC subfamily.<br>Contains 1 Btk-type zinc finger.<br>Contains 1 PH domain.<br>Contains 1 protein kinase domain.<br>Contains 1 SH2 domain.<br>Contains 1 SH3 domain.  |
| <b>Cellular localization</b>  | Cell membrane. Localizes to cell surface receptors in the plasma membrane after stimulation with respective receptors (TCR, CD28, CD2) in T-cells.  |

---

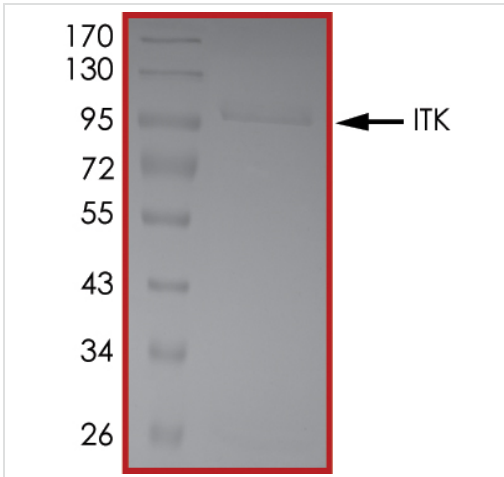
## Images

---



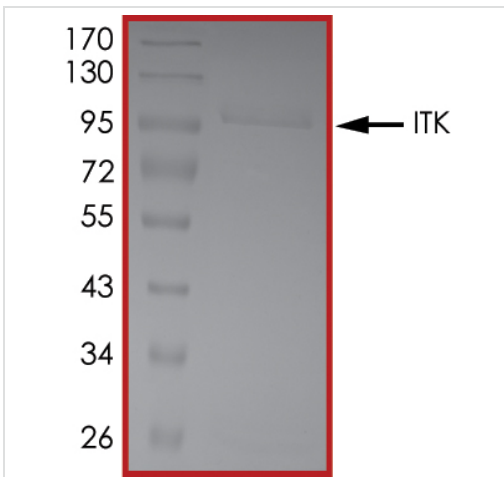
The specific activity of ITK/EMT (ab204156) was determined to be 50 nmol/min/mg as per activity assay protocol

Functional Studies - Recombinant human ITK/EMT protein (Active) (ab204156)



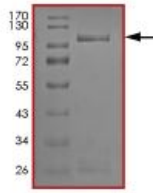
SDS PAGE analysis of ab204156

SDS-PAGE - Recombinant human ITK/EMT protein (Active) (ab204156)



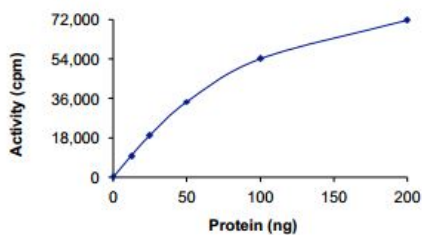
SDS PAGE analysis of ab204156

SDS-PAGE - Recombinant human ITK/EMT protein (Active) (ab204156)



SDS-PAGE - Recombinant human ITK/EMT protein (Active) (ab204156)

SDS-PAGE analysis of ab204156 which was determined to be >80% pure by densitometry.



Functional Studies - Recombinant human ITK/EMT protein (Active) (ab204156)

The specific activity of ab204156 was determined to be 50 nmol/min/mg.

**Please note:** All products are "FOR RESEARCH USE ONLY. NOT FOR USE IN DIAGNOSTIC PROCEDURES"

### Our Abpromise to you: Quality guaranteed and expert technical support

- Replacement or refund for products not performing as stated on the datasheet
- Valid for 12 months from date of delivery
- Response to your inquiry within 24 hours
- We provide support in Chinese, English, French, German, Japanese and Spanish
- Extensive multi-media technical resources to help you
- We investigate all quality concerns to ensure our products perform to the highest standards

If the product does not perform as described on this datasheet, we will offer a refund or replacement. For full details of the Abpromise, please visit <https://www.abcam.com/abpromise> or contact our technical team.

### Terms and conditions

- Guarantee only valid for products bought direct from Abcam or one of our authorized distributors