

## Product datasheet

# Recombinant Human Kallikrein 10/K10 protein ab159247

[1 Image](#)

### Overview

<b>Product name</b>	Recombinant Human Kallikrein 10/K10 protein
<b>Protein length</b>	Full length protein

### Description

<b>Nature</b>	Recombinant
<b>Source</b>	Wheat germ
<b>Amino Acid Sequence</b>	
<b>Species</b>	Human
<b>Sequence</b>	<p>MRAPHLHLSAASGARALAKLLPLLMAQLWAAEAALLP            QNDTRLDPEAYGA            PCARGSQPWQVSLFNGLSFHCAGVLVDQSWVLTA            HCGNKPLWARVGDDH            LLLLQGEQLRRTRRSVVHPKYHQGSGPILPRRTDEHDL            MLLKLARPVVPG            PRVRALQLPYRCAQPGDQCQVAGWGTTAARRVKYNK            GLTCSSITILSPKE            CEVFYPGVVTNNMICAGLDRGQDPCQSDSGGPLVCD            ETLQGILSWGVIYPC            GSAQHPAVYTYQICKYMSWINKVIRSN</p>
<b>Amino acids</b>	1 to 276
<b>Tags</b>	GST tag N-Terminus

### Specifications

Our [Abpromise guarantee](#) covers the use of **ab159247** in the following tested applications.

The application notes include recommended starting dilutions; optimal dilutions/concentrations should be determined by the end user.

<b>Applications</b>	<p>ELISA</p> <p>Western blot</p>
<b>Form</b>	Liquid
<b>Additional notes</b>	Protein concentration is above or equal to 0.05 mg/ml.

This product was previously labelled as Kallikrein 10

## Preparation and Storage

---

**Stability and Storage** Shipped on dry ice. Upon delivery aliquot and store at -80°C. Avoid freeze / thaw cycles.  
pH: 8.00  
Constituents: 0.31% Glutathione, 0.79% Tris HCl

## General Info

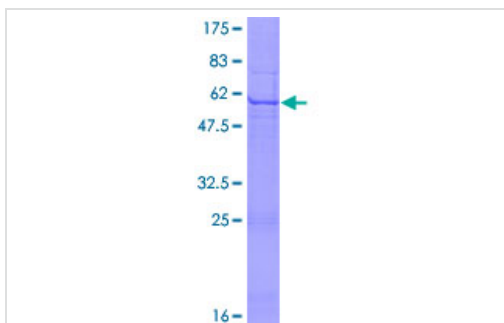
---

**Function** Has a tumor-suppressor role for NES1 in breast and prostate cancer.  
**Tissue specificity** Expressed in breast, ovary and prostate.  
**Sequence similarities** Belongs to the peptidase S1 family. Kallikrein subfamily.  
Contains 1 peptidase S1 domain.  
**Developmental stage** Down-regulated during breast cancer progression.  
**Cellular localization** Secreted.

---

## Images

---



ab159247 on a 12.5% SDS-PAGE stained with Coomassie Blue.

SDS-PAGE - Recombinant Human Kallikrein 10/K10  
protein (ab159247)

**Please note:** All products are "FOR RESEARCH USE ONLY AND ARE NOT INTENDED FOR DIAGNOSTIC OR THERAPEUTIC USE"

## Our Abpromise to you: Quality guaranteed and expert technical support

---

- Replacement or refund for products not performing as stated on the datasheet
- Valid for 12 months from date of delivery
- Response to your inquiry within 24 hours
- We provide support in Chinese, English, French, German, Japanese and Spanish
- Extensive multi-media technical resources to help you
- We investigate all quality concerns to ensure our products perform to the highest standards

If the product does not perform as described on this datasheet, we will offer a refund or replacement. For full details of the Abpromise, please visit <https://www.abcam.com/abpromise> or contact our technical team.

### **Terms and conditions**

---

- Guarantee only valid for products bought direct from Abcam or one of our authorized distributors