

Product datasheet

Recombinant Human KCTD4 protein ab174560

1 Image

Description

Product name	Recombinant Human KCTD4 protein	
Purity	> 85 % SDS-PAGE. ab174560 was purified using conventional chromatography.	
Expression system	Escherichia coli	
Accession	Q8WVF5	
Protein length	Full length protein	
Animal free	No	
Nature	Recombinant	
Species	Human	
Sequence	MGSSHHHHHSSGLVPRGSHMGSMERKINRREKEKEYE GKHNSLETDQG KNCKSTLMTLNVGGYLYTQKQTLTKYPTDFLEGVNGKILC PFDADGHY FIDRDGLLFRHVLNFLRNGELLPEGFRENQLLAQAEFF QLKGLAEEVK SRWEKEQLTPRETTFLEITDNHDRSQGLRIFCNAPDFISKIK SRMLVSK SRLDGFPEEFSISSNIQFKYFIKSENGTRLVLKEDNTFVCT LETLKFEA IMMALKCGFRLLTSLDCSKGSIVHSDALHFIK	
Predicted molecular weight	32 kDa including tags	
Amino acids	1 to 259	
Tags	His tag N-Terminus	
Additional sequence information	NCBI Accession No. NP_940686.	

Specifications

Our [Abpromise guarantee](#) covers the use of **ab174560** in the following tested applications.

The application notes include recommended starting dilutions; optimal dilutions/concentrations should be determined by the end user.

Applications	SDS-PAGE Mass Spectrometry
Mass spectrometry	MALDI-TOF

Form Liquid

Preparation and Storage

Stability and Storage

Shipped at 4°C. Store at +4°C short term (1-2 weeks). Upon delivery aliquot. Store at -20°C or -80°C. Avoid freeze / thaw cycle.

pH: 8.00

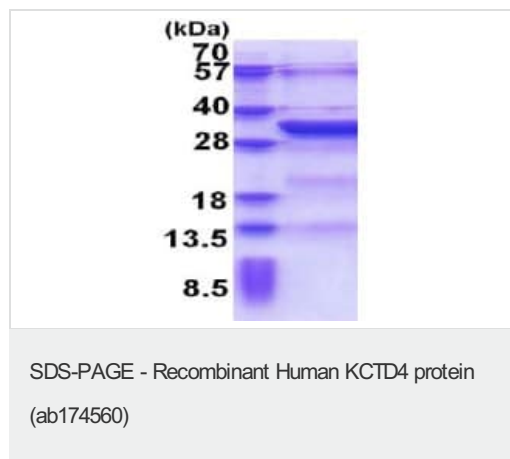
Constituents: 0.32% Tris HCl, 0.88% Sodium chloride, 40% Glycerol (glycerin, glycerine), 0.02% DTT

General Info

Relevance

KCTD4 contains a potassium channel tetramerisation domain. The N terminal, cytoplasmic tetramerisation domain (T1) of voltage-gated potassium channels encodes molecular determinants for subfamily specific assembly of alpha subunits into functional tetrameric channels. The specific function of KCTD4 is unknown.

Images



15% SDS-PAGE analysis of ab174560 (3 µg)

Please note: All products are "FOR RESEARCH USE ONLY. NOT FOR USE IN DIAGNOSTIC PROCEDURES"

Our Abpromise to you: Quality guaranteed and expert technical support

- Replacement or refund for products not performing as stated on the datasheet
- Valid for 12 months from date of delivery
- Response to your inquiry within 24 hours
- We provide support in Chinese, English, French, German, Japanese and Spanish
- Extensive multi-media technical resources to help you
- We investigate all quality concerns to ensure our products perform to the highest standards

If the product does not perform as described on this datasheet, we will offer a refund or replacement. For full details of the Abpromise, please visit <https://www.abcam.com/abpromise> or contact our technical team.

Terms and conditions

- Guarantee only valid for products bought direct from Abcam or one of our authorized distributors