

Product datasheet

Recombinant human KDM2B protein ab196435

3 Images

Description

<b>Product name</b>	Recombinant human KDM2B protein
<b>Biological activity</b>	Enzyme was incubated with 0.4 μM substrate in HEPES-containing JMJ assay buffer SA and SA- (without KG) in a 10-μl reaction for 180 min at 30°C. 5 μl of Anti-Rabbit acceptor beads (1:250) and 5 μl of rabbit polyclonal antibody (1:200) were added and incubation continued for 30 min. Streptavidin Donor beads (1:125) were added (10 μl) and mixture was further incubated for 10 min at RT before counts were measured.
<b>Purity</b>	70 - 90% by HPLC.
<b>Expression system</b>	Baculovirus infected Sf9 cells
<b>Accession</b>	<a href="#">Q8NHM5</a>
<b>Protein length</b>	Protein fragment
<b>Animal free</b>	No
<b>Nature</b>	Recombinant
<b>Species</b>	Human
<b>Sequence</b>	<p>MAGPQMGGSAEDHPPRKRHAAEKQKKKTVIYTKCFEFES            ATQRPIDRQRY            DENEDLSDVEEIMSVRGFSLEEKLRSQLYQGDFVHAMEG            KDFNYEYVQRE            ALRVPLIFREKDGLGIKMPDPDFTVRDVKLLVGSRRLLVDV            MDVNTQKGTE            MSMSQFVRYETPEAQRDKLYNVISLEFSHTKLEHLVKRP            TVVDLVDWVD            NMWPQHLKEKQTEATNAIAEMKYPKVKKYCLMSVKGCFE            DFHIDFGGTSV            WYHVFRGGKIFWLIPPTLHNLALYEEWVLSGKQSDIFLGDR            VERCQRIEL            KQGYTFFIPSGWIHAVYTPVDSL VFGGNILHSFNVPMQLRY            EIEDRTRV            QPKFRYPFYEMCWYVLERYVYCVTQRSHLTQEYQRESM            LIDAPRKPSID            GFSSDSWLEMEEEEACDQQPQEEEEKDEEGEGRDRAPK            PPTDGSTSTPTSTP            SEDQEALGKKPKAPALRFLKRTLSNESEESVKSTTLAVDY            PKTPTGSPAT</p>

EVSAKWTHLTEFELKGLKALVEKLESLPENKKCVPEGIED  
PQALLEGVKN  
VLKEHADDPSLAITGVPVVTWPKKTPKNRAVGRPKGKL  
GPASAVKLAAN  
RTTAGARRRRTRCRKCEACLRTECGECHFCKDMKKFGG  
PGRMKQSCIMRQ

<b>Predicted molecular weight</b>	75 kDa including tags
<b>Amino acids</b>	1 to 650
<b>Tags</b>	DDDDK tag C-Terminus
<b>Additional sequence information</b>	GenBank Accession No.: NM_032590

## Specifications

---

Our [Abpromise guarantee](#) covers the use of **ab196435** in the following tested applications.

The application notes include recommended starting dilutions; optimal dilutions/concentrations should be determined by the end user.

<b>Applications</b>	SDS-PAGE Functional Studies
<b>Form</b>	Liquid

## Preparation and Storage

---

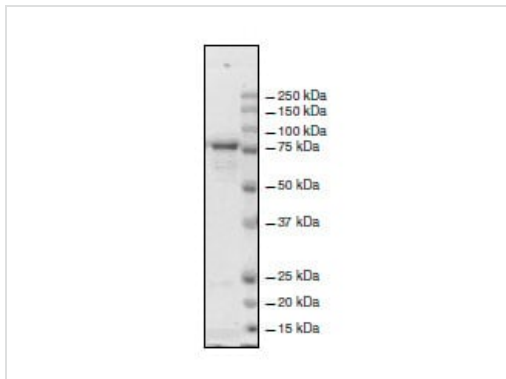
<b>Stability and Storage</b>	Shipped on Dry Ice. Store at -80°C. Avoid freeze / thaw cycle. pH: 8.00 Constituents: 0.63% Tris HCl, 0.64% Sodium chloride, 0.02% Potassium chloride, 0.05% DTT, 20% Glycerol This product is an active protein and may elicit a biological response in vivo, handle with caution.
------------------------------	--

## General Info

---

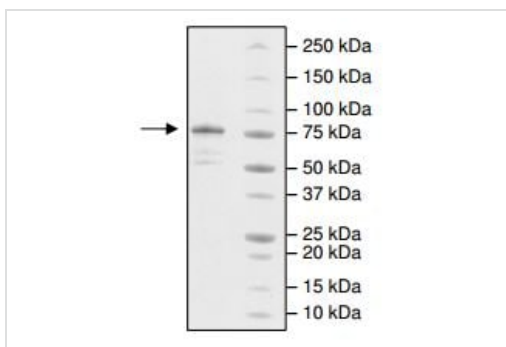
<b>Function</b>	Histone demethylase that demethylates 'Lys-4' and 'Lys-36' of histone H3, thereby playing a central role in histone code. Preferentially demethylates trimethylated H3 'Lys-4' and dimethylated H3 'Lys-36' residue while it has weak or no activity for mono- and tri-methylated H3 'Lys-36'. Preferentially binds the transcribed region of ribosomal RNA and represses the transcription of ribosomal RNA genes which inhibits cell growth and proliferation. May also serve as a substrate-recognition component of the SCF (SKP1-CUL1-F-box protein)-type E3 ubiquitin ligase complex.
<b>Sequence similarities</b>	Belongs to the JHDM1 histone demethylase family. Contains 1 CXXC-type zinc finger. Contains 1 F-box domain. Contains 1 JmjC domain. Contains 7 LRR (leucine-rich) repeats. Contains 1 PHD-type zinc finger.
<b>Domain</b>	The JmjC domain mediates demethylation activity (By similarity). It is also required for repression of ribosomal RNA genes.
<b>Cellular localization</b>	Nucleus > nucleolus.

---



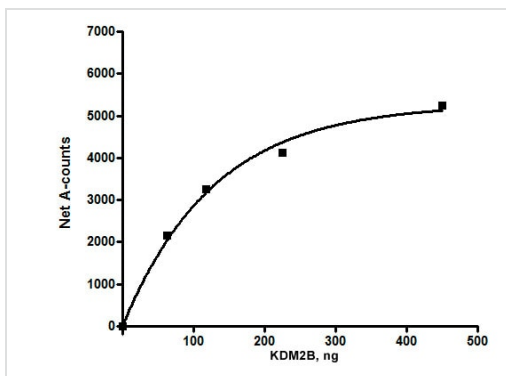
SDS-PAGE analysis of 2.4 µg of ab196435 on a 4-20% SDS gel stained with Coomassie.

SDS-PAGE - Recombinant human KDM2B protein (ab196435)



SDS-PAGE analysis of 2.8 µg of ab196435 on a 4-20% SDS gel stained with Coomassie.

SDS-PAGE - Recombinant human KDM2B protein (ab196435)



Specific activity of ab196435

Functional Studies - Recombinant human KDM2B protein (ab196435)

**Please note:** All products are "FOR RESEARCH USE ONLY. NOT FOR USE IN DIAGNOSTIC PROCEDURES"

**Our Abpromise to you: Quality guaranteed and expert technical support**

- Replacement or refund for products not performing as stated on the datasheet

- Valid for 12 months from date of delivery
- Response to your inquiry within 24 hours
  
- We provide support in Chinese, English, French, German, Japanese and Spanish
- Extensive multi-media technical resources to help you
- We investigate all quality concerns to ensure our products perform to the highest standards

If the product does not perform as described on this datasheet, we will offer a refund or replacement. For full details of the Abpromise, please visit <https://www.abcam.com/abpromise> or contact our technical team.

### **Terms and conditions**

---

- Guarantee only valid for products bought direct from Abcam or one of our authorized distributors