

Product datasheet

Recombinant Human KDM2B protein (Tagged)  
ab268700

1 Image

Description

---

<b>Product name</b>	Recombinant Human KDM2B protein (Tagged)
<b>Purity</b>	> 75 % SDS-PAGE.
<b>Expression system</b>	Baculovirus infected Sf9 cells
<b>Accession</b>	<a href="#">BC115380</a>
<b>Protein length</b>	Full length protein
<b>Animal free</b>	No
<b>Nature</b>	Recombinant
<b>Species</b>	Human
<b>Molecular weight information</b>	120 kDa by SDS-PAGE
<b>Tags</b>	GST tag N-Terminus

Specifications

---

Our [Abpromise guarantee](#) covers the use of **ab268700** in the following tested applications.

The application notes include recommended starting dilutions; optimal dilutions/concentrations should be determined by the end user.

<b>Applications</b>	SDS-PAGE
<b>Form</b>	Liquid

Preparation and Storage

---

<b>Stability and Storage</b>	Shipped on Dry Ice. Upon delivery aliquot. Store at -80°C. Avoid freeze / thaw cycle. pH: 7.50 Constituents: 0.79% Tris HCl, 0.87% Sodium chloride, 0.31% Glutathione, 0.003% EDTA, 0.004% DTT, 0.002% PMSF, 25% Glycerol (glycerin, glycerine)
------------------------------	---

General Info

---

<b>Function</b>	Histone demethylase that demethylates 'Lys-4' and 'Lys-36' of histone H3, thereby playing a
-----------------	---

central role in histone code. Preferentially demethylates trimethylated H3 'Lys-4' and dimethylated H3 'Lys-36' residue while it has weak or no activity for mono- and tri-methylated H3 'Lys-36'. Preferentially binds the transcribed region of ribosomal RNA and represses the transcription of ribosomal RNA genes which inhibits cell growth and proliferation. May also serve as a substrate-recognition component of the SCF (SKP1-CUL1-F-box protein)-type E3 ubiquitin ligase complex.

#### Sequence similarities

Belongs to the JHDM1 histone demethylase family.  
Contains 1 CXXC-type zinc finger.  
Contains 1 F-box domain.  
Contains 1 JmjC domain.  
Contains 7 LRR (leucine-rich) repeats.  
Contains 1 PHD-type zinc finger.

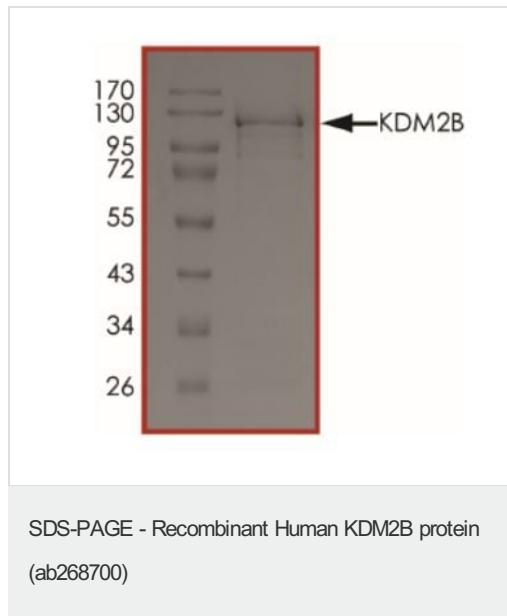
#### Domain

The JmjC domain mediates demethylation activity (By similarity). It is also required for repression of ribosomal RNA genes.

#### Cellular localization

Nucleus > nucleolus.

#### Images



SDS-PAGE analysis of ab268700.

**Please note:** All products are "FOR RESEARCH USE ONLY. NOT FOR USE IN DIAGNOSTIC PROCEDURES"

#### Our Abpromise to you: Quality guaranteed and expert technical support

- Replacement or refund for products not performing as stated on the datasheet
- Valid for 12 months from date of delivery
- Response to your inquiry within 24 hours
- We provide support in Chinese, English, French, German, Japanese and Spanish
- Extensive multi-media technical resources to help you
- We investigate all quality concerns to ensure our products perform to the highest standards

If the product does not perform as described on this datasheet, we will offer a refund or replacement. For full details of the Abpromise,

please visit <https://www.abcam.com/abpromise> or contact our technical team.

## **Terms and conditions**

---

- Guarantee only valid for products bought direct from Abcam or one of our authorized distributors