

Product datasheet

Recombinant human KDS protein ab125551

2 Images

Description

Product name	Recombinant human KDS protein
Biological activity	The specific activity of ab125551 was determined to be 260 nmol/min/mg.
Purity	> 90 % SDS-PAGE. Assessed by densitometry.
Expression system	Baculovirus infected Sf9 cells
Accession	Q9H2K8
Protein length	Protein fragment
Animal free	No
Nature	Recombinant
Species	Human
Predicted molecular weight	89 kDa
Amino acids	1 to 463

Specifications

Our [Abpromise guarantee](#) covers the use of **ab125551** in the following tested applications.

The application notes include recommended starting dilutions; optimal dilutions/concentrations should be determined by the end user.

Applications	Western blot Functional Studies SDS-PAGE
Form	Liquid
Additional notes	ab204875 (PKC epsilon peptide) can be utilized as a substrate for assessing kinase activity This product was previously labelled as TAOK3

Preparation and Storage

Stability and Storage	Shipped on dry ice. Upon delivery aliquot and store at -80°C. Avoid freeze / thaw cycles. pH: 7.50 Constituents: 0.31% Glutathione, 0.002% PMSF, 0.004% DTT, 0.79% Tris HCl, 0.003% EDTA,
------------------------------	---

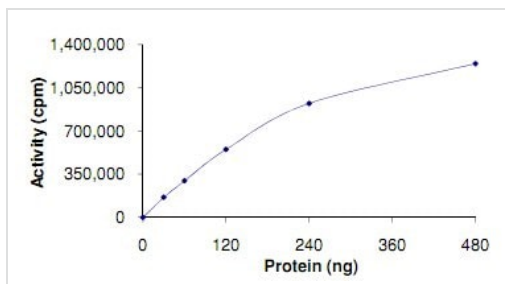
25% Glycerol (glycerin, glycerine), 0.88% Sodium chloride

This product is an active protein and may elicit a biological response in vivo, handle with caution.

General Info

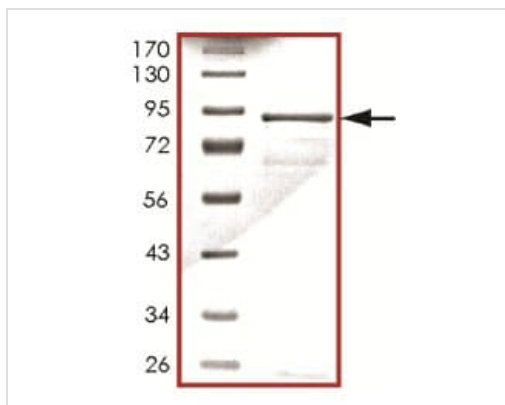
Function	Inhibits the basal activity of Jun kinase. Negatively regulated by epidermal growth factor (EGF). When overexpressed, may activate ERK1/ERK2 and JNK/SAPK.
Tissue specificity	Ubiquitously expressed at a low level, and highly expressed in peripheral blood leukocytes (PBLs), thymus, spleen, kidney, skeletal muscle, heart and liver.
Sequence similarities	Belongs to the protein kinase superfamily. STE Ser/Thr protein kinase family. STE20 subfamily. Contains 1 protein kinase domain.
Post-translational modifications	Autophosphorylated. Phosphorylated upon DNA damage, probably by ATM or ATR.
Cellular localization	Cytoplasm. Cell membrane. Also localized to the peripheral cell membrane.

Images



Functional Studies - Recombinant human KDS protein (ab125551)

The specific activity of ab125551 was determined to be 260 nmol/min/mg.



SDS-PAGE - Recombinant human KDS protein (ab125551)

SDS-PAGE analysis of ab125551.

Please note: All products are "FOR RESEARCH USE ONLY. NOT FOR USE IN DIAGNOSTIC PROCEDURES"

Our Abpromise to you: Quality guaranteed and expert technical support

- Replacement or refund for products not performing as stated on the datasheet
- Valid for 12 months from date of delivery
- Response to your inquiry within 24 hours

- We provide support in Chinese, English, French, German, Japanese and Spanish
- Extensive multi-media technical resources to help you
- We investigate all quality concerns to ensure our products perform to the highest standards

If the product does not perform as described on this datasheet, we will offer a refund or replacement. For full details of the Abpromise, please visit <https://www.abcam.com/abpromise> or contact our technical team.

Terms and conditions

- Guarantee only valid for products bought direct from Abcam or one of our authorized distributors