

Product datasheet

Recombinant Human KIAA0319L protein ab164162

1 Image

Description

Product name	Recombinant Human KIAA0319L protein
Expression system	Wheat germ
Protein length	Full length protein
Animal free	No
Nature	Recombinant
Species	Human

Sequence

```

MEKRLGVKPNPASWILSGYYWQTSAKWLRSLYLFYTCFC
FSVLWLSTDAS
ESRCQQGKTQFGVGLRSGGENHLWLLEGTPSLQSCCLAA
CCQDSACHVFWW
LEGMCIQADCSR PQSCRAFRT HSSNSMLVFLKKFQTADD
LGFLPEDDVPH
LLGLGWNWASWRQSP PRAALRPAVSSSDQQSLIRKLQK
RGSPSDVVTPIV
TQHSKVND SNELGGLT TSGSAEVHKAITISSPLTDLTAE L
SGGPKNVSV
QPEISEGLATTPSTQQVKSSEKTQIAVPQPVAPSYSYATPT
PQASFQSTS
APYPVIKELVVSAGESVQITLPKNEVQLNAYVLQEPPKGET
YTYDWQLIT
HPRDYSGEMEGKHSQILKLSKLT PGLYEFKVIVEGQNAHG
EGYVNVTVKP
EPRKNRPPIAMSPQFQEISLPTTSTVIDGSQSTDDDKIVQY
HWEELKGP
LREEKISED TAILKLSKLVPGNYT FSLTVVSDGATNSTTA
NLTVNKAVD
YPPVANAGPNQVITLPQNSITLFGNQSTDDHGITSYEW SLS
PSSKGVVE
MQGVRTPTLQLS AMQEGDYTYQLTVTDTIGQQATAQVTVM
QPENKPPQ
ADAGPDKELTLPVDSTTLDGSKSSDDQKIISYLWEKTQGP
DGVQLENANS
SVATVTGLQVGT YVFTLTVKDERNLQSQSSVNVIMKEEINK
PPIAKITGN
VVITLPTSTAELD GSKSSDDKGVSYLWTRDEGSPAAGEV
    
```

LNHSDHHPIL
FLSNLVEGTYTFHLKVTDKAGESDTRTTVEVKPDPRKNN
LVEILDINV
SQLTERLKGMFIRQIGVLLGVLDSDIVQKIQPYTEQSTKMV
FFVQNEPP
HQIFKGHEVAAMLKSELRKQKADFLIFRALEVNTVTCQLN
CSDHGHCDSE
TKRCICDPFWMENFIKVQLRDGDSNCEWSVLYVIATFVM
VALGILSWT
VICCCKRQKGPKRKSKYKILDATDQESLELKPTS RAGIKQ
KGLLLSSSL
MHSESELDSDDAIFTWPDREKGLLHGQNGSVPNGQTPL
KARSPREEIL

Amino acids 1 to 1049
Tags GST tag N-Terminus

Specifications

Our [Abpromise guarantee](#) covers the use of **ab164162** in the following tested applications.

The application notes include recommended starting dilutions; optimal dilutions/concentrations should be determined by the end user.

Applications ELISA
Western blot

Form Liquid

Additional notes

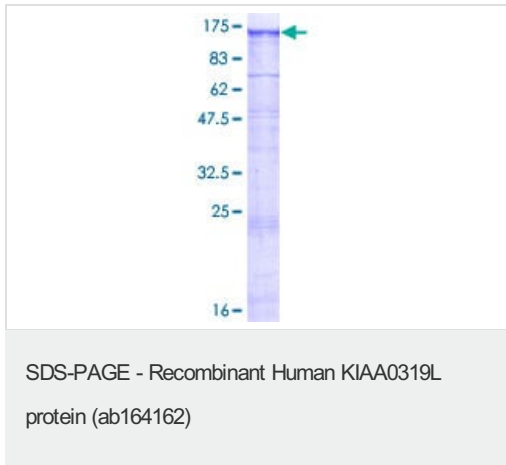
Preparation and Storage

Stability and Storage Shipped on dry ice. Upon delivery aliquot and store at -80°C. Avoid freeze / thaw cycles.
pH: 8.00
Constituents: 0.31% Glutathione, 0.79% Tris HCl

General Info

Function Possible role in axon guidance through interaction with RTN4R.
Tissue specificity Expressed in cortical neurons in the brain cortex (at protein level).
Sequence similarities Contains 1 MANSC domain.
Contains 5 PKD domains.
Post-translational modifications N-glycosylated.
Cellular localization Cytoplasmic granule membrane.

Images



ab164162 on a 12.5% SDS-PAGE stained with Coomassie Blue.

Please note: All products are "FOR RESEARCH USE ONLY. NOT FOR USE IN DIAGNOSTIC PROCEDURES"

Our Abpromise to you: Quality guaranteed and expert technical support

- Replacement or refund for products not performing as stated on the datasheet
- Valid for 12 months from date of delivery
- Response to your inquiry within 24 hours
- We provide support in Chinese, English, French, German, Japanese and Spanish
- Extensive multi-media technical resources to help you
- We investigate all quality concerns to ensure our products perform to the highest standards

If the product does not perform as described on this datasheet, we will offer a refund or replacement. For full details of the Abpromise, please visit <https://www.abcam.com/abpromise> or contact our technical team.

Terms and conditions

- Guarantee only valid for products bought direct from Abcam or one of our authorized distributors