

Product datasheet

Recombinant Human KIFC1 protein ab152492

1 Image

Description

Product name	Recombinant Human KIFC1 protein
Expression system	Wheat germ
Accession	Q9BW19
Protein length	Full length protein
Animal free	No
Nature	Recombinant
Species	Human

Sequence

MDPQRSPLLEVKGNIELKRPLIKAPSQLPLSGSRLKRRPD
 QMEDGLEPEK
 KRTRGLGATTKITTSHPRVPSLTTVPQTQGQTTAQKVSKKT
 GPRCSTAI
 TGLKNQKPVPAVPVQKSGTSGVPPMAGGKKPSKRP
 AWDLKGQLCDLNAEL
 KRCRERTQTLQENQQLQDQLRDAQQVKALGTERTTLE
 GHLAKVQAQAE
 QGQQLKNLKACVLELEERLSTQEGLVQELQKKQVELQE
 ERRGLMSQLEE
 KERRLQTSEAAALSSSQAEVASLRQETVAQAALLTEREER
 LHGLEMERRRL
 HNQLQELKGNIRVFCRVRPVLPGIPTPPPGLLLFPSGPGG
 PSDPPTRLSL
 SRSDERRGTLGAPAPPPRHDFSFDRVFPPGSGQDEVF
 EEIAMLVQSALD
 GYPVCIFAYGQTGSGKFTMEGGPGGDPQLEGLIPRALRH
 LFSVAQELSG
 QGWTYSFVASVEIMNETVRDLLATGTRKGGGGECEIRRA
 GPGSEELTVT
 NARYVPVSCEKEVDALLHLARQNRAVARTAQNERSRSH
 SVFQLQISGEH
 SSRGLQCGAPLSLVDLGASERLDPGLALGPGERERLRET
 QAINSSLSTLG
 LVIMALSNKESHVPYRNSKLTLLQNSLGGSAKMLMFVNIS
 PLEENVSESLNSLRFASKVNQCIVIGTAQANRK

Predicted molecular weight 100 kDa including tags

Specifications

Our [Abpromise guarantee](#) covers the use of **ab152492** in the following tested applications.

The application notes include recommended starting dilutions; optimal dilutions/concentrations should be determined by the end user.

Applications	ELISA SDS-PAGE Western blot
Form	Liquid

Additional notes

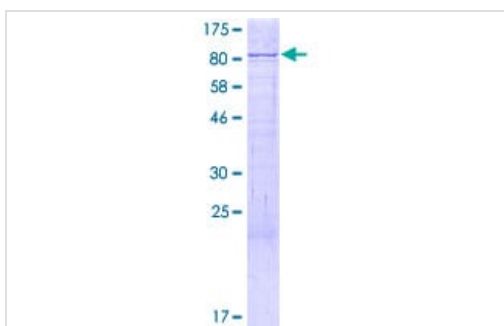
Preparation and Storage

Stability and Storage	Shipped on dry ice. Upon delivery aliquot and store at -80°C. Avoid freeze / thaw cycles. pH: 8.00 Constituents: 0.31% Glutathione, 0.79% Tris HCl
------------------------------	--

General Info

Function	Minus end-directed microtubule-dependent motor required for bipolar spindle formation. May contribute to movement of early endocytic vesicles.
Sequence similarities	Belongs to the kinesin-like protein family. NCD subfamily. Contains 1 kinesin-motor domain.
Cellular localization	Nucleus. Cytoplasm > cytoskeleton > centrosome. Cytoplasm > cytoskeleton > spindle. Early endosome. Associated with nucleus during interphase, centrosomes in early and spindle in later mitosis.

Images



12.5% SDS-PAGE analysis of ab152492 stained with Coomassie Blue.

SDS-PAGE - Recombinant Human KIFC1 protein
(ab152492)

Please note: All products are "FOR RESEARCH USE ONLY. NOT FOR USE IN DIAGNOSTIC PROCEDURES"

Our Abpromise to you: Quality guaranteed and expert technical support

- Replacement or refund for products not performing as stated on the datasheet
- Valid for 12 months from date of delivery
- Response to your inquiry within 24 hours

- We provide support in Chinese, English, French, German, Japanese and Spanish
- Extensive multi-media technical resources to help you
- We investigate all quality concerns to ensure our products perform to the highest standards

If the product does not perform as described on this datasheet, we will offer a refund or replacement. For full details of the Abpromise, please visit <https://www.abcam.com/abpromise> or contact our technical team.

Terms and conditions

- Guarantee only valid for products bought direct from Abcam or one of our authorized distributors