

Product datasheet

# Recombinant Human KLC3 protein ab165560

1 Image

Overview

---

<b>Product name</b>	Recombinant Human KLC3 protein
<b>Protein length</b>	Full length protein

Description

---

<b>Nature</b>	Recombinant
<b>Source</b>	Wheat germ
<b>Amino Acid Sequence</b>	
<b>Species</b>	Human

<b>Sequence</b>	<p>MSVQVAAPGSAGLGPERLSPEELVRQTRQVVQGLEA          LRAEHHGLAGHLAE          ALAGQGPAAGLEMLEEKQQVVSHSLEAIELGLGEAQV          LLALSAHVGALEA          EKQRLRSQARRLAQENVWLREELEETQRRLRASEES          VAQLEEEKRLHLEFL          GQLRQYDPPAESQSESPRRDSLASLFPSEEEERKG          PEAAGAAAAQQGGY          EIPARLRTLHNLVIQYAGQGRYEVAVPLCRQALEDLER          SSGHCHPDVATM          LNILALVYRDQNKYKEATDLLHDALQIREQTLGPEHPAV          AATLNNLAVLY          GKRGRYREAEP LCQRALEIREKVLGADHPDVAKQLNN          LALLCQNQGKFED          VERHYARALSIEALGGPHDPNVAKTKNNLASAYLKQN          KYQQAEELYKEI          LHKEDLPAPLGAPNTGTAGDAEQALRRSSLSKIRESI          RRGSEKLVSRRL          GEAAAGAAGMKRAMSLNLTNVDAPRAPGTQFP SWHL          DKAPRTLSASTQDL SPH</p>
-----------------	---

<b>Amino acids</b>	1 to 503
<b>Tags</b>	proprietary tag N-Terminus

Specifications

---

Our [Abpromise guarantee](#) covers the use of **ab165560** in the following tested applications.

The application notes include recommended starting dilutions; optimal dilutions/concentrations should be determined by the end user.

<b>Applications</b>	Western blot ELISA
<b>Form</b>	Liquid
<b>Additional notes</b>	Protein concentration is above or equal to 0.05 mg/ml.

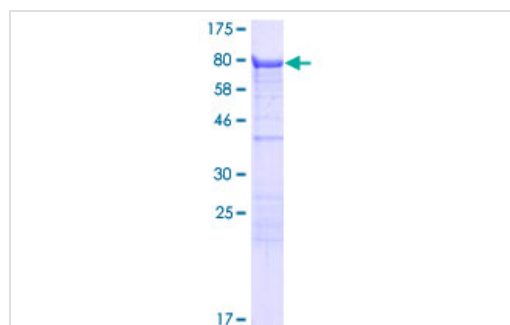
## Preparation and Storage

<b>Stability and Storage</b>	Shipped on dry ice. Upon delivery aliquot and store at -80°C. Avoid freeze / thaw cycles. pH: 8.00 Constituents: 0.31% Glutathione, 0.79% Tris HCl
------------------------------	--

## General Info

<b>Function</b>	Kinesin is a microtubule-associated force-producing protein that may play a role in organelle transport.
<b>Sequence similarities</b>	Belongs to the kinesin light chain family. Contains 5 TPR repeats.
<b>Domain</b>	The heptad repeat (HR) motif is sufficient for interaction with kinesin heavy (KHL) chains and ODF1. The TPR region is involved in mitochondrial binding.
<b>Cellular localization</b>	Cytoplasm > cytoskeleton. Elongating spermatid tail midpiece, localized in outer dense fibers (ODFs) and associates with mitochondria.

## Images



ab165560 on a 12.5% SDS-PAGE stained with Coomassie Blue.

SDS-PAGE - Recombinant Human KLC3 protein  
(ab165560)

**Please note:** All products are "FOR RESEARCH USE ONLY AND ARE NOT INTENDED FOR DIAGNOSTIC OR THERAPEUTIC USE"

## Our Abpromise to you: Quality guaranteed and expert technical support

- Replacement or refund for products not performing as stated on the datasheet

- Valid for 12 months from date of delivery
- Response to your inquiry within 24 hours
- We provide support in Chinese, English, French, German, Japanese and Spanish
- Extensive multi-media technical resources to help you
- We investigate all quality concerns to ensure our products perform to the highest standards

If the product does not perform as described on this datasheet, we will offer a refund or replacement. For full details of the Abpromise, please visit <https://www.abcam.com/abpromise> or contact our technical team.

### **Terms and conditions**

---

- Guarantee only valid for products bought direct from Abcam or one of our authorized distributors