

Product datasheet

Recombinant Human KLC4 protein ab164803

1 Image

Overview

Product name	Recombinant Human KLC4 protein
Protein length	Full length protein

Description

Nature	Recombinant
Source	Wheat germ
Amino Acid Sequence	
Species	Human

Sequence	<p>MSGLVLGQRDEPAGHRLSQEEILGSTRLLVSQGLEALR SEHQAVLQSLST IECLQQGGHEEGLVHEKARQLRRSMENIELGLSEAQV MLALASHLSTVES EKQKLRAQVRRLCQENQWLRDELAGTQQRLQRSEQA VAQLEEEKHLFL GQLRQYDEDGHTSEEKEGDATKDSLDDLPNEEEED PSNGLSRGQGATAA QGGYEIPARLRTLHNLVIQYAAQGRYEVAVPLCKQAL EDLERTSGRGHP DVATMLNILALVYRDQNKYKEAAHLLNDALSIRESTLGP DHPVAATLNN LAVLYGKRGKYKEAEPLCQRALEIREKVLGTNHPDVAK QLNNLALLCQNQ GKYEAVERYYQRALAIYEGQLGPDNPNVARTKNNLAS CYLKQGKYAEAET LYKEILTRAHVQEFGSVDDDHKPMWMAEEREEMSKS RHHEGGTPYAEYG GWYKACKVSSPTVNTTLRNLGALYRRQGKLEAAETLE ECALRSRRQGTDP ISQTKVAELLGESDGRRTSQEGPGDSVKFEGGEDAS VAVEWSDGSGTLQ RSGSLGKIRDVLRSSSELLVRKLQGTETPRPSSSNMKR AASLNLYNQPSAA PLQVSRGLSASTMDLSSSS</p>
-----------------	---

Amino acids	1 to 619
--------------------	----------

Tags proprietary tag N-Terminus

Specifications

Our [Abpromise guarantee](#) covers the use of **ab164803** in the following tested applications.

The application notes include recommended starting dilutions; optimal dilutions/concentrations should be determined by the end user.

Applications ELISA

Western blot

Form Liquid

Additional notes Protein concentration is above or equal to 0.05 mg/ml.

Preparation and Storage

Stability and Storage Shipped on dry ice. Upon delivery aliquot and store at -80°C. Avoid freeze / thaw cycles.

pH: 8.00

Constituents: 0.31% Glutathione, 0.79% Tris HCl

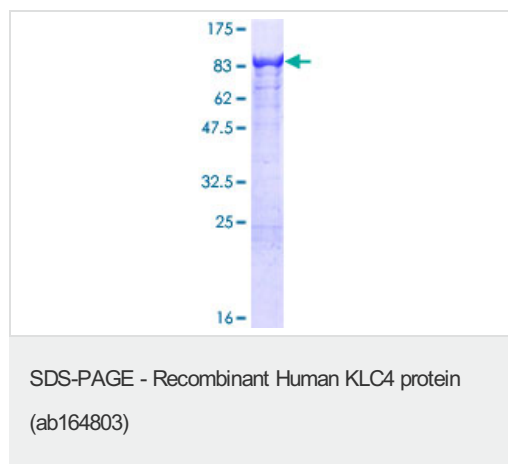
General Info

Function Kinesin is a microtubule-associated force-producing protein that may play a role in organelle transport. The light chain may function in coupling of cargo to the heavy chain or in the modulation of its ATPase activity.

Sequence similarities Belongs to the kinesin light chain family.
Contains 7 TPR repeats.

Cellular localization Cytoplasm > cytoskeleton.

Images



ab164803 on a 12.5% SDS-PAGE stained with Coomassie Blue.

Please note: All products are "FOR RESEARCH USE ONLY AND ARE NOT INTENDED FOR DIAGNOSTIC OR THERAPEUTIC USE"

Our Abpromise to you: Quality guaranteed and expert technical support

- Replacement or refund for products not performing as stated on the datasheet
- Valid for 12 months from date of delivery
- Response to your inquiry within 24 hours

- We provide support in Chinese, English, French, German, Japanese and Spanish
- Extensive multi-media technical resources to help you
- We investigate all quality concerns to ensure our products perform to the highest standards

If the product does not perform as described on this datasheet, we will offer a refund or replacement. For full details of the Abpromise, please visit <https://www.abcam.com/abpromise> or contact our technical team.

Terms and conditions

- Guarantee only valid for products bought direct from Abcam or one of our authorized distributors