

Product datasheet

Recombinant Human KLF16 protein ab164447

1 Image

Overview

Product name	Recombinant Human KLF16 protein
Protein length	Full length protein

Description

Nature	Recombinant
Source	Wheat germ
Amino Acid Sequence	
Species	Human
Sequence	MSAAVACVDYFAADVLMMAISSGAVVHRGRPGPEGAG PAAGLDVRAARREA ASPGTPGPPPPPPAASGPGPGAAAAPHLLAASILADL RGGPGAAPGGASP ASSSSAASSPSSGRAPGAAPSAAAKSHRCPPFDCAK AAYKSSHLKSHLRT HTGERPFACDWQGCDDKKFARSDELARHHRHTHTGEKR FSCPLCSKRFRSD HLAKHARRHPGFHPDLLRRPGARSTSPSDSLPCSLAG SPAPSPAPSPAPA GL
Amino acids	1 to 252
Tags	proprietary tag N-Terminus

Specifications

Our [Abpromise guarantee](#) covers the use of **ab164447** in the following tested applications.

The application notes include recommended starting dilutions; optimal dilutions/concentrations should be determined by the end user.

Applications	ELISA Western blot
Form	Liquid
Additional notes	Protein concentration is above or equal to 0.05 mg/ml.

Preparation and Storage

Stability and Storage

Shipped on dry ice. Upon delivery aliquot and store at -80°C. Avoid freeze / thaw cycles.

pH: 8.00

Constituents: 0.31% Glutathione, 0.79% Tris HCl

General Info

Function

Transcription factor that binds GC and GT boxes and displaces Sp1 and Sp3 from these sequences. Modulates dopaminergic transmission in the brain.

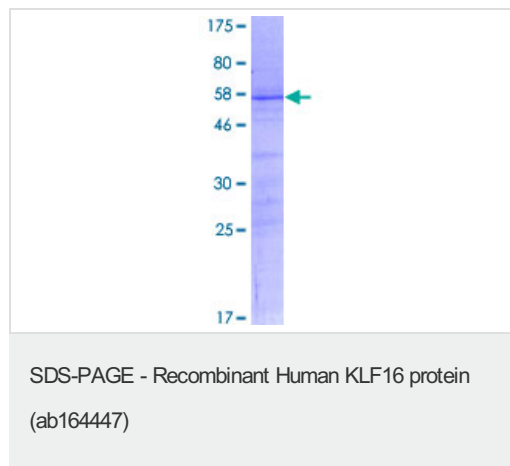
Sequence similarities

Belongs to the Sp1 C2H2-type zinc-finger protein family.
Contains 3 C2H2-type zinc fingers.

Cellular localization

Nucleus.

Images



ab164447 on a 12.5% SDS-PAGE stained with Coomassie Blue.

Please note: All products are "FOR RESEARCH USE ONLY AND ARE NOT INTENDED FOR DIAGNOSTIC OR THERAPEUTIC USE"

Our Abpromise to you: Quality guaranteed and expert technical support

- Replacement or refund for products not performing as stated on the datasheet
- Valid for 12 months from date of delivery
- Response to your inquiry within 24 hours
- We provide support in Chinese, English, French, German, Japanese and Spanish
- Extensive multi-media technical resources to help you
- We investigate all quality concerns to ensure our products perform to the highest standards

If the product does not perform as described on this datasheet, we will offer a refund or replacement. For full details of the Abpromise, please visit <https://www.abcam.com/abpromise> or contact our technical team.

Terms and conditions

- Guarantee only valid for products bought direct from Abcam or one of our authorized distributors