

Product datasheet

Recombinant Human KLHL10 protein ab166235

1 Image

Overview

<b>Product name</b>	Recombinant Human KLHL10 protein
<b>Protein length</b>	Full length protein

Description

<b>Nature</b>	Recombinant
<b>Source</b>	Wheat germ
<b>Amino Acid Sequence</b>	
<b>Species</b>	Human

<b>Sequence</b>	MEMESAAASTRFHQPHMERKMSAMACEIFNELRLEG KLCDVVIKVNGFEF SAHKNILCSCSSYFRALFTSGWNNTTEKKVYNIPGISPD MMKLIIEYAYTR TVPITPDNVEKLLAAADQFNIMGMRGCCEFLKSELCLD NCIGICKFTDY YYCPQLRQKAYMFILHNFEEMVKVSAEFLELSVTELKDI IEKDELNVKQE DAVFEAILKWISHDPQNRKQHSILLPKVRLALMHAEIF MNNVKMNDYVK DSEECKPVIINALKAMYDLNMNGPSNSDFTNPLTRPRL PYAILFAIGGWS GGSPNAIEAYDARADRWVNVTCSEESPRAYHGAAYL KGYVYIIGGFDSV DYFNSVKRFDPVKKTWHQVAPMHSRRCYVSVTVLGN FIYAMGGFDGYVRL STAERYEPETNQWTLIAPMHEQRSDASATTLYGKVYIC GGFNGNECLFTA EYNTESNQWTVIAPMRSRRSGIGVIAYGEHVYAVGGF DGANRLRSAEAY SPVANTWRTIPTMFNPRSNFGIEVVDDLLFVVGGFNGF TTTFNVECYDEK TDEWYDAHDMSTYRSALSCCVVPLANVEEYAARRDN FPGLELRDEVKYS ASTSTLPV
-----------------	---

<b>Amino acids</b>	1 to 608
--------------------	----------

**Tags** proprietary tag N-Terminus

## Specifications

---

Our [Abpromise guarantee](#) covers the use of **ab166235** in the following tested applications.

The application notes include recommended starting dilutions; optimal dilutions/concentrations should be determined by the end user.

**Applications** Western blot

ELISA

**Form** Liquid

**Additional notes** Protein concentration is above or equal to 0.05 mg/ml.

## Preparation and Storage

---

**Stability and Storage** Shipped on dry ice. Upon delivery aliquot and store at -80°C. Avoid freeze / thaw cycles.

pH: 8.00

Constituents: 0.31% Glutathione, 0.79% Tris HCl

## General Info

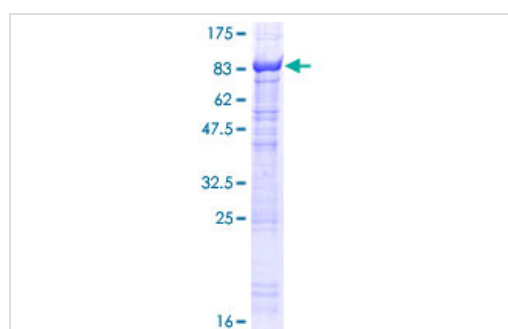
---

**Relevance** The protein encoded by this gene is a member of the kelch family of proteins, which is characterized by a 44-56 amino acid repeat motif. The kelch motif appears in many different polypeptide contexts and contains multiple potential protein-protein contact sites. Members of this family are present both throughout the cell and extracellularly, with diverse activities.

**Cellular localization** Cytoplasmic

## Images

---



ab166235 on a 12.5% SDS-PAGE stained with Coomassie Blue.

SDS-PAGE - Recombinant Human KLHL10 protein

(ab166235)

**Please note:** All products are "FOR RESEARCH USE ONLY AND ARE NOT INTENDED FOR DIAGNOSTIC OR THERAPEUTIC USE"

**Our Abpromise to you: Quality guaranteed and expert technical support**

---

- Replacement or refund for products not performing as stated on the datasheet
- Valid for 12 months from date of delivery
- Response to your inquiry within 24 hours
  
- We provide support in Chinese, English, French, German, Japanese and Spanish
- Extensive multi-media technical resources to help you
- We investigate all quality concerns to ensure our products perform to the highest standards

If the product does not perform as described on this datasheet, we will offer a refund or replacement. For full details of the Abpromise, please visit <https://www.abcam.com/abpromise> or contact our technical team.

### **Terms and conditions**

---

- Guarantee only valid for products bought direct from Abcam or one of our authorized distributors