

Product datasheet

Recombinant Human LAMB3 protein ab158811

1 Image

Description

Product name	Recombinant Human LAMB3 protein	
Expression system	Wheat germ	
Protein length	Protein fragment	
Animal free	No	
Nature	Recombinant	
Species	Human	
Sequence	AEGASEQALSAQEGFERIKQKYAELKDRLGQSSMLGEEQ ARIQSVKTEAE ELFGETMEMMDRMKDMELELLRGSQAIMLRSADLTGLEK RVEQIRDHING RVLYYATC	
Amino acids	1064 to 1171	
Tags	GST tag N-Terminus	

Specifications

Our [Abpromise guarantee](#) covers the use of **ab158811** in the following tested applications.

The application notes include recommended starting dilutions; optimal dilutions/concentrations should be determined by the end user.

Applications	Western blot
	ELISA
Form	Liquid

Additional notes

Preparation and Storage

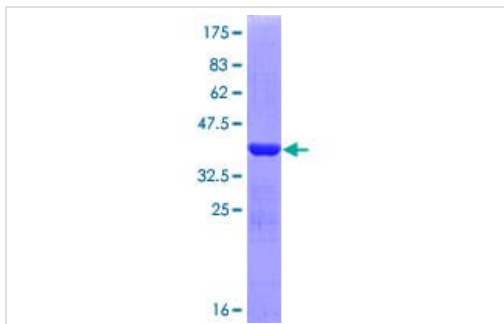
Stability and Storage	Shipped on dry ice. Upon delivery aliquot and store at -80°C. Avoid freeze / thaw cycles.
	pH: 8.00
	Constituents: 0.31% Glutathione, 0.79% Tris HCl

General Info

General info

Function	Binding to cells via a high affinity receptor, laminin is thought to mediate the attachment, migration and organization of cells into tissues during embryonic development by interacting with other extracellular matrix components.
Tissue specificity	Found in the basement membranes (major component).
Involvement in disease	<p>Defects in LAMB3 are a cause of epidermolysis bullosa junctional Herlitz type (H-JEB) [MIM:226700]; also known as junctional epidermolysis bullosa Herlitz-Pearson type. JEB defines a group of blistering skin diseases characterized by tissue separation which occurs within the dermo-epidermal basement membrane. H-JEB is a severe, infantile and lethal form. Death occurs usually within the first six months of life. Occasionally, children survive to teens. H-JEB is marked by bullous lesions at birth and extensive denudation of skin and mucous membranes that may be hemorrhagic.</p> <p>Defects in LAMB3 are a cause of generalized atrophic benign epidermolysis bullosa (GABEB) [MIM:226650]. GABEB is a non-lethal, adult form of junctional epidermolysis bullosa characterized by life-long blistering of the skin, associated with hair and tooth abnormalities.</p>
Sequence similarities	<p>Contains 6 laminin EGF-like domains.</p> <p>Contains 1 laminin N-terminal domain.</p>
Domain	<p>The alpha-helical domains I and II are thought to interact with other laminin chains to form a coiled coil structure.</p> <p>Domain VI is globular.</p>
Cellular localization	Secreted > extracellular space > extracellular matrix > basement membrane.

Images



SDS-PAGE - Recombinant Human LAMB3 protein
(ab158811)

ab158811 on a 12.5% SDS-PAGE stained with Coomassie Blue.

Please note: All products are "FOR RESEARCH USE ONLY. NOT FOR USE IN DIAGNOSTIC PROCEDURES"

Our Abpromise to you: Quality guaranteed and expert technical support

- Replacement or refund for products not performing as stated on the datasheet
- Valid for 12 months from date of delivery
- Response to your inquiry within 24 hours
- We provide support in Chinese, English, French, German, Japanese and Spanish

- Extensive multi-media technical resources to help you
- We investigate all quality concerns to ensure our products perform to the highest standards

If the product does not perform as described on this datasheet, we will offer a refund or replacement. For full details of the Abpromise, please visit <https://www.abcam.com/abpromise> or contact our technical team.

Terms and conditions

- Guarantee only valid for products bought direct from Abcam or one of our authorized distributors