

## Product datasheet

# Recombinant Human LAMC2 protein ab158812

1 Image

### Description

<b>Product name</b>	Recombinant Human LAMC2 protein	
<b>Expression system</b>	Wheat germ	
<b>Protein length</b>	Protein fragment	
<b>Animal free</b>	No	
<b>Nature</b>	Recombinant	
<b>Species</b>	Human	
<b>Sequence</b>	VDTRAKNAGVTIQDTLNTLDGLLHLMQPLSVDEEGLVLL EQKLSRAKTQ INQLRPMMSLEERARQQRGHLHLLSETSILADVKNLE NIRDNLPPG CYNTQALEQQ	
<b>Amino acids</b>	1084 to 1193	
<b>Tags</b>	GST tag N-Terminus	

### Specifications

Our [Abpromise guarantee](#) covers the use of **ab158812** in the following tested applications.

The application notes include recommended starting dilutions; optimal dilutions/concentrations should be determined by the end user.

<b>Applications</b>	ELISA
	Western blot
<b>Form</b>	Liquid

### Additional notes

### Preparation and Storage

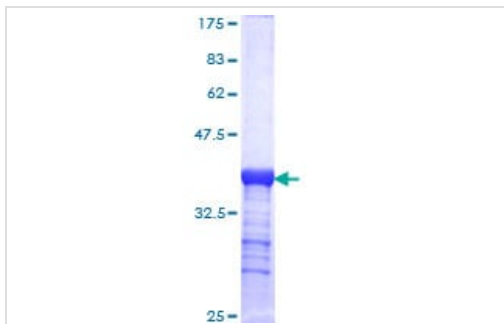
<b>Stability and Storage</b>	Shipped on dry ice. Upon delivery aliquot and store at -80°C. Avoid freeze / thaw cycles.
	pH: 8.00
	Constituents: 0.31% Glutathione, 0.79% Tris HCl

### General Info

## General info

<b>Function</b>	Binding to cells via a high affinity receptor, laminin is thought to mediate the attachment, migration and organization of cells into tissues during embryonic development by interacting with other extracellular matrix components. Ladsin exerts cell-scattering activity toward a wide variety of cells, including epithelial, endothelial, and fibroblastic cells.
<b>Tissue specificity</b>	The large variant is expressed only in specific epithelial cells of embryonic and neonatal tissues. In 17-week old embryo the small variant is found in cerebral cortex, lung, and distal tubes of kidney, but not in epithelia except for distal tubuli.
<b>Involvement in disease</b>	Defects in LAMC2 are a cause of epidermolysis bullosa junctional Herlitz type (H-JEB) [MIM:226700]; also known as junctional epidermolysis bullosa Herlitz-Pearson type. JEB defines a group of blistering skin diseases characterized by tissue separation which occurs within the dermo-epidermal basement membrane. H-JEB is a severe, infantile and lethal form. Death occurs usually within the first six months of life. Occasionally, children survive to teens. H-JEB is marked by bullous lesions at birth and extensive denudation of skin and mucous membranes that may be hemorrhagic.
<b>Sequence similarities</b>	Contains 8 laminin EGF-like domains. Contains 1 laminin IV type A domain.
<b>Domain</b>	The alpha-helical domains I and II are thought to interact with other laminin chains to form a coiled coil structure. Domain IV is globular.
<b>Cellular localization</b>	Secreted > extracellular space > extracellular matrix > basement membrane. Major component.

## Images



ab158812 on a 12.5% SDS-PAGE stained with Coomassie Blue.

SDS-PAGE - Recombinant Human LAMC2 protein  
(ab158812)

**Please note:** All products are "FOR RESEARCH USE ONLY. NOT FOR USE IN DIAGNOSTIC PROCEDURES"

## Our Abpromise to you: Quality guaranteed and expert technical support

- Replacement or refund for products not performing as stated on the datasheet
- Valid for 12 months from date of delivery
- Response to your inquiry within 24 hours
- We provide support in Chinese, English, French, German, Japanese and Spanish

- Extensive multi-media technical resources to help you
- We investigate all quality concerns to ensure our products perform to the highest standards

If the product does not perform as described on this datasheet, we will offer a refund or replacement. For full details of the Abpromise, please visit <https://www.abcam.com/abpromise> or contact our technical team.

### **Terms and conditions**

---

- Guarantee only valid for products bought direct from Abcam or one of our authorized distributors