

Product datasheet

Recombinant Human Langerin protein (denatured)
ab202625

1 Image

Description

| | | |
|----------------------------------------|----------------------------------------------------------------------------------------------------------------------------------------------------------------------------------------------------------------------------------------------------------------------------------------------------------------------------------------------------|--|
| Product name | Recombinant Human Langerin protein (denatured) | |
| Purity | > 85 % SDS-PAGE. ab202625 was purified by conventional chromatography techniques. | |
| Expression system | Escherichia coli | |
| Accession | Q9UJ71 | |
| Protein length | Protein fragment | |
| Animal free | No | |
| Nature | Recombinant | |
| Species | Human | |
| Sequence | MGSSHHHHHH SSGLVPRGSH MGSPRFMGTI SDVKTNVQLL KGRVDNISTL DSEIKKNSDG MEAAGVQIQM VNESLGYVRS QFLKLTSTVE KANAQIQILT RSWEEVSTLN AQIPELKSDL EKASALNTKI RALQGSLENM SKLLKRQNDI LQVVSQGWKY FKGNFYFSL IPKTWYSAEQ FCVSRNSHLT SVTSESEQEF LYKTAGGLIY WIGLTKAGME GDWSWVDDTP FNKVQSARFW IPGEPNNAGN NEHCGNIKAP SLQAWNDAPC DKTFLEICKR PYPVSEP | |
| Predicted molecular weight | 32 kDa including tags | |
| Amino acids | 65 to 328 | |
| Tags | His tag N-Terminus | |
| Additional sequence information | NP_056532. | |
| Description | Recombinant Human Langerin protein | |

Specifications

Our [Abpromise guarantee](#) covers the use of **ab202625** in the following tested applications.

The application notes include recommended starting dilutions; optimal dilutions/concentrations should be determined by the end user.

Applications SDS-PAGE

Form Liquid

Preparation and Storage

Stability and Storage

Shipped at 4°C. Store at +4°C short term (1-2 weeks). Upon delivery aliquot. Store at -20°C or -80°C. Avoid freeze / thaw cycle.

pH: 8.00

Constituents: 10% Glycerol (glycerin, glycerine), 0.24% Tris buffer

General Info

Function

Calcium-dependent lectin displaying mannose-binding specificity. Induces the formation of Birbeck granules (BGs); is a potent regulator of membrane superimposition and zippering. Binds to sulfated as well as mannosylated glycans, keratan sulfate (KS) and beta-glucans. Facilitates uptake of antigens and is involved in the routing and/or processing of antigen for presentation to T cells. Major receptor on primary Langerhans cells for *Candida* species, *Saccharomyces* species, and *Malassezia furfur*. Protects against human immunodeficiency virus-1 (HIV-1) infection. Binds to high-mannose structures present on the envelope glycoprotein which is followed by subsequent targeting of the virus to the Birbeck granules leading to its rapid degradation.

Tissue specificity

Exclusively expressed by Langerhans cells. Expressed in astrocytoma and malignant ependymoma, but not in normal brain tissues.

Involvement in disease

Defects in CD207 are the cause of Birbeck granule deficiency (BIRGD) [MIM:613393]. It is a condition characterized by the absence of Birbeck granules in epidermal Langerhans cells. Despite the lack of Birbeck granules Langerhans cells are present in normal numbers and have normal morphologic characteristics and antigen-presenting capacity.

Sequence similarities

Contains 1 C-type lectin domain.

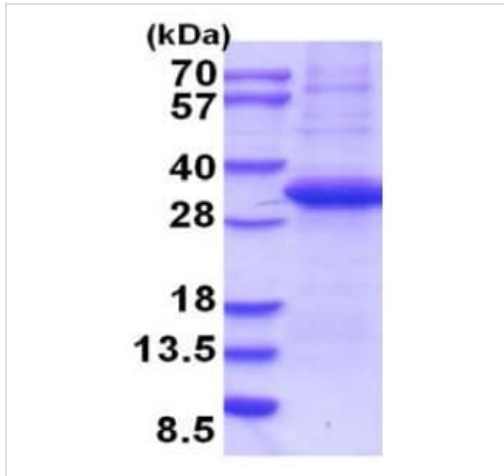
Domain

The C-type lectin domain mediates dual recognition of both sulfated and mannosylated glycans.

Cellular localization

Membrane. Found in Birbeck granules (BGs), which are organelles consisting of superimposed and zippered membranes.

Images



15% SDS-PAGE analysis of ab202625 (3µg).

SDS-PAGE - Recombinant Human Langerin protein
(denatured) (ab202625)

Please note: All products are "FOR RESEARCH USE ONLY. NOT FOR USE IN DIAGNOSTIC PROCEDURES"

Our Abpromise to you: Quality guaranteed and expert technical support

- Replacement or refund for products not performing as stated on the datasheet
- Valid for 12 months from date of delivery
- Response to your inquiry within 24 hours
- We provide support in Chinese, English, French, German, Japanese and Spanish
- Extensive multi-media technical resources to help you
- We investigate all quality concerns to ensure our products perform to the highest standards

If the product does not perform as described on this datasheet, we will offer a refund or replacement. For full details of the Abpromise, please visit <https://www.abcam.com/abpromise> or contact our technical team.

Terms and conditions

- Guarantee only valid for products bought direct from Abcam or one of our authorized distributors