

Product datasheet

Recombinant Human LAS1L protein ab164379

1 Image

Overview

<b>Product name</b>	Recombinant Human LAS1L protein
<b>Protein length</b>	Full length protein

Description

<b>Nature</b>	Recombinant
<b>Source</b>	Wheat germ
<b>Amino Acid Sequence</b>	
<b>Species</b>	Human

<b>Sequence</b>	<p>MSWESGAGPGLGSQGMDLVWSAWYGKCVKKGKSL          PLSAHGIVVAWLSRAE          WDQVTVYLFCDHKLQRYALNRITVWRSRSGNELPLA          VASTADLIRCKLL          DVTGGLGTDELRLLYGMALVRFVNLISERKTKFAKVPL          KCLAQEVNIPDW          MDLRHELTHKKMPHINDCRRGCYFVLDWLQKTYWCR          QLENSLRETWELE          EFREGIEEEDQEEDKNVVDDITEQKPEPQDDGKSTES          DVKADGDSKGSE          EVDSHCKKALSHKELYERARELLVSYEEEQFTVLEKF          RYLPKAIKAWNNP          SPRVECVAELKGVTCENREAVLDAFLDDGFLVPTFE          QLAALQIEYEDGQ          TEVQRGEGTDPKSHKNVDLNDVLPKPFSSQFWQPLL          RGLHSQNFTQALLE          RMLSELPALGISGIRPTYILRWTVELIVANTKTGRNARRF          SAGQWEARRG          WRLFNCASLDWPRMVESCLGSPCWASPQLLRIFKA          MGQGLPDEEQEKL          LRICSYTQSGENSLVQEGSEASPIGKSPYTLDSLWYSV          KPASSSFGSEA          KAQQQEEQGSVNDVKEEKEEKEEVLDPQVEEEEEEN          DDQEEEEDEDEDDED          EEEDRMEVGPFFSTGQESPTAENARLLAQKRGALQGS          AWQVSSSEVVRWDTF</p>
-----------------	---

PLGRMPGQTEDPAELMLENYDTMYLLDQPVLEQRLEP  
STCKTDTLGLSCG  
VGSGNCSNSSSSNFEGLLWSQGQLHGLKTGLQLF

**Amino acids** 1 to 734  
**Tags** proprietary tag N-Terminus

### Specifications

---

Our [Abpromise guarantee](#) covers the use of **ab164379** in the following tested applications.

The application notes include recommended starting dilutions; optimal dilutions/concentrations should be determined by the end user.

**Applications** ELISA  
Western blot

**Form** Liquid

**Additional notes** Protein concentration is above or equal to 0.05 mg/ml.

### Preparation and Storage

---

**Stability and Storage** Shipped on dry ice. Upon delivery aliquot and store at -80°C. Avoid freeze / thaw cycles.  
pH: 8.00  
Constituents: 0.31% Glutathione, 0.79% Tris HCl

### General Info

---

**Function** Involved in the biogenesis of the 60S ribosomal subunit. Required for maturation of the 28S rRNA. Functions as a component of the Five Friends of Methylated CHTOP (5FMC) complex; the 5FMC complex is recruited to ZNF148 by methylated CHTOP, leading to desumoylation of ZNF148 and subsequent transactivation of ZNF148 target genes.

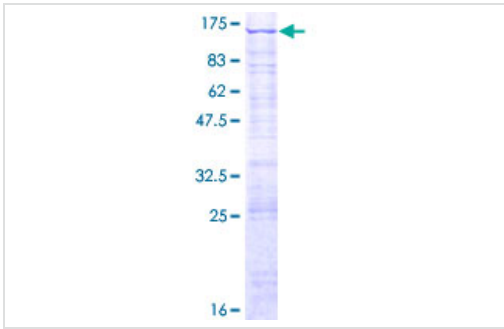
**Sequence similarities** Belongs to the LAS1 family.

**Cellular localization** Nucleus > nucleolus. Nucleus > nucleoplasm. Cytoplasm. Mainly found in the nucleoplasm, with low levels detected in the cytoplasmic and chromatin fractions (By similarity). Localizes mainly to the granular component, the region implicated in the later steps of rRNA processing and subunit assembly and export.

---

### Images

---



ab164379 on a 12.5% SDS-PAGE stained with Coomassie Blue.

SDS-PAGE - Recombinant Human LAS1L protein  
(ab164379)

**Please note:** All products are "FOR RESEARCH USE ONLY AND ARE NOT INTENDED FOR DIAGNOSTIC OR THERAPEUTIC USE"

### Our Abpromise to you: Quality guaranteed and expert technical support

---

- Replacement or refund for products not performing as stated on the datasheet
- Valid for 12 months from date of delivery
- Response to your inquiry within 24 hours
- We provide support in Chinese, English, French, German, Japanese and Spanish
- Extensive multi-media technical resources to help you
- We investigate all quality concerns to ensure our products perform to the highest standards

If the product does not perform as described on this datasheet, we will offer a refund or replacement. For full details of the Abpromise, please visit <https://www.abcam.com/abpromise> or contact our technical team.

### Terms and conditions

---

- Guarantee only valid for products bought direct from Abcam or one of our authorized distributors