

Product datasheet

Recombinant Human LAT protein ab113124

1 Image

Description

Product name	Recombinant Human LAT protein
Purity	> 95 % SDS-PAGE. ab113124 was purified using conventional chromatography.
Expression system	Escherichia coli
Accession	O43561-2
Protein length	Protein fragment
Animal free	No
Nature	Recombinant
Species	Human
Sequence	<p>MGSSHHHHHSSGLVPRGSHMHCHRLPGSYDSTSSDS LYPRGIQFKRPHT VAPWPPAYPPVTSYPPLSQPDLLPIPRSPQPLGGSHRTPS SRRDSDGANS VASYENEEPACEDADEDEDDYHNPGYLVLPDSTPATST AAPAPALSTP GIRDSAFSMESIDDYVNPESGESAEASLDGSREYVNVS QELHPGAAKTE PAALSSQEAEVEEEEGAPDYENLQELN</p>
Predicted molecular weight	24 kDa including tags
Amino acids	28 to 233
Tags	His tag N-Terminus

Specifications

Our [Abpromise guarantee](#) covers the use of **ab113124** in the following tested applications.

The application notes include recommended starting dilutions; optimal dilutions/concentrations should be determined by the end user.

Applications	SDS-PAGE Mass Spectrometry
Mass spectrometry	MALDI-TOF
Form	Liquid

Preparation and Storage

Stability and Storage

Shipped at 4°C. Store at +4°C short term (1-2 weeks). Upon delivery aliquot. Store at -20°C or -80°C. Avoid freeze / thaw cycle.

pH: 8.00

Constituents: 0.02% DTT, 0.32% Tris HCl

General Info**Function**

Required for TCR (T-cell antigen receptor)- and pre-TCR-mediated signaling, both in mature T-cells and during their development. Involved in FCGR3 (low affinity immunoglobulin gamma Fc region receptor III)-mediated signaling in natural killer cells and FCER1 (high affinity immunoglobulin epsilon receptor)-mediated signaling in mast cells. Couples activation of these receptors and their associated kinases with distal intracellular events such as mobilization of intracellular calcium stores, PKC activation, MAPK activation or cytoskeletal reorganization through the recruitment of PLCG1, GRB2, GRAP2, and other signaling molecules.

Tissue specificity

Expressed in thymus, T-cells, NK cells, mast cells and, at lower levels, in spleen. Present in T-cells but not B-cells (at protein level).

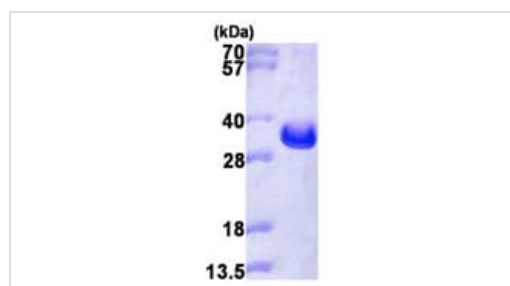
Post-translational modifications

Phosphorylated on tyrosines by ZAP-70 upon TCR activation, or by SYK upon other immunoreceptor activation; which leads to the recruitment of multiple signaling molecules. Is one of the most prominently tyrosine-phosphorylated proteins detected following TCR engagement. May be dephosphorylated by PTPRJ.

Palmitoylation of Cys-26 and Cys-29 is required for raft targeting and efficient phosphorylation.

Cellular localization

Cell membrane. Present in lipid rafts.

Images

15% SDS-PAGE analysis of ab113124 (3 µg).

Molecular weight on SDS-PAGE will appear higher.

SDS-PAGE - Recombinant Human LAT protein
(ab113124)

Please note: All products are "FOR RESEARCH USE ONLY. NOT FOR USE IN DIAGNOSTIC PROCEDURES"

Our Abpromise to you: Quality guaranteed and expert technical support

- Replacement or refund for products not performing as stated on the datasheet
- Valid for 12 months from date of delivery
- Response to your inquiry within 24 hours

- We provide support in Chinese, English, French, German, Japanese and Spanish
- Extensive multi-media technical resources to help you
- We investigate all quality concerns to ensure our products perform to the highest standards

If the product does not perform as described on this datasheet, we will offer a refund or replacement. For full details of the Abpromise, please visit <https://www.abcam.com/abpromise> or contact our technical team.

Terms and conditions

- Guarantee only valid for products bought direct from Abcam or one of our authorized distributors