

Product datasheet

Recombinant Human LC3B protein ab103506

1 Image

Description

<b>Product name</b>	Recombinant Human LC3B protein	
<b>Purity</b>	> 95 % SDS-PAGE.	
<b>Expression system</b>	Escherichia coli	
<b>Accession</b>	<a href="#">Q9GZQ8</a>	
<b>Protein length</b>	Full length protein	
<b>Animal free</b>	No	
<b>Nature</b>	Recombinant	
<b>Species</b>	Human	
<b>Sequence</b>	MGSSHHHHHH SSGLVPRGSH MPSEKTFKQR RTFEQRVEDV RLIREQHPTK IPVIIERYKGEKQLPVLDKT KFLVPDHVNM SELIKIIRRR LQLNANQAFF LLVNGHSMVS VSTPISEVYE SEKDEDGFLY MVIYASQETFG	
<b>Predicted molecular weight</b>	16 kDa	
<b>Amino acids</b>	1 to 140	
<b>Tags</b>	His tag N-Terminus	

Specifications

Our [Abpromise guarantee](#) covers the use of **ab103506** in the following tested applications. The application notes include recommended starting dilutions; optimal dilutions/concentrations should be determined by the end user.

<b>Applications</b>	SDS-PAGE
	Mass Spectrometry
<b>Mass spectrometry</b>	MALDI-TOF
<b>Form</b>	Liquid

Preparation and Storage

<b>Stability and Storage</b>	Shipped at 4°C. Upon delivery aliquot and store at -20°C or -80°C. Avoid repeated freeze / thaw cycles. pH: 8.00
------------------------------	---

Constituents: 0.0154% DTT, 0.316% Tris HCl, 20% Glycerol (glycerin, glycerine), 0.58% Sodium chloride

## General Info

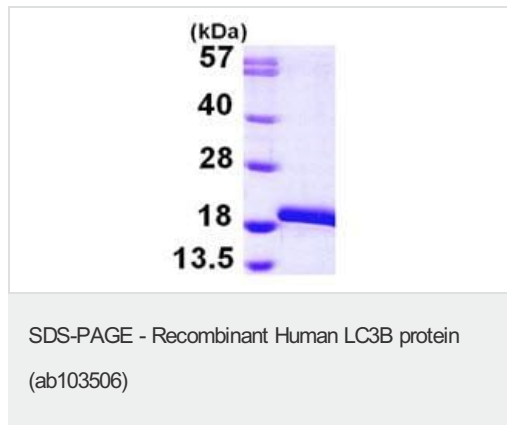
---

<b>Function</b>	Probably involved in formation of autophagosomal vacuoles (autophagosomes).
<b>Tissue specificity</b>	Most abundant in heart, brain, skeletal muscle and testis. Little expression observed in liver.
<b>Sequence similarities</b>	Belongs to the MAP1 LC3 family.
<b>Post-translational modifications</b>	The precursor molecule is cleaved by APG4B/ATG4B to form LC3-I. This is activated by APG7L/ATG7, transferred to ATG3 and conjugated to phospholipid to form LC3-II.
<b>Cellular localization</b>	Cytoplasm > cytoskeleton. Endomembrane system. Cytoplasmic vesicle > autophagosome membrane. LC3-II binds to the autophagic membranes.

---

## Images

---



15% SDS PAGE analysis of ab103506 (3 µg).

**Please note:** All products are "FOR RESEARCH USE ONLY. NOT FOR USE IN DIAGNOSTIC PROCEDURES"

## Our Abpromise to you: Quality guaranteed and expert technical support

---

- Replacement or refund for products not performing as stated on the datasheet
- Valid for 12 months from date of delivery
- Response to your inquiry within 24 hours
- We provide support in Chinese, English, French, German, Japanese and Spanish
- Extensive multi-media technical resources to help you
- We investigate all quality concerns to ensure our products perform to the highest standards

If the product does not perform as described on this datasheet, we will offer a refund or replacement. For full details of the Abpromise, please visit <https://www.abcam.com/abpromise> or contact our technical team.

## Terms and conditions

---

- Guarantee only valid for products bought direct from Abcam or one of our authorized distributors